

*The*

# Reeve's Tale

*Aug/Sept 2010*



VILLAGE MAGAZINE  
FOR BAWDESWELL & FOXLEY

**Reeve's Tale**  
**Magazine**  
*Aug/Sept 2010*



**TUESDAY & FRIDAY  
 MORNINGS  
 9am - Noon  
 in  
 BAWDESWELL CHURCH**

POSTAL SERVICES  
 PENSIONS  
 CAR TAX  
 BILL PAYMENTS  
 BANKING  
 ETC

Sorry **Not open**  
 on the following dates:-

Tue 3&10, Fri 6&13 Aug  
 Tue 26, Fri 22 Oct

**COPY FOR THE OCTOBER ISSUE**  
**BY 15<sup>th</sup>SEPTEMBER PLEASE**

e-mail : [magazine@bawdeswell.net](mailto:magazine@bawdeswell.net)

**CONTENTS**

NOTICE BOARD	page 2
EVENTS DIARY	page 3
FOXLEY SUMMER SHOW	page 4
BRECKLAND THEATRE FESTIVAL	page 5
FILM CLUB	page 6
BAWDESWELL ACTIVITIES GROUP	page 8
FOXLEY VILLAGE HALL EVENTS	page 11
BAWDESWELL CLUBS	page 12
CROMER TRIP	page 13
FRIENDS OF BAWDESWELL CHURCH	page 15
FOXLEY PARISH COUNCIL	page 17
BAWDESWELL PARISH COUNCIL	page 18
BAWDESWELL VILLAGE HALL	page 21
LITTLE MONKEYS	page 23
Big C COFFEE MORNING	page 25
CHARITY BALL	page 27
BOOK CLUB, also WI	page 29
CHURCHES CYCLE RIDE	page 31
BENEFICE NEWS	page 32
CHURCHES	page 34
RECTOR WRITES	page 35
CHURCH SERVICES	page 36

## NOTICE BOARD

### **BAWDESWELL FETE**

Our annual village fete on Sunday 27th June was - in anybody's opinion - a great success! There were more people than previous years, enjoying the best weather and helped us raise over £1,000. This will be split equally between 6 village groups (PreSchool, Friends of School, Village Hall, Friends of Church, PCC and BAG). The very long awaited opening of the play area, was the highlight of the day... children of all ages and adults were keen to test everything out - there wasn't an inch of the area untouched! Photos are online at <http://eoe.xarg.co.uk/projectbawdeswell/files/>

Thanks so very much to all those involved in the fete; it really wouldn't be as successful without you. Thanks also to all those who helped plant, weed and tidy the play area so that it looked its very best for the fete.

Now that we have the most fantastic play space in the world.... lets keep it that way. PLEASE ensure that ALL your litter is picked up and put in any one of the 5 bins - especially cans - as when the grass is mowed the cans end up in small jagged pieces - perfect for cutting dogs paws or children's legs. Please also ensure the lid is put back on the sand pit when you have finished playing with it... otherwise the leaves, rain.... cats... will make it unpleasant for your next visit.

**BAWDESWELL POST OFFICE** will be **Closed** the 1<sup>st</sup> week in August.  
A *new* Computer System is now in place and hopefully will prove more reliable.

### **THE ELMHAM PATIENT PARTICIPATION GROUP**

**IN CONJUNCTION WITH  
THE ELMHAM SURGERY**

**will be holding**

**AN OPEN EVENING**

**To which all members of the public are invited**

**On**

**THURSDAY, 14<sup>TH</sup> OCTOBER 2010**

**at**

**ELMHAM SCHOOL at 7 p.m.**

**More details in next month's magazine**

## AUGUST & SEPTEMBER DIARY

<b>August</b>	
Sun 1 <sup>st</sup>	Summer Show at Foxley Village Hall 2pm
Tue 3 <sup>rd</sup>	Breckland Theatre Festival 6pm Bawdeswell Village Hall
Thu 5 <sup>th</sup>	Book Club meets in the Old Workhouse Bar 7.30pm
Sun 8 <sup>th</sup>	Badgers adults Sponsored Walk
Mon 9 <sup>th</sup>	Table Tennis at Bawdeswell Village hall, <i>See page 8</i> Beck WI meet at Sparham Old Schoolroom 7.30pm
Thu 12 <sup>th</sup>	Craft Group 2pm Bawdeswell Village Hall
Fri 13 <sup>th</sup>	Julian Group at 8pm Barwick House, Bawdeswell
Sat 14 <sup>th</sup>	Bawdeswell Film club 7pm
Mon 16 <sup>th</sup>	Bawdeswell Village Hall Committee meeting 7.30pm
Sat 21 <sup>st</sup>	Summer Lunch at Foxley Village Hall 12 for 12.30pm
Mon 23 <sup>rd</sup>	Table Tennis at Bawdeswell Village hall, <i>See page 8</i>
Tue 24 <sup>th</sup>	Archdeacon's visitation starts
Wed 25 <sup>th</sup>	Coffee Morning 10.30am Foxley Village Hall
Thu 26 <sup>th</sup>	Mobile Police Station in Bawdeswell 11am Craft Group 2pm Bawdeswell Village Hall
Fri 27 <sup>th</sup>	Julian Group at 8pm Barwick House, Bawdeswell
Sat 28 <sup>th</sup>	Project Bawdeswell Meeting
Sun 29 <sup>th</sup>	Bring & Share Lunch at Bawdeswell Village hall
<b>September</b>	
Thu 2 <sup>nd</sup>	Book Club meets in the Old Workhouse Bar 7.30pm
Fri 3 <sup>rd</sup>	Sparham Flower Festival all weekend
Mon 6 <sup>th</sup>	Bawdeswell Parish Council Meeting
Thu 9 <sup>th</sup>	Craft Group 2pm Bawdeswell Village Hall
Fri 10 <sup>th</sup>	Julian Group at 8pm Barwick House, Bawdeswell
Sat 11 <sup>th</sup>	Charity Ball in aid of Cancer Research UK <i>see page 27</i> Norfolk Churches Trust Sponsored Cycle Ride 9-5pm
Wed 15 <sup>th</sup>	Big C Coffee Morning at Foxley Village Hall 10.30am
Sat 18 <sup>th</sup>	Bawdeswell Film club 7pm
Wed 22 <sup>nd</sup>	Bawdeswell Ladies Club garden Coffee Morning 10.30am
Thu 23 <sup>rd</sup>	Mobile Police Station in Bawdeswell 11am Craft Group 2pm Bawdeswell Village Hall
Fri 24 <sup>th</sup>	Julian Group at 8pm Barwick House, Bawdeswell
Sat 25 <sup>th</sup>	Project Bawdeswell Meeting
Sun 26 <sup>th</sup>	Foxley Harvest Festival 10.30 St Thomas Church Bawdeswell Men's Race For Life, <i>see page 9</i>

There is a full programme of Events at Bawdeswell Village hall in August not listed above. *See page 8 for details.*

**Bridge Club** *please see page 12 for meetings.*

**Regular Weekly Events : Bawdeswell** *see page 21*

**Foxley** *see page 4*

## **SUMMER SHOW at Foxley Village Hall**

**Sun 1 Aug - 2pm** (Entries to Hall 11am to 12noon )

Post completed Entry Forms into VH Post Box  
by 5pm on Sat 31 July

**Classes for: Foliage & Flowers, Vegetables,  
Photography, Cookery, Crafts and Children**

1<sup>st</sup>, 2<sup>nd</sup>, 3<sup>rd</sup> Rosettes for winners

Judges: Mr Brian Miners & Mrs Jennifer Abram

**REFRESHMENTS & RAFFLE**

## **SUMMER LUNCH at Foxley Village Hall**

*Delicious Homemade Food*

**Sat 21 Aug 12 for 12.30pm**

Raffle & Licensed Bar

**Tickets: £5. 00 per person**

*Please reserve tickets ASAP*

**Contact:** Ruth Whitmore 01362-688768

**Email:** [ruthwhitmore@onetel.net](mailto:ruthwhitmore@onetel.net)

**Foxley Village Hall.....**Exercise Classes every Tuesday morning at 9.30am.....  
Short Mat Bowls Every Monday & Friday Evening.....

## Breckland Theatre Festival



One of the nation's best-loved comedy actors will appear at the finale of Breckland's first-ever Rural Theatre Festival at **Swanton Morley** village hall.

Roger Lloyd Pack, familiar to millions as Trigger in the classic sitcom *Only Fools and Horses*, is the patron of the three-week event, which will bring professional productions into the heart of village communities.

Roger will perform in the Wonderful Beast theatre company's production of "Yes - the Adrian Mitchell Show", a cabaret homage to his late friend and renowned poet, on August 14<sup>th</sup>.

The festival, organised by Breckland Council in partnership with Creative Arts East's Village Stage project, runs from July 24 and will present four high-quality shows in seven venues throughout the district, one of which will be **Bawdeswell**.

**Tuesday 3rd August - 6pm at Bawdeswell Village Hall  
(Doors Open 5.30pm)**

### *Liang and the Magic Paint Brush*

*An inventive blend of puppets, origami,  
live painting and video images bring this  
well loved Chinese tale to life.*

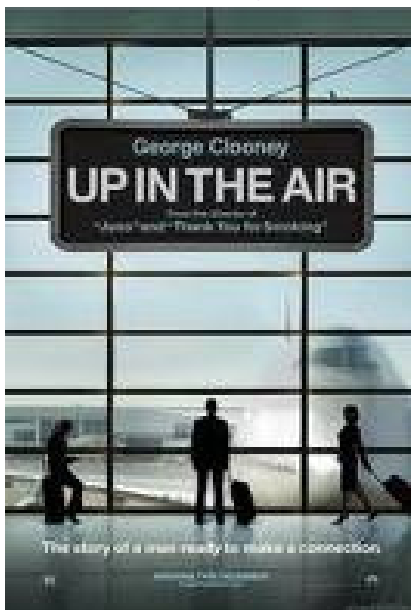


*Tickets £4 adult, £2 children, under 5's free – buffet tea included*  
Call 01362 688749 to book or email [BawdeswellBAG@aol.com](mailto:BawdeswellBAG@aol.com)

**Pre booked tickets only**



## Up in the Air



Ryan Bingham (George Clooney) describes himself as a “termination facilitator”. When corporations need to downsize quickly but hate the mess, he flies in and breaks the news to the new former employees. He lives out of a suitcase, racks up the frequent flyer miles (his ambition is to reach 10 million), and has an intermittent relationship with businesswoman Alex Goran (Vera Farmiga) who shares his no-strings attitude. He loves every minute. He doesn't want a home. He doesn't want a family. He gives self-help lectures on how and why to unpack the backpack of your life. But his lifestyle is threatened when his company hires ambitious young Natalie Keener (Anna Kendrick). She argues that firing people by video-conference would save a lot of money on airfares. The more Ryan fights to keep what he's got, however, the more he starts to wonder if it's worth fighting for at all.

## Saturday 14th August

At Bawdeswell Village Hall from 7.00pm (film starts 7.30pm)

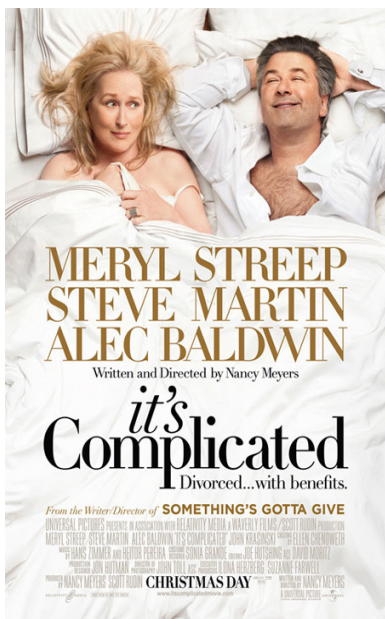
**BOOK TICKETS IN ADVANCE - Limited Audience - Call 01362 688749**

£3.50 adults, £2.50 U18 (15 £ over)

The Bar/Cafe will be open from 7.00 to 10.00pm for refreshments



# It's Complicated



Jane Adler (Golden Globe nominee Meryl Streep) is the mother of three grown kids, owns a thriving Santa Barbara bakery/restaurant and has - after a decade of divorce - an amicable relationship with her ex-husband, attorney Jake (Alec Baldwin). But when Jane and Jake find themselves out of town for their son's college graduation, things start to get complicated. An innocent meal together leads to several bottles of wine, which in turn becomes a laugh-filled evening of memories about their 19-year marriage... and then to an impulsive affair. With Jake remarried to the much younger Agness (Lake Bell), Jane is now, of all things, the other woman. Caught in the middle of this renewed romance is Adam (Steve Martin), an architect hired to remodel Jane's kitchen. Also divorced, Adam starts to fall for Jane, but soon realizes he's become part of an unusual love triangle. Should Jane and Jake move on with their separate lives, or has the passage of time made them realize that they really are better together than apart? It's...complicated.

## Saturday 18th September

At Bawdeswell Village Hall from 7.00pm (film starts 7.30pm)

BOOK TICKETS IN ADVANCE - Limited Audience - Call 01362  
688749

£3.50 adults, £2.50 U18 (15 & over)

The Bar/Cafe will be open from 7.00 to 10.00pm for refreshments





## Summer At The Hall

Please see below for Summer dates which (including materials) will be **FREE** of charge (except 3rd August), although donations towards the costs will be welcomed. These activities at Bawdeswell Village Hall are open to all residents of Bawdeswell, Foxley and surrounding villages. As usual the 'CAFE' will be open every afternoon for hot & cold drinks, sweets & crisps etc. **from 1 – 4 pm.**

We accept children aged 9 years and over with parental consent (written consent on our specific form - available at the hall or in advance contact 688749 - is required). Children under 9 **MUST** be accompanied at all times by a responsible adult (18 plus). Attendance of unaccompanied children is of course subject to their good behaviour.

**PLEASE NOTE :** If any parent has concerns about the interaction between their child and another they must speak to one of the volunteers rather than speaking to the other child involved.

## Summer Program - 1pm – 4pm **The Hall will be open for activities on the following dates:**

Monday 2 <sup>nd</sup> August	Water Sports
<b>Tuesday 3<sup>rd</sup> August 5.30 pm</b>	<b>Breckland Theatre Festival (see separate details)</b>
Wednesday 4 <sup>th</sup> August	Puppetry
Monday 9 <sup>th</sup> August	Outdoor or Indoor Games/Sports (weather dependent)
Wednesday 11 <sup>th</sup> August	Printing, screen, stamps & stencils
Friday 13 <sup>th</sup> August	Activity will be chosen on the day at the hall
Monday 16 <sup>th</sup> August	Stupid Sock Creatures (Bring odd socks)
Wednesday 18 <sup>th</sup> August	Paper craft, paper folding, Quilling & tissue flowers
Thursday 19 <sup>th</sup> August	Outdoor or Indoor Games/Sports (weather dependent)
Monday 23 <sup>rd</sup> August	Wacky Races Day
Wednesday 25 <sup>th</sup> August	Dyeing, Tie Dye & Batik
Friday 27 <sup>th</sup> August	Popcorn Plus – details at hall

## **Table Tennis – fun evenings - Mondays 9<sup>th</sup> & 23<sup>rd</sup> August, 13<sup>th</sup> & 27<sup>th</sup> September**

It doesn't matter how well you play - come along and have some fun or just come along to socialise. Other games available and the BAG café will be open for refreshments. Cost - **£1.50 adult or 75p under 18** towards the hire of the hall. Further information from Janet on 688749.

## **BAWDESWELL FILM CLUB**

BAG is running the monthly film shows but there is an opportunity to create a Film Club to show your own DVD's under a Public Video Screening Licence.

If you would like to join or help with this club please contact David on 688749.



**Running club** - When we started a year ago in May, Debbie had just run the London Marathon. That first night, we ran/walked to Floranova and back (from the village hall) and that was enough! Some of us were used to running on the treadmill and were unsure about running 'outside' some of us hadn't done ANYTHING!!! Fast forward to about August last year and we had the running bug... we entered the City of Norwich Half Marathon in November... and most importantly; we finished! If you were like we were a year ago... come join us. We are a very friendly bunch and ANY ability is welcomed. The conversation is ALWAYS varied and NEVER dull!

Thursdays 6pm at Bawdeswell Village Hall (If you are a member of Weight Watchers, you even have time for your weigh in before we start!) Only £1 – towards the new hall fund. More details from Debbie 688098

**Men's race for Life** – Sunday 26<sup>th</sup> September 2010. Start and finish at Bawdeswell Village Hall, 5K through the residential roads of the village. Any age, any size, and ability... you just have to be male. Food and refreshments available – raising funds for the EVERYMAN charity – dedicated to funding research into prostate and testicular cancer. More details nearer the time... but plenty of female stewards/helpers/supporters needed. Keep Your Eye On The Ball... and this page!

**Play area** - By the time you read this the new Play Area will be officially open and we hope that everyone is enjoying it. Please help to keep it as a proud asset for the village, by ensuring that any dog fouling is cleared up, any litter is put in the bins provided and that no smoking or drinking is done in the area... remember... it is a play area for CHILDREN.

Many, many thanks to everyone who has helped or been involved in this mammoth project.

**This project would not have evolved without the tremendous effort and hard work put in by Fel Roberts. She has worked very, very hard at this for many months and to raise so much money is a tremendous achievement. Thank you again Fel! D.C.**

## **ROC AT THE REC**

What a great and successful event. Thank you to everyone who helped and everyone who attended this years roc at the rec.

With 260 people coming to the event we doubled last years attendance. A great night was had by all adults and children alike, who listened to the great sounds of Tendahooks supported by Attention to Detail. Final profits are yet to be confirmed but by the next Reeve's Tale we will be able to report the final figure and what the money will be used for in the village.

The date for next years Roc at the Rec is to be confirmed but will be Mid July.

Again thank you for all your support, without the helpers at this event we will not be able to run it. If you wish to become a helper and have some input for next years event please contact Wendy 01362 688602, Kelsey 01362 688401 or Fel 01362 688876

We aim to make next year 'Roc at the Rec' even better.

## **Moor Farm Stable Cottages**

Moor Farm, Foxley, Dereham, Norfolk, NR20 4QP

**Tel: (01362) 688523** (24hr answerphone)  
688393 (evenings)

*A Courtyard of 8  
2/3 Bedroomed Converted Stables  
together with Individual Cottages.*

***All fully equipped and Centrally heated.***

Long or Short Term Lets

**OPEN ALL YEAR**

Visit our Website: [www.moorfarmstablecottages.co.uk](http://www.moorfarmstablecottages.co.uk)

## **DAVIS EGG SALES**

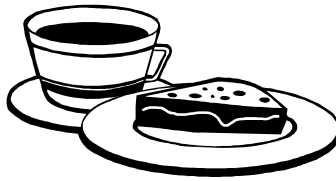
MOOR FARM, FOXLEY, DEREHAM, NORFOLK, NR20 4QN

**Tel: (01362) 688523**



***Your Local Egg Supplier***

Pre-packs - Keyes Trays  
Shrink wrapped - Free Range



***FOXLEY VILLAGE HALL***

**COFFEE MORNING**

**Wed 25 August at 10.30am**

**SOMETHING TASTY, MARDLE & RAFFLE**

*All Welcome*

**CHILDREN'S HARVEST PARTY**

**Sun 3<sup>rd</sup> Oct 2010 2 – 4pm**

**HARVEST THEME FANCY DRESS**

**GAMES & TEA**

*Entry: £2 per child*

**CONTACT: Ruth Whitmore**  
**01362-688768**  
**Email: [ruthwhitmore@onetel.net](mailto:ruthwhitmore@onetel.net)**



## BRIDGE CLUB

The JayCee Bridge Club is Spreading It's Wings!

Established in early 2009, we are building on the success of the Club by inaugurating weekly sessions at Foxley Village Hall. These will be on Tuesdays at 7.15p.m. for a 7.30p.m. start. We are continuing sessions at the Bawdeswell Village Hall on alternate Fridays (2.15p.m. for a 2.30p.m. start). From September we plan to increase these sessions to every week. If you think you'd like to join us, please do come along - we only request £2.00 per session to cover expenses. Beginners are welcome, either having recently learned or even if only to see what bridge is all about!

For information (or to confirm a session is to take place) contact Roger Fryatt on 01362 688627

Current Schedule: Tuesdays 3<sup>rd</sup>, 10<sup>th</sup>, 17<sup>th</sup>, 24<sup>th</sup> & 31<sup>st</sup> August  
(Foxley) 7<sup>th</sup>, 14<sup>th</sup>, 21<sup>st</sup> & 28<sup>th</sup> September  
Fridays 6<sup>th</sup> & 20<sup>th</sup> August  
(Bawdeswell) 3<sup>rd</sup>, 10<sup>th</sup>, 17<sup>th</sup> & 24<sup>th</sup> September



## BAWDESWELL BOWLS CLUB.

Bawdeswell Bowls Club have an excellent venue situated behind the Village Hall. We play in two leagues - the Cawston Triples League and Dereham and District League. Foulsham and Bintree Bowls clubs also use Bawdeswell's green. New players are always welcome.

For further information please contact Paul Digby on (01362) 688615

## BAWDESWELL FOOTBALL CLUB.

The club plays in the 3<sup>rd</sup> division of the Crown Fire Central and South Norfolk League. Home games are played at Bawdeswell Recreation Ground. For more information about the club please contact Philip Duffield on (01362) 688611. For information about matches see <http://www.csnleague.co.uk/index.html>.



## BAWDESWELL ALLOTMENT & LEISURE GARDENERS ASSOCIATION



The association is lobbying the Parish Council to provide allotments for the village. If you would like to join or would like more information contact Jayne Bown on 01362 688388 or see our website at <http://eoe.xarg.co.uk/balga/>

## BAWDESWELL CRAFT GROUP

Our twice a month meetings continue to be good fun and members' work is progressing really well. One member has been dressing dolls and we have all enjoyed seeing them in progress and the beautiful finished articles. You may have been lucky enough to see them at the Swanton Morley Tractor Rally and at the Village Fete. Also, members have knitted over 50 wool squares that will be included in the *Big Woolie* to be hung from the balcony of City Hall on the last weekend in July. The *Woolie* is to be made up of at least 1,000 squares in rainbow colours. Once the festivities are over the *Woolie* is being broken up into blankets for charities. If anyone has spare oddments of wool we would be grateful for them for the charity knitting we do. We continue to meet in Bawdeswell village hall on the 2nd and 4th Thursday afternoons of the month at 2.00 until 4.30 pm and new members are always welcome. The next dates are 12th and 26th August and 9th and 23rd September.

*Enquiries: Marietta Menzies 01362 688 400*

\*\*\*\*

## CROMER PIER CHRISTMAS SEASIDE SPECIAL

*Are you interested in a coach trip to Cromer for the  
Christmas Seaside Special with possibly supper included?*

*If you like this idea please  
call Alan Collier on 01362 688017*

### **BAWDESWELL LADIES CLUB Garden Coffee Morning**

**Wednesday 22<sup>nd</sup> September from 10.30 am**

Subject to weather! - this month's coffee morning will be in Janet's garden. No charge but donations to a charity are always welcome. At the end of this year, all donations will be sent to Dr. Barnado's.

Please let Janet know if you can join her.  
Call 688749 or e-mail [janetcockburn@aol.com](mailto:janetcockburn@aol.com)



Our service includes

**Conservatory Cleaning  
Driveway, Cleaning  
Patio & Pathway Cleaning**

and much more

Call 01328 829832



Lilwall's Farm Pork  
**HOG ROASTS**

*for your function*

**50 - 500 people**

Ring for a quotation  
**(01362) 688098 07867 987787**  
*Farm Reared British Pigs*

TELEPHONE BAWDESWELL 688211

**J.A. BAKER**  
*FAMILY BUTCHER*  
BAWDESWELL, Norfolk

ORDERS TAKEN FOR ALL DEEP-FREEZE MEATS

# ABILITY

## Driver Training

*Lessons or intensive courses  
Very competitive rates  
High first time pass rate*

**Call 01603 870276**  
**Call or text 07754685159**  
[www.abilitydrivertraining.co.uk](http://www.abilitydrivertraining.co.uk)



*Nicky P.*  
*Hair Design*  
*Freelance Hairdresser*

*10 years experience*  
*covering all aspects of hairdressing*  
For Appointments tel: 07799298020



**Vaughan Lapwood ADI**

*Patient and Friendly  
Driving Tuition*

*Tel: 01362 690049*  
*Mobile 07831 102311*

*Josephine Tym*  
MCSP  
Chartered Physiotherapist

Registered member of the  
Health Professional Council

**Tel: (01362) Bawdeswell 688281**

**For assessment and treatment  
at home or in treatment room**

Jordans  
Jordan Green  
Whitwell  
Norwich  
NR10 4RQ

*J*  
Physio  
First



**The Friends of Bawdeswell Church**  
 'protecting & enhancing this unique building for the future'

July 3<sup>rd</sup> *Coffee Morning and 100 Club Draw*

£100 Mary Goodman

£25 I Berning M Proctor-Smith

Sam Gurney Peter Lilwall

£10 Angela Shannon Bob Morgan J Parker

Jane Loudon Larry Condon

***Forthcoming events for 2010***

Oct 2<sup>nd</sup> *Coffee Morning and Draw*

October 1<sup>st</sup> Flower demonstration by Christal Dyball, with lunch,  
 in the church 10.30am

October 30<sup>th</sup> Harvest Supper with Keith Loades, Village Hall

7.00pm

Dec 11<sup>th</sup> Christmas Wreaths etc for Sale in the church 10 - 4

Dec 12<sup>th</sup> Christmas Concert 4pm

**Flower demonstration**

*by Christal Dyball*

October 1<sup>st</sup> in the church 10.30am

**with lunch**

*Details from Sue Lilwall 01362 688240*



## Bawdeswell Garage & MOT Centre

MOT's Class IV & Class VII

MOT's for Motorcycles Class I & II

### **Repairs and Servicing for all makes and models of Vehicles**

Free Local Collection & Delivery of Vehicle - Recovery of Vehicles

State of the art Diagnostic Equipment

Fully Qualified Technicians

Friendly & Knowledgeable Staff - Quality Workmanship Assured

Health & HPI Check for Used Vehicles prior to purchase £50 + VAT

**Mon - Fri : 8am - 6pm Sat : 8am - 12pm**

**Park Farm Buildings Dereham Road  
Bawdeswell**

**Dereham NR20 4AA**

**Tel: 01362 688731 Fax : 01362 688943**

[www.bawdeswellgarage.co.uk](http://www.bawdeswellgarage.co.uk)

### For all your Home & Garden Maintenance contact

*J. D. Home & Garden Services*

*Professional & Reliable Workmanship*

- ❖ *Garden Fencing Supplied & Erected*
- ❖ *Patio & Paving Laid*
- ❖ *Sheds Supplied & Erected*
- ❖ *Replacement External Doors & Windows*
- ❖ *Conservatories Supplied & Erected*
- ❖ *Floor and Wall Tiling*
- ❖ *All forms of Domestic Carpentry*

**No Job Too Small – Free Estimates**

**Call Jason Dobbs on 01362 – 688824 or 07780 – 988628 (mobile)**

**Email: [jdobbs@tiscali.co.uk](mailto:jdobbs@tiscali.co.uk)**



## REEPHAM HOME HARDWARE

3 TOWNSEND CORNER, REEPHAM, NORWICH

Tel. 01603 871064

Paint Tinting Mixing System • CALOR GAS Stockists • Hardware  
Full Gardening Range • Pet Food • Timber • Electrical • Tools  
Shingle • Cycle Parts • Houseware



**Mon - Sat 9 - 5 DEEP CLEAN CARPET CLEANER FOR HIRE LOCAL DELIVERIES Sun 10 - 12.30**

**FOXLEY PARISH COUNCIL-EXTRACT OF MINUTES HELD ON  
13TH JULY 2010, IN THE VILLAGE HALL.**

**Present:** Councillors Harvey (Chairman), Mears (Vice-Chairman), Barrett, Hatch, Mansfield, E Buck (clerk) and 4 parishioners.

**Apologies** Mr B Borrett (County Councillor), Mr G Bambridge (District Councillor)

**Declarations of interest** - None

**Appointment of New Clerk.** Mrs E Buck was appointed as new clerk and a warm welcome was given by all. The Chairman confirmed that a contract had been drawn up. And all had read the contract. DB proposed and was seconded by JM that it be signed.

Deep gratitude was expressed to Claire for working with us for the past two years, and that she was much appreciated for all her good and hard work. We all wish her the very best for the future.

**Matters Arising Not Covered Elsewhere on Agenda**

**Anglian Water Sewerage Pumping Station** The Vice-Chairman reported that a different team had been appointed to fix a defective drain. Finding the problem had been difficult. There was flooding outside Lawrence Place. Yet again the Chairman suggested that there was a need to keep an eye on the situation, and to remain vigilant.

**Highways** There was still concern about the road passing Mr Davis's farm. It was deemed as diabolical and everyone was in disbelief that nothing had been done about the situation. Clerk to contact Highways.

**Correspondence** Breckland Local Development Framework

The Chairman confirmed that Foxley has kept it's boundaries and that we are not for anymore development as we have no facilities to cope.

**Planning**

3PL/2010/0407/F Mrs J Cargill-Manor Farm. approved

3PL/2010/0305/F Mr G Hoptrough Longacre. approved

3TL/2010/0015/TL Mr A Hunt.The Natterjack. approved

**Finance** a. Summary of accounts- The financial report was present and signed.

b. Precept 2010/2011. The following payment was agreed cheque for 500.00 pounds. Foxley Village Hall Committee.

**Village Matters**

a. Concerns were raised about a storage container on front lawn of Longacre as to whether planning permission was required.

The Parish Council felt that no further action was needed at this time.

b. The Phantom Bottle Dropper has returned. A large number of wine bottles were being left on the verge along Old Fakenham Road.

Clerk will contact Serco and Gordon Bambridge who may be able to help to address the situation.

**Date of Next Paish Meeting is Thursday 7th October.**

Contact Details for the Parish Clerk - Emma Buck

tel: 01362688299/07771654277 E-mail: foxleyemma@aol.com

**BAWDESWELL PARISH COUNCIL**  
**DIGEST OF THE PARISH COUNCIL MEETING HELD ON 11 MAY 2010**

**Present:** Councillors Shannon, Mason, Beane, Lilwall, Kirby, Green, Mrs C Boer and 2 parishioners.

**Ongoing Issues from Previous Meetings**

**Adams Pit:** The Trustees are now obtaining competitive quotes from contractors to meet Mr Stocker's (Norfolk County Council Ecologist) plan for the next stage of refurbishment work at Adams Pit. This excavation work should start in August. The Trustees would like to take this opportunity to thank Ian Nichols and Brenda Beane for giving up time during the last few months to water the newly-planted hedging on the southern side of the Pit. The Trustees recognize that without Ian and Brenda's help the new hedge would not have survived the recent dry weather.

**Allotments:** The Chairman and Clerk are still waiting to meet with the second local landowner to discuss possible land for allotments.

**Planning**

**PA 3PL/2010/0560/F:** Bawdeswell Badgers Pre-School, provision of additional classroom space in form of second mobile with link to existing mobile; the Parish Council had no objections to this application.

**PA 3PL/2010/0394/F:** Cobb Breeding Co Ltd, proposed extension to hatchery building for the storage of equipment related to the hatchery; planning permission granted.

**PA 3PL/2010/0341/F:** Cobb Breeding Co Ltd, redevelopment of existing broiler breeder unit, demo of 11 sheds & erection of 6 new with associated feed bins etc; planning permission granted.

**PA 3PL/2010/0402/F:** Bawdeswell Village Hall, temporary portable building to be used as meeting room, changing rooms and storage; planning permission granted.

**Any Other Business of Interest to Parishioners**

**Bus Shelter Repairs:** The Parish Council has been successful in its recent grant application. Norfolk County Council has now agreed to award a 100% grant for the total cost quoted for the require repairs to the bus shelter, which should commence within the next couple of weeks.

**Recycling Provisions for the Village:** Following advice provided by Breckland District Council, the Parish Council has decided to remove the paper bank situated near the Village Hall; usage of this bank has diminished due to parishioners putting their waste newspapers/magazines in their black wheelie bins and is no longer cost-effective. However, the Parish Council was keen to replace this paper bank with another form of recycling that could generate financial benefit for the community in the same way that glass recycling provides. Accordingly, a textiles bank, which can raise some £240.00 per tonne of waste, will replace the current paper bank. However, the Parish Council are keen not to undercut BAG, which already undertakes a door-to-door textiles recycling service; therefore, the Parish Council has decided that all monies generated from the new textile bank will be donated to BAG. Parishioners are encouraged to support this valuable service to the community by using either service for their waste textiles. The Clerk is also continuing to investigate other means of recycling which might also benefit the community

**Drainage & Surfacing Scheme:** Norfolk County Council has made a Temporary Traffic Order affecting B1145 Reepham Road from Bawdeswell Bridge south westwards for 350 metres to a point outside Westbury, because of drainage and carriageway patching works. The road will be temporary closed (except for access) from 27<sup>th</sup> July

2010 to 27<sup>th</sup> August 2010 for the duration of the works, expected to be about 5 weeks within the period.

EDP Pride in Norfolk Awards 2010: The Bawdeswell's entry into the EDP Pride in Norfolk Awards was short-listed for a visit by the judging team for the 'Under 1000 population' Award. This visit was made in June and it seemed that the judges were very impressed with what goes on in the village of Bawdeswell. We should hear how well we have done in the very near future; so keep your fingers crossed!

**Date of next meeting is: Monday 6<sup>th</sup> September 2010**

Contact Details for the Parish Clerk - Claire Boer

Tel: 01362 688415/07877955745 Email: cboer.pariahclerk@fsmail.net

\*\*\*

### **B1145 Road Closure 26<sup>th</sup> July for 5 weeks**

The B1145 Reepham Road will be closed, except for access, between the junction with 'The Street' Bawdeswell and the junction with Jordan Lane.

*Perhaps the easiest diversion route from Bawdeswell to Reepham is as follows:-*

Take the A1067 towards Norwich until you pass the turning for Lyng on the right. Take the 1<sup>st</sup> turning on the left after this into 'Grove Lane' then ahead into 'Nowhere Lane'. Follow the lane until it becomes 'Whitwell Road' and passes Reepham High School before reaching the junction with the B1145 at Reepham.

### **B1067 Road Works July/August/September/October**

There will be a long period of disruption on the A1067 Norwich to Fakenham road during two major road maintenance schemes. The work beginning on Monday 19 July will repair and resurface the A1067 Drayton High Road at **Hellesdon**. The work will last for seven weeks. From 19 July to 15 August the road will be closed to outbound traffic heading away from Norwich. From 16 August to 27 August the road will be closed to all traffic in both directions. The road will be back to normal when the schools go back on 6 September.

Work will start at **Lenwade/Great Witchingham** on Monday 20 September and last for about three weeks. The road will have to be closed for most of the work.

The signposted diversion routes will be **VERY LONG** (via Norwich ring road, the A47 to Swaffham and the A1065 to Fakenham) as the roads have to be to the same standard as the one closed so you might want to use your local knowledge to find a shorter route. D.C.

### **MOBILE POLICE OFFICE**

THE MOBILE POLICE OFFICE WILL BE IN 'THE STREET' BAWDESWELL FROM 11AM UNTIL 12.30PM EVERY 4TH THURSDAY. THIS IS INTENDED TO PROVIDE A 'VISIBLE' POLICE PRESENCE IN THE VILLAGE. PLEASE MAKE SURE THAT YOU VISIT THEM IF YOU HAVE A PROBLEM OR NEED INFORMATION. POP IN AND FIND OUT WHAT'S HAPPENING IN THE AREA.

**Dates for the rest of 2010 are**  
**29<sup>th</sup> July, 26<sup>th</sup> August, 23<sup>rd</sup> September, 21<sup>st</sup> October,**  
**18<sup>th</sup> November & 16<sup>th</sup> December**

## RAVENCROFT TREE SERVICES LTD



For the preservation and management  
of trees.

All aspects of tree work undertaken,  
with free quotations.

Tree consultancy services provided

Contact Richard Ravencroft Tel: 01362 684291

[www.ravencrofttrees.co.uk](http://www.ravencrofttrees.co.uk)

### ANNE WEITZ

GTCL LTCL Dip Ed (Lond)

Member ISM-EPTA-BKA

Tuition in Piano, Theory,  
Sight Singing; Musicianship  
ABRSM and TCM exams  
Beginners to Advanced

All ages welcome

**01362 688466**

### Bryan Ellum FRCO GRSM

LRAM ARCM Member ISM

Tuition in organ  
and piano

All levels – Adults welcome

Accompanist for Exams etc.

40yrs experience

N. Elmham **01362 668156**



Your local contact  
Charlie Reeve

Save money on gas, electric,  
broadband, phones  
and mobiles

**Free Quotes**

Tel: 01362 688210 Mobile: 07951 889917

FREEPHONE **0808 108 1002**

Email: [charliereeve@telecomplus.org.uk](mailto:charliereeve@telecomplus.org.uk)

Website: [www.telecomplus.org.uk/charliereeve](http://www.telecomplus.org.uk/charliereeve)

### WANTED

Do you have old or rotten trees, perhaps  
wind fallen or broken ones, I will cut and  
remove free of charge, anything  
considered.

Call D J Taylor: 07981 792790 evenings  
or weekends.

### G.A.EGMORE & PARTNERS

of Sparham

**Coal, Smokeless fuels,  
Pre-packed & Barbecue fuels**

Also parts for Solid Fuel Fires

Regular Deliveries 6 days a week in  
all areas. Quality, Service, Reliability.

PHONE 01362 688270



## Bawdeswell Village Hall

Bawdeswell Village hall can be hired by parishioners and non residents. You can also hire tables and chairs for your own events. Regular activities at the hall include Table tennis on the 2<sup>nd</sup> and 4<sup>th</sup> Monday of each month, Young Farmers on Tuesdays, Countryside Rangers every other Wednesday, Weight Watchers on Thursday evenings and Pilates on Friday evenings. The Parent & Toddler group meet on Friday mornings 9.30 to 11.30. Seekers meet on the 1<sup>st</sup> Saturday morning each month. Also there are regular table tennis evenings and a bridge for fun club.



### Hire Charges are unchanged for 2010

Period	(1) Standard Hire Charge	(2) Parishioners other than in (3)	(3) Parishioners - Hires ending by 5pm on Weekdays #
Minimum (2 hrs)	£16	£15	<b>£10</b>
4 Hours	£30	£25	<b>£15</b>
6 Hours	£45	£35	<b>£25</b>
8 Hours	£50	£40	<b>£30</b>
10 Hours	£60	£45	n/a
12 Hours	£70	£50	n/a
Full Day	£85	£60	n/a

# Excludes Bank & Public Holidays. Other hours charged pro rata.

When the hall is not otherwise in use on weekdays, Bawdeswell village voluntary groups may use the hall free of charge.

We now have a licence for the sale of alcohol and hirers can take advantage of this for a fee of £15 subject to approval by the Village Hall Committee.

Planning permission has now been granted for a portable building for use as a meeting room etc next to the hall. This should be available from the Autumn and it is proposed that the hire charge will be half that for the main hall.

**For availability, more details and a booking form please contact the booking clerk:- David Cockburn, Tel: (01362) 688749, Mobile: 07778 835 254,**

**Email: [BawdeswellVH@aol.com](mailto:BawdeswellVH@aol.com)**

**See our website at – <http://eoe.xarg.co.uk/bawdeswellvillagehall/>**

The next Village Hall Committee Meeting will be held on Monday 16<sup>th</sup> August 2010 - 7.30 pm at the Hall

If you would like to help run the hall, come along to the meeting.

### Regular Weekly Events

Young Farmers	Tuesdays
Countrysiders	Every other Wednesday
WeightWatchers	Thursdays
Parents & Toddlers	Fridays 9.30am
Pilates	Fridays
Runners	Thursdays 6.30pm
Basketball	Thursdays 5pm
Seekers	1 <sup>st</sup> Saturday

# AQUAFIX

PLUMBING & HEATING SERVICES

*From dripping Showers & Taps.....*

*....To fitting Bathroom Suites & Kitchens*

*Floor & Wall Tiling, Water Softeners, Power Flushing*

*For a Professional & Competitive Home Improvement Service*

**Call Frank at - AQUAFIX on 01362 688880**

**or 07877 427344**

philip jacobs

Oil Fired Boiler Servicing  
Repair & Breakdowns.

*Friendly reliable local service*

**01362 688398**  
mobile **07887 902815**

## **Carpet supply/fitting**

*All types of carpet & vinyl supplied and fitted. Choose at home from a vast range, floor screeds, underlays, gripper etc.*

*Please call*

*Jeremy Tyler*

**01328 829098,07834 401362**

**Altro safety flooring**

**Hygiene and wet room flooring**



## INDOOR HEATED SWIMMING POOL & SPA

MOOR FARM FOXLEY

*Available for hire for your private use. Tel: 01362 688523*

Purdys  Solicitors

Tel: 01603 870606  
Fax: 01603 871332  
email: [mail@purdysreepham.co.uk](mailto:mail@purdysreepham.co.uk)

The Market Place  
Reepham  
Norwich Norfolk NR104LZ

PERSONAL, INDEPENDENT EXPERTISE

- Sales, • Purchases and Leases of Residential, Commercial and Agricultural Property
  - Wills • Probate and Powers of Attorney • Licensing
- Evening and Saturday appointments by prior appointment



## Bawdeswell Little Monkeys



### New Parent & Toddler/Baby Group

We meet at Bawdeswell Village Hall from 9.30am to 11.30am every Friday in term time. Come along for a chat and a coffee & let your little ones have some fun. £1.50 first child and 50p per additional child - includes tea/coffee and juice and snack.

For more information call Karen on (01362) 688939 or Jo on 688088

**\*\*\*Launch Party Friday 13<sup>th</sup> September\*\*\***

**Come and see the new baby play area and new toys.  
Face painting, party games and lots of fun!!**

## PROJECT BAWDESWELL



After the tremendous success of the new play area, we are now looking to focus all energies on developing the Village Hall and its surroundings. The Steering Group met at the end of June to consider the substantive draft report that has been prepared by one of the sub-groups on extending the Village Hall. At our next meeting any amendments will be considered and incorporated and then the proposal will be presented to the Parish Council. The next stage will be to appoint professional advisors and to seek grants and start fund raising!

Next meetings are Saturdays 28<sup>th</sup> August and 25<sup>th</sup> September 10am at Bawdeswell Village Hall. For further information see our website at <http://eoe.xarg.co.uk/projectbawdeswell/>



### SOOTS

A MEMBER OF THE INSTITUTE OF  
CHIMNEY SWEEPS

### JOHN WADEY

CHIMNEY SWEEP

BRECKLANDS, HONINGHAM ROAD  
WESTON LONGVILLE,  
NR9 5JU.

TEL;01603 880519

MOBILE;07776 472425

brecks@tiscali.co.uk

[www.chimneysweepnorwich.co.uk](http://www.chimneysweepnorwich.co.uk)



01362 688997

www.rcd-electrical.co.uk

# RCD Electrical

01603 743373

info@rcd-electrical.co.uk

## Your Local Electrical Service

RCD Electrical are proud to offer customers fast and friendly service coupled with expert knowledge.

Our service is flexible and customised to meet your needs so whatever your requirements contact us for advice, further information or a free, no obligation quotation.

Electrical installation  
and maintenance

Additional sockets



Internal and  
external lighting

Electric showers &  
smoke detectors

### 24 hour emergency call out

Open Every Day

## Kerri's Farmhouse Pine

Quality Range of Gifts & Accessories  
Hand waxed Furniture  
Old Style Tea Shop

**Reepham Station**  
**01603 871187**  
Traffic Free Cycle Hire

**Locally based accountancy and  
tax service**



Self-Assessment Tax Returns  
Annual Accounts  
Book Keeping  
VAT Returns

Committed to providing a prompt professional service at a sensible price. For a free initial consultation at a time to suit you contact

David Pooley ACIB

Tel/Fax **01603 866542** Mobile **0790 508 6960**

e-mail: davidpooley@certax.co.uk

## Charles Seaman

Interior/Exterior Painter and  
Decorator

**Tel: (01362) 688309**

2 Bell Close, Bawdeswell, Dereham,  
NR20 4SL

## MARK HIGH

### GENERAL BUILDER

*Tel*                      *Mobile*

01362  
668896

07796  
061501



## BIG "C" COFFEE MORNING

**FOXLEY VILLAGE HALL**

**WED 15 Sept at 10.30am**

This year, three ladies either, living in or, closely associated with Foxley, are being treated for breast cancer at the Norwich & Norwich Hospital. They would all like our usual September Coffee Morning Fund Riser to be held in aid of the above charity.

The Committee will play a big part in making this successful by: raising money before 15<sup>th</sup> September, supplying refreshments and running a raffle. However, help is needed from residents and friends who would like to organise and, be responsible for, a Tombola table; a homemade cake table; a bric-a-brac table: and "we are open to suggestions for any other type of table"!!!

**PLEASE HELP US SUPPORT THESE LADIES ON THEIR ROAD TO RECOVERY  
BY RAISING A BIG SUM FROM A LITTLE VILLAGE**

**CONTACT:** Ruth Whitmore 01362-688768      **Email:** ruthwhitmore@onetel.net

## WATER COLOUR FOR BEGINNERS!

Learn the mysteries of WATER COLOUR.

New courses starting at CAWSTON and SHERINGHAM.

Or join a general ART CLASS, learn to draw and use a variety of media. Small friendly groups, and expert technical help, for the experienced or not, or for the confident or not!

The new term starts during the week beginning September 27th. and there are day time classes at CAWSTON, AYLSHAM, HINDOLVESTON, HEMPTON and SHERINGHAM.



IT'S GOOD FUN, RING ME FOR DETAILS,  
CLEMENTINA SUTTON 01603 872441.

**Lyn Walker** DipCFHP MPSPract

**Qualified foot health Practitioner**

*Treatment in the comfort of your own home*

Nail cutting, removal corns, calluses,  
in-growing toenails, fungal infection.

**Tel 01328 700140 Mobile 07788440327**



**Gentle, effective therapies**

Sue Whiting, M.A.R. I.E.B.Tera-Mai™ Assoc. M.I.HSA

**Tel: 01362 688664 (Bawdeswell)**

**Reflexology - Aromatherapy - Reiki**

Experienced & Registered Practitioner

Also:- \*Reiki training and attunements

\*Workshops (meditation - aromatherapy- baby reflex- skincare)

\*Handmade natural skincare range

\*Gift Vouchers & Gift Packs



Remind your  
body how it should feel

- **Aromatherapy**
- **Massage**
- **Hot Stone Therapy**
- **Indian Head Massage**

To book an appointment at  
Dragonfly Therapy Room OR in  
the comfort of your own home call

**Bawdeswell (01362) 688746**

**Mobile 07786 628309**

Carmen Taylor CThA

Holistic Massage  
Therapist

## Reflexology

in the comfort of your own home

Enjoy the benefits of this soothing  
holistic therapy from an experienced,  
qualified professional.

**Specialist in maternity reflexology**

relax **reduce stress** calming  
**well-being** clears imbalances **soothing**  
harmonise **aids healing** boost energy levels



love your feet  
reflexology



**Tracy-ann Moore MAR**

**t: 01362 688069 m: 07747 382079**

**Helen Mears** MCFHP MAFHP

Qualified Foot Health

Practitioner

Phone 01362 688251

Registered member of the  
British Association of Foot Health  
Professionals  
Professional Foot Care Treatment  
and

Pain Relief for a range of  
Common Foot Disorders

Old Hall Farm Barn  
The Street, Foxley



In aid of

**CANCER RESEARCH UK**



Join us for a fabulous evening in aid of  
Cancer Research UK

## **LATE SUMMER CHARITY BALL**

**Dress code: black tie**

**Saturday 11th September 2010**  
**18.30 arrival - til late**

**Weston Park Golf Club,  
Lenwade,  
Norwich,  
Norfolk**

**Three course meal with coffee and mints**  
**Entertainment by soul band - the 45's**  
**Raffle**  
**Fun and games**

**£40 per ticket**  
**or**  
**full table of 10 - £380**

*Entertainment only tickets also available at £10 each (9pm onwards)*

**Web - [www.norfolkcharityball.co.uk](http://www.norfolkcharityball.co.uk)**  
**Email - [becky@norfolkcharityball.co.uk](mailto:becky@norfolkcharityball.co.uk)**  
**Tel - 0800 756 6717**

*Together we will beat cancer*



..... G P LANDSCAPING  
BAWDESWELL

(Fencing Specialists - Commercial, Domestic and Industrial)

The best quality fencing that lasts the longest!

Also undertaking all hard landscaping; paths, patios,  
driveways, turf and brickwork.

Locally based (Bawdeswell), fully insured, portfolio on request,  
free quotations.

Contact : 07971 771204 / 01362 688159



G A Bishop



**Oil, gas & lpg servicing and maintenance**

*Most appliances covered*

Landlord certificates

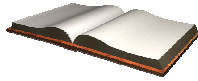
Aga and Rayburn servicing

*Experienced and insured*

Gas Safe and Oftec registered

**Tel: 01362 688999**

Mobile: 07507850320



## Bawdeswell Book Club

For discussion at the July meeting we read *The Secret Agent* by Joseph Conrad. The novel is set in London where Mr. Verloc runs a seedy shop in Soho.

He is also a Secret Agent working for the police and operating for an underground anarchist cell. When he is instructed to plant a bomb in Greenwich Observatory his actions have tragic repercussions for him and his family.

Most members at the meeting found the book less than captivating but when finished it allowed the reader to appreciate his ironic view of human affairs and interaction.

*Janet Sprason*

The Book Club meets in the Workhouse Bar on the first Thursday of every month at 7.30pm. New members are always welcome.

For discussion at the August meeting the members are reading *The Road* by Cormac McCarthy, and *I Know where the Cage Bird Sings* by Alice Walker for discussion at the September meeting.



## Beck W. I.

Welcoming everyone to our July meeting – our speaker Bill Richmond, members and most welcome guests – Aleathia told us Bill would start the evening’s entertainment, his subject being Stage Make-up and Special Effects. And entertaining the evening certainly was!

Bill described how his interest in stage make-up began in the 1960s when at a holiday camp, a group of enthusiasts started an amateur theatre group. It was amazing how many talents were discovered among the holidaymakers. One was an excellent carpenter, others were artists, decorators, electricians etc and Bill went for the stage make-up job.

He explained and then demonstrated how to use base make-up, then grease paint or water base and coloured paints. He had two volunteer models; first Susanne who was quickly transformed into a much older lady with different features and colouring, the disguise being completed with a grey wig and a shawl. Then it was Tilly’s turn. With emphatic arched eyebrows and bright red paint delicately rubbed on her cheeks and painted on her mouth, she soon took on the appearance of an attractive geisha girl. After our tea/coffee break, our representative, Barbara, gave an interesting account of the National AGM held in Cardiff on 2<sup>nd</sup>/3<sup>rd</sup> June.

The exhibition was won by Jennifer. Margaret S. second. Margaret also won the raffle.

*Next month, on Monday 9<sup>th</sup> August, Aliceon Blair talks to us on Nutritional Research and the exhibit is a home grown vegetable.*

*Mary Humphrey*



## SPARHAM FLOWER FESTIVAL

With a Weddings Theme

***St Mary the Virgin Church Sparham –  
3rd, 4th & 5th September***

Starts with a Champagne reception on Friday 3<sup>rd</sup> September at 6.30 p.m..  
The event is open to everyone and tickets are £15 per person and available from Fiona Sayer on 01603 872246.

The Festival will be open on Saturday 4<sup>th</sup> and Sunday 5<sup>th</sup> from 10am – 6pm each day. Homemade refreshments will be available in The Old School Room. Homemade cakes and preserves will also be on sale and hampers filled with goodies will be raffled.

The festival will conclude on Sunday evening at 6.30pm with Evensong. We are delighted that The Archdeacon of Lynn, the Venerable John Ashe has kindly agreed to conduct this service. The singing of familiar hymns will be accompanied by members of the Icenii Choir. Everyone is most welcome.



Fresh Local Produce now on sale  
at Bawdeswell Garden Centre



Supported by **Eastern Daily Press**

**How to have fun  
and raise money for your  
favourite Church or Chapel  
*join the*  
**SPONSORED CYCLE RIDE**  
**Saturday 11th September 2010**  
**9.00 am – 5.00 pm****

Cycle or walk around Norfolk Churches  
to raise money for the Church or  
Chapel of your choice and for the  
**NORFOLK CHURCHES TRUST**

Sponsorship money raised will be divided  
equally between Norfolk Churches Trust  
and the Church or Chapel  
of any denomination  
chosen by the cyclist, walker, or  
church recorder

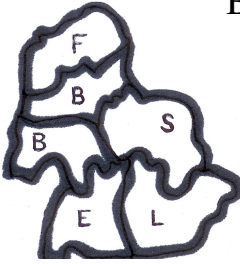
**Sponsorship Forms available from  
Local Organiser**

Robin Taylor  
Tel: 688268

Monica Hatch  
Tel: 688316



## Benefice News and Events



### Events for August

15<sup>th</sup> Lyng Church Barbecue lunch at the Rectory  
12.30pm

24/25<sup>th</sup> Archdeacon's Visitation

29<sup>th</sup> Eucharist Service with the Archdeacon at  
Bawdeswell followed by a bring and share lunch in  
Bawdeswell village hall at 12.30

We agreed in the churchwardens' meeting to have lay people leading the Intercessions at the Holy Communion Order 1 services. A short two session course will be held at the Rectory in October to help people plan their prayers and how to deliver them.

If anyone would like to think about being part of the prayer leaders group please contact your churchwarden who will pass on your name to the Rector.

Foxley John Harvey 01362 688650, Tony Rushbrook 01362 688494  
Lyng Carole Bringham 01603 872275, Edwin Speakman 01603 872522  
Elsing Fran Neale 01362 637782, Rod Collis 01362 638192  
Bawdeswell Robin Taylor 01362 688268, William Mason 01362 688338  
Bylaugh Oliver Diggle 01362 638225  
Sparham Michael Sayer 01603 872268

### Moving the Contemplative Heart to Action

Sept 17/18 2 day workshop St Luke's Church, 61 Aylsham Road

Led by John Bell from the Iona Community  
Exploring the relationship between Contemplative Prayer and Compassion.  
Cost £70, concessions £40  
Please book in advance to Revd Nicholas Vesey, 01603 416973 or  
[Nicholas.vesey@bopenworld.com](mailto:Nicholas.vesey@bopenworld.com)

If you would like to attend and need a lift, Fran Neale is going and can be contacted on 01362 637782

## Events for September

4/5 Sparham Flower Festival

4<sup>th</sup> *Bach to Boogie* concert in Elsing Church 7.30pm

5<sup>th</sup> Sparham Harvest Festival 6.30pm

11<sup>th</sup> Norfolk Churches Trust Sponsored Cycle Ride

15<sup>th</sup> Lyng Church Coffee Morning 3 Hill Paddocks 10.30am

## Baptism

The Rector writes:

‘I really welcome children being brought to be baptised, or christened, as it is also called. There have been many baptisms in all our six churches since I have been here.

One thing that surprises some people is the requirement – across all churches, not just these – that godparents should themselves have been baptised. Normally, I say that it’s not logical (for those who haven’t been baptised) to make promises on someone else’s behalf that they haven’t made for themselves.

I’ve thought of another way of putting it. When you are baptised, you become a member of the church, however good or diligent a member you may or may not be. Most organisations will only accept the sponsorship of new members by those who are already members; and the church is the same.

And if you think: “that’s silly, I go to church more frequently and believe much more than some people who just turn up to be godparents; I behave much more like a member of the church, even though I’m not baptised”, please – don’t get angry, get baptised. You can do it at any age. Get in touch with me.’



A Julian Group meets twice a month in at Barwick House opposite the church in Bawdeswell, on the second and the last Fridays of the month.

Forthcoming meetings are on Friday 13<sup>th</sup> & Friday 27<sup>th</sup> August, Friday 10<sup>th</sup> & Friday 24<sup>th</sup> September, all at 8pm.

Contact Susan March for details – 01603 870342



## All Saint's Church, Bawdeswell

The Archdeacon will be visiting us on Tuesday 24<sup>th</sup> August and would like to see the Churchwardens at 2 o'clock followed by any local members of the Benefice Ministry Group at 3pm.

On Sunday 29<sup>th</sup> we will be hosting a Benefice Eucharist Service with the Archdeacon at Bawdeswell followed by a bring and share lunch in Bawdeswell village hall at 12.30 to which all are invited and will be very welcome.



## St Thomas Church, Foxley

The Archdeacon will be visiting us on Wednesday 25<sup>th</sup> August and would like to see the Churchwardens at 9 o'clock followed by any local members of the Benefice Ministry Group at 10am.

**SUNDAY 26<sup>th</sup> SEPTEMBER    Foxley Harvest Festival 10.30 St Thomas Church**

FOXLEY LYNG ELSING BAWDESWELL BYLAUGH SPARHAM

Bring & Share Lunch

12.30pm at Bawdeswell Village Hall

Sunday 29<sup>th</sup> August

*All Welcome*

## From the Rector

Dear Everybody, hello again.

Someone told me about a businessman who goes away on holiday a lot, but can't stop working. He takes a laptop and the latest communications phones and gizmos, and although he's wearing a Hawaiian shirt and the top of his head is getting sunburnt, he might as well be in his office.

Maybe he subscribes to the saying: "a change is as good as a rest", but it doesn't seem like much of a change to me.

I think that when we take holidays, a change of pace and activity is much more important than a change of scenery. The papers are full of ideas for those who are going to have a "staycation", a vacation where you stay at home. A staycation shouldn't be about finishing off all those DIY jobs; instead, you find something different to do, something out of the ordinary. You live at home with a holiday mind, and see your surroundings as if you were a visitor.

When I was in South London, a nearby church organised something called "home retreats". Usually Christians "go on retreat" by going away to a monastery or convent or other special place, and thinking about their spiritual life. But this scheme meant that people stayed at home, in a working week, while doing the same spiritual exercises. At the end of it, apparently, they felt it had been a special way to think of the whole of their lives in a spiritual way.

Similarly, you don't need to be actually off work to develop a "holiday mind". You just have to look at your world as if you were a foreigner, or were sending a postcard about where you were and describing it. Familiarity can mean that we stop noticing things.

This also works for those who are retired, and for students and anyone with very long holidays. We don't have to go anywhere to be attentive to all the things that surround us, and see them as precious. Imagine that you were taking photos for the next two weeks to show when your holiday was over. What would be on your camera?

God bless you this summer, David Head

**CHURCH SERVICES August/September 2010**

Date	01/08	08/08	15/08	18/08	22/08	29/08
Season	<i>Trinity 9</i>	<i>Trinity 10</i>	<i>Trinity 11</i>	<i>Wed</i>	<i>Trinity 12</i>	<i>Trinity 13</i>
<b>Foxley</b>	18.30 EP <b>DH</b>		8.00 HC(PB) <b>DH</b>		10.30 HC1 <b>DH</b>	
<b>Lyng</b>	9.00 HC2 <b>DH</b>		17.00 EP <b>DH</b>		10.30 FS <b>FST</b>	
<b>Elsing</b>	10.30 HC1 <b>TC</b>		9.00 HC1 <b>DH</b>		10.30 W&P <b>CW</b>	
<b>Bawdeswell</b>	10.30 HC1 <b>Peter McCrorry</b>		10.30 GiG <b>GiG team</b>	0900 HC(PB) <b>DH</b>	10.30 W&P <b>CW</b>	10.30 HC <b>John Ashe</b>
<b>Bylaugh</b>		9.00 HC PB <b>DH</b>			9.00 MP <b>CW</b>	
<b>Sparham</b>	10.30 Summer Club	10.30 OMS <b>DH</b>	10.30 HC(PB) <b>DH</b>		9.00 HC <b>DH</b>	

Date	05/09	12/09	19/09	22/09	26/09
Season	<i>Trinity 14</i>	<i>Trinity 15</i>	<i>Trinity 16</i>	<i>Wednesday</i>	<i>Trinity 17</i>
<b>Foxley</b>	18.30 EP <b>DH</b>	10.30 OMS <b>BMG</b>	8.00 HC PB <b>TC</b>		10.30 Harvest <b>DH</b>
<b>Lyng</b>	9.00 HC1 <b>DH</b>		17.00 EP <b>TC</b>		18.30 Harvest <b>DH</b>
<b>Elsing</b>	10.30 HC1 <b>TC</b>		9.00 HC1 <b>TC</b>		10.30 W&P <b>CW</b>
<b>Bawdeswell</b>	10.30 HC1 <b>DH</b>		10.30 <b>GiG Team</b>	0900 HC(PB) <b>?</b>	10.30 W&P <b>CW</b>
<b>Bylaugh</b>		9.00 HC PB <b>TC</b>			15.00 Harvest <b>DH</b>
<b>Sparham</b>	10.00 OASIS 18.30 Evensong <b>John Ashe</b>		10.30 HC PB <b>TC</b>		9.00 MP <b>DH</b>



# Programme for 2010

**Saturday 14<sup>th</sup> August**

Up in the Air (15)

\*\*\*\*\*

**Saturday 18<sup>th</sup> September**

It's Complicated (15)

\*\*\*\*\*

**Saturday 23<sup>rd</sup> October**

Robin Hood (12A)

\*\*\*\*\*

**Saturday 20<sup>th</sup> November**

Letters to Juliet (PG)

\*\*\*\*\*

**Saturday 11<sup>th</sup> December**

The Ghost [Writer] (15)

\*\*\*\*\*

All At Bawdeswell Village Hall from 7.00 pm  
- (films start approx. 7.30 pm)

BOOK TICKETS IN ADVANCE - Limited Audience  
- Call 01362 688749

£3.50 adults, £2.50 children U18,  
£10 Family (2A+2C plus £1.00 for every extra child)

The Bar/Cafe will be open from 7.00 to 10.30 pm. for  
refreshments

*From January 2011 film night will be fixed  
as the second Saturday of each Month*