

The

Reeve's Tale

June 2010



VILLAGE MAGAZINE
FOR BAWDESWELL & FOXLEY

Reeve's Tale Magazine June 2010

POST
OFFICE®

**TUESDAY & FRIDAY
MORNINGS
9am - Noon
in
BAWDESWELL CHURCH**

POSTAL SERVICES
PENSIONS
CAR TAX
BILL PAYMENTS
BANKING
ETC

Sorry **Not open**
on the following dates:-

Tue 3&10, Fri 6&13 Aug
Tue 26, Fri 22 Oct

**COPY FOR THE July ISSUE BY
15th June PLEASE**

e-mail : magazine@bawdeswell.net

CONTENTS

NOTICE BOARD	page 2
EVENTS DIARY	page 3
BAWDESWELL ACTIVITIES GROUP	page 4
BAWDESWELL VILLAGE HALL	page 8
BAWDESWELL CINEMA	page 10
BAWDESWELL CLUBS	page 11
SUMMER CLUB	page 12
SCHOOL	page 13
FOXLEY OPEN GARDENS	page 14
COFFEE MORNINGS	page 15
FOXLEY PARISH COUNCIL	page 16
BAWDESWELL PARISH COUNCIL	page 17
BAWDESWELL LADIES	page 21
WI & BOOK CLUB	page 23
BAWDESWELL HEATH	page 25
ICENI	page 27
VILLAGE GAMES	page 29
REEPHAM LEARNING COMMUNITY	page 31
BENEFICE NEWS	page 33
FOXLEY CHURCH	page 34
RECTOR'S LETTER	page 35
CHURCH SERVICES	page 36

NOTICE BOARD

Jennifer Burlingham would like to say a big thank you to everyone for the cards, flowers, chocolates and good wishes and all the many visitors who came to see her following her recent spells in hospital. This has all been very much appreciated.

Bawdeswell Over 60's Group

Outing to African Violet Centre & Wisbech on Thursday 17th June departing at 9.30am. Cost £5.50

Contact Gladys Dobbs 668644

B.A.L.G.A. Tractor Run

The tractor run on 9th May exceeded all expectations. 39 tractors took part and made an impressive sight going through Bawdeswell.

Even the weather was kind, with the sun shining when we stopped at Brisley Bell for a lunch break.

A warm welcome was received from the landlord and his staff, who provided excellent food.

A big thank-you to everyone who helped to make the day special.

£375 was raised for the Allotment Fund and it is hoped it will not be too long before it can be put to good use.

Would anybody be interested in going for a picnic by tractor and trailer? Contact Tony Hood on 688218.

Chris Hood

The Friends of Bawdeswell Church

Thank you everyone who supported the Spring Concert, Roger Rayner for his breathtaking virtuoso performance, all who baked for the delicious cream teas, and everyone who bought tickets. It was a great success. *R.T.*

Brian Tipper

It is with great sadness that I must report the recent death of Brian Tipper who retired to Australia after living in Bawdeswell for some years. I am sure that everyone's thoughts will be with Carol and their children at this sad time.

David Cockburn

Flower Arranging Workshop Tuesday 6 July at 10am Bawdeswell Village Hall

Morning Session – a traditional pedestal.

Lunch

Afternoon Session – a modern pedestal

£10 including Lunch Contact Sue Lilwall 01362 688240

JUNE DIARY

Tue 1 – Fri 4	Half Term activities at Bawdeswell Village Hall – <i>see page 4</i>
Wed 2	Bawdeswell Bridge Club 7.15pm ICENI Masterclass 7.30pm
Thu 3	Bawdeswell Book Club meets at Old Workhouse Bar 7.30pm
Fri 4	Family Fun Afternoon at Bawdeswell Village Hall from 1pm Bawdeswell Blood donor session today cancelled – retimed for 23 rd June
Sat 5th	ICENI Workshop in Bawdeswell Church - 1030
Mon 7	Bawdeswell Parish Council Meeting
Tue 8	1.30pm School Sports Day
Thu 10	Craft afternoon at Bawdeswell Village hall 2pm
Fri 11	Bawdeswell Bridge Club 2.15pm Julian Group meets at Barwick House, Bawdeswell 8pm
Mon 14	School year 5/6 off to Kingswood Activity Centre for the week. WI meets at Sparham Old Schoolroom 7.30pm Talk on Russia. Visitors welcome. Table Tennis at Bawdeswell Village Hall – <i>see page 4</i>
Wed 16	Bawdeswell Ladies Coffee Morning – <i>see page 21</i> Bawdeswell Bridge Club 7.15pm
Thu 17	Bawdeswell Over 60's club outing departing 9.30am - <i>see page 2</i>
Sat 19	Health & Wellbeing Day at Reepham College – <i>see page 31</i> Bawdeswell Cinema opening night – <i>see pages 6 & 10</i>
Sun 20	Foxley Open Gardens 2 – 4pm
Mon 21	Bawdeswell Village Hall Committee Meeting 7.30pm
Wed 23	Blood Donor Session at Bawdeswell
Thu 24	Craft afternoon at Bawdeswell Village hall 2pm
Fri 25	Bawdeswell Bridge Club 2.15pm Julian Group meets at Barwick House, Bawdeswell 8pm
Sun 27	Bawdeswell Fete and opening of new play area – starts 11am. Car Boot 10am.
Wed 30	Coffee Morning at Foxley Village Hall 10.30am

Regular Weekly Events

Bawdeswell Village Hall

Young Farmers Tuesdays
Countrysiders Every other Wednesday
WeightWatchers Thursdays
Parents & Toddlers Fridays 9.30am
Pilates Fridays
Runners Thursdays 6.30pm
Basketball Thursdays 5pm
Seekers 1st Saturday

Bawdeswell Church

ICENI Choir practice Wednesdays 7.30pm

Foxley Village Hall

Exercise Classes
every Tuesday morning at 9.30am.

Short Mat Bowls Every Monday & Friday Evening

Half Term At The Hall

Please see below for half term activities which (including materials) will be **FREE** of charge, although donations towards the costs will be welcomed. These activities at Bawdeswell Village Hall are open to all residents of Bawdeswell, Foxley and surrounding villages. As usual the 'CAFE' will be open every afternoon for hot & cold drinks, sweets & crisps etc. from 1 – 4 pm.

We accept children aged 9 years and over with parental consent (written consent on our specific form - available at the hall or in advance contact 688749 - is required). Children under 9 **MUST** be accompanied at all times by a responsible adult (18 plus). Attendance of unaccompanied children is of course subject to their good behaviour.

Events for children under 9 years – parents bringing children under 9 may bring older children who can join in whilst the parents are there. Pool and table tennis will not be available.

Events for children 9 years and above – parents of children attending may bring younger children but they will need to be closely supervised. No specific activities or equipment other than drawing/painting or similar will be available for the younger children.

PLEASE NOTE : If any parent has concerns about the interaction between their child and another they must speak to one of the volunteers rather than speaking to the other child involved.

Half Term Program - 1pm – 4pm

Tuesday 1st June	Cooking Club (BAG Baking)	– Under 9's
Wednesday 2nd June	Indoor/Outdoor Games	– All Ages
Thursday 3rd June	Cooking Club (BAG Baking)	– 9 and over
Friday 4th June	BAG & Breckland Family Afternoon	– All Ages

Table Tennis – fun evenings - Mondays 14th & 24th June 2010 - It doesn't matter how well you play - come along and have some fun or just come along to socialise. Other games available and the BAG café will be open for refreshments. Cost - **£1.50 adult or 75p under 18** towards the hire of the hall. Further information from Janet on 688749.

Bag 4 Bag

The last collection was smaller than our previous ones, but still generated £152 (split between BAG and new hall fund). Our next collection is on 4th Nov.
General recycling can be done at the village hall – papers/cans/bottles – the village earns money from what we recycle..... Please keep the area tidy and safe.

Running club

When we started a year ago in May, Debbie had just run the London Marathon. That first night, we ran/walked to Floranova and back (from the village hall) and that was enough! Some of us were used to running on the treadmill and were unsure about running 'outside' some of us hadn't done ANYTHING!!! Fast forward to about August last year and we had the running bug... we entered the City of Norwich Half Marathon in November... and most importantly; we finished! If you were like we were a year ago... come join us. We are a very friendly bunch and ANY ability is welcomed. The conversation is ALWAYS varied and NEVER dull!

Thursdays 6pm at Bawdeswell Village Hall (If you are a member of Weight Watchers, you even have time for your weigh in before we start!) Only £1 – towards the new hall fund. More details from Debbie 688098

Men's race for Life – Sunday 26th September 2010. Start and finish at Bawdeswell Village Hall, 5K through the residential roads of the village. Any age, any size, and ability... you just have to be male. Food and refreshments available – raising funds for the EVERYMAN charity – dedicated to funding research into prostate and testicular cancer. More details nearer the time... but plenty of female stewards/helpers/supporters needed. Keep Your Eye On The Ball... and this page!

Play area

It's nearly done! Everybody must come to the Grand Opening at the fete; SUNDAY 27th JUNE from 1.30pm. Thanks for being so patient, it's taken a lot of meetings, emails, calls and failed grants to get us to this point. We have spent £60,000 on improving and enhancing this area – for the benefit and inclusion of all. Please help to keep it as a proud asset for the village, by ensuring that any dog fouling is cleared up, any litter is put in the bins provided and that no smoking or drinking is done in the area... remember... it is a play area for CHILDREN. Many, many thanks to everyone who has helped or been involved in this mammoth project.

Competition – To be the person "officially opening" the area on fete day. If you are aged between 5 and 13, just write in 100 words or less "what the new play area means to me". All entries will be judged on Saturday 26th June and the winner will get to declare the area open (finally!) be sure to put your name, age and contact details on your entry, before you get them to Fel, 5 Reepham Road.

BAGY

The dates of the next 2 breakfasts are 18th July and 17th October – book it in your diary now. It's a fantastic morning with great local food, waitress service and a selection of the Sunday papers. You can even be served early so you are not late for church! 8.30 – 11am Full English, or continental if preferred. Bookings with Kelsey 688401



We've Got Our Equipment

BAG's Grassroots Grant money has now been spent to purchase a screen, projector, DVD player and sound equipment for the village hall. As we had a little money left over due to discounts found on the internet we have also purchased a Hearing Induction Loop system for the village hall. Our opening night will be Saturday 19th June when we present Alice in Wonderland (See separate ad in this issue) and on 24th July we will show 'The Lovely Bones'. Future dates are all Saturdays 14th August, 18th September, 23rd October, 20th November, 11th December. From January 2011 film night will always be the second Saturday of the month.

BAG will run the monthly film shows but there is an opportunity to create a Film Club to show your own DVD's under a Public Video Screening Licence that carries an annual fee.

If you would like to help with this club please contact David on 688749.



and



**Present A Family Fun Afternoon
With Giant Snakes & Ladders, Giant
Connect 4 and other activities**

on

Friday 4th June from 1pm

At the Village Hall & Recreation Ground

BBQ & Café Entrance Free

Roc at the Rec

Saturday 10th July from

6pm

at

The Village Hall & Recreation Ground

with

Tenda Hooks

And

V8 Rumble (t.b.c.)

BBQ and Bar

Entrance £5 (under 16's free with an Adult ticket)

Ticket Entry ONLY from Kelsey 688401 or Wendy 688602

Bawdeswell Village Hall

Bawdeswell Village hall can be hired by parishioners and non residents. You can also hire tables and chairs for your own events. Regular activities at the hall include Table tennis on the 2nd and 4th Monday of each month, Young Farmers on Tuesdays, Countryside Rangers every other Wednesday, Weight Watchers on Thursday evenings and Pilates on Friday evenings. The Mothers & Toddlers group meet on Friday mornings 9.30 to 11.30. Seekers meet on the 1st Saturday morning each month. Also there are regular table tennis evenings and a bridge for fun club.



Hire Charges are unchanged for 2010

Period	(1) Standard Hire Charge	(2) Parishioners other than in (3)	(3) Parishioners - Hires ending by 5pm on Weekdays #
Minimum (2 hrs)	£16	£15	£10
4 Hours	£30	£25	£15
6 Hours	£45	£35	£25
8 Hours	£50	£40	£30
10 Hours	£60	£45	n/a
12 Hours	£70	£50	n/a
Full Day	£85	£60	n/a

Excludes Bank & Public Holidays. Other hours charged pro rata.

When the hall is not otherwise in use on weekdays, Bawdeswell village voluntary groups may use the hall free of charge.

For availability, more details and a booking form please contact the booking clerk:-
David Cockburn, Tel: (01362) 688749, Mobile: 07778 835 254, Email: BawdeswellVH@aol.com
See our website – <http://eoe.xarg.co.uk/bawdeswellvillagehall/>

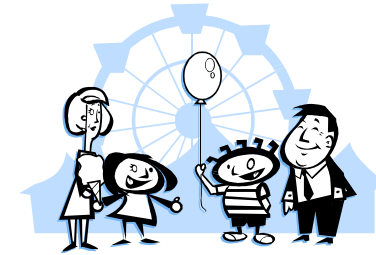
The next Village Hall Committee Meeting will be held on
Monday 21st June 2010 - 7.30 pm at the Hall



More 2010 Dates
Wednesday 23rd June 2010
(Friday 4th June 2010 cancelled)

The Mobile Blood Donor Van (Bloodmobile) visits Bawdeswell regularly at the Village Hall. The Bloodmobile also visits Reepham, North Elmham & Swanton Morley regularly if you are unable to attend on the Bawdeswell dates. Attendance by appointment only!

To make an appointment call the National Blood Service on 0845 7 711 711
or visit their web site www.blood.co.uk for more information



Bawdeswell Fete

and Car Boot Sale

Sunday 27th June from 11am

Programme of events:-

- 9am – Car Boot Set-Up (no sales until 11am)
- 10am - 3 on 3 Basketball Tournament starts (pre-booked entry)
- 11.00am - Fete opens
- 11.00am - Cheerleading and Majorette demo
- 11.30am - Bawdeswell School Clubs demo
- 12pm - Bowling Tournament starts (pre-booked entry required)
- 12.30pm - Races - all ages
- 1.30pm - Play Area Official Opening
- 2.30pm - Fun Football Match

There is no official "close" to the day... it normally depends on the weather, the bar and the people!

As always, the profit is split equally between the following groups:
Friends of Bawdeswell Church' Bawdeswell Church Council (PCC), Friends of Bawdeswell School, Bawdeswell PreSchool, Village Hall,
Project Bawdeswell/Bawdeswell Activities Group



Presents

ALICE IN WONDERLAND



Saturday 19th June

At Bawdeswell village Hall from 7.00 pm
(film starts approx. 7.30 pm)

BOOK TICKETS IN ADVANCE - Limited Audience

Call 01362 688749

£3.50 adults, £2.50 children U18,

£10 Family (2A+2C) and £1.00 for every extra child

The Cafe and a Bar will be open from 7.00 to 10.30 pm. for refreshments



BRIDGE CLUB

The Club meets weekly in Bawdeswell Village Hall.

Although experienced players are part of the group, and very welcome, many members have recently learnt to play bridge or have not played for a long time and have resumed playing.

The Club meets once a week alternately on every other Wednesday evening at 7.15pm for a 7.30pm start, finish at 9.30pm and every other Friday afternoon at 2.15pm for a 2.30pm start, finish at 5.30pm.

June dates are Wednesdays 2nd & 16th and Fridays 11th & 25th.

Call Roger Fryatt on 01362 688627 for more information.



BAWDESWELL BOWLS CLUB.

Bawdeswell Bowls Club are about to start their new season at their excellent venue situated behind the Village Hall. We play in two leagues - the Cawston Triples League and Dereham and District League. Both leagues raise money for local charities. Last season we finished in top position in the Dereham league, and in third position in the Cawston league. Foulsham and Bintree Bowls clubs also use Bawdeswell's green. New players are always welcome.

For further information please contact Paul Digby on (01362) 688615

PARENTS & TODDLERS / BABY GROUP

We meet at Bawdeswell Village Hall from 9.30am to 11.30am every Friday in term time.

Come along for a chat and a coffee & let your child have some fun with play dough, colouring and puzzles plus lots of toys. £1.50 per family includes a free tea/coffee and juice.

For more information call Kate on (01362) 688834



BAWDESWELL FOOTBALL CLUB.

The club plays in the 3rd division of the Crown Fire Central and South Norfolk League. Home games are played at Bawdeswell Recreation Ground.

For more information about the club please contact Philip Duffield on (01362) 688611. For information about matches see <http://www.csnleague.co.uk/index.html>.



BAWDESWELL ALLOTMENT & LEISURE GARDENERS ASSOCIATION



The association is lobbying the Parish Council to provide allotments for the village. If you would like to join or would like more information contact Jayne Bown on 01362 688388 or see our website at <http://eoe.xarg.co.uk/balga/>

SUMMER CLUB

Calling all children from 6-11!

Why not join us at this year's Summer Club at Sparham Church every morning of the week July 26th - 30th. We start at 10am and end at 12noon. Our theme this year is Super Heroes. You will need a plain (doesn't have to be new) T shirt to decorate.

Fees are £2 per session, you can come to one or two or all of them. We promise you lots of activities, games, stories and plenty of fun.

See you there!



BAWDESWELL COMMUNITY PRIMARY SCHOOL

Sports Day

This year we are holding our Sports Day earlier than normal, it is on June 8th from 1.30pm. If the weather is bad we will attempt to run it the following day June 9th at the same time. All Parents/Carers, Grandparents etc welcome.

Our Year 5/6 group are having a week at Kingswood Activity Centre on 14th to 18th June. It's a great week enjoyed by all the children. It's a great team building opportunity.

Art Workshop

We have been extremely lucky to have the Castle Museum working with us in Art. The children have enjoyed a couple of days with the staff from the Castle coming into school doing art activities and they are lucky enough to be going to the Castle to work with them also. Thank you to the Castle for these opportunities.

22nd June we are holding the Cluster Creative Day. This is where children in Reception and Year 1 from the cluster schools come together for a creative learning day. Each year is very successful and all the children behave extremely well and seem to enjoy the day.

Move up day

Year 6 children will spend the day at Reepham High School on Friday 16th July. This is also when the new Reception children come into school to spend the morning in their new classroom and the rest of the school move up to spend time with their new teachers.

Dates

Summer Term	Monday 19 th April to Friday 23 rd July 2010
Half Term	Monday 31 st May to Friday 4 th June 2010

Foxley

OPEN GARDENS' DAY
Sun 20th June 2 to 4pm
Entry: £3.00

“Honeyfield”

The Garden was, until 1999, just a piece of pasture. Then, when Sheila and Dennis Barrett moved in, their aim was to develop a ‘country garden’. The jury is still out on whether they have succeeded! One of the ponds’ liner has become mole damaged, and is going to be filled in. Any suggestions for a new horticultural purpose for this space will be eagerly listened to!

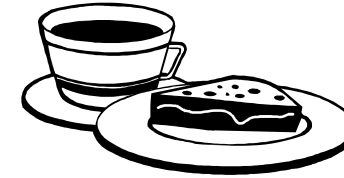
“Street Farm”

Over a 20 year period, Mary and John Fletcher have worked diligently to create this delightful 4 acre garden. It includes, amongst other features: a secret woodland; alpine garden; large natural pond; birch coppice and fern bank. Damaged herbaceous borders, damaged by adverse winter weather and a rabbit invasion, have been remodelled. There is always something new to discover and admire in this garden.

“Old Hall Farmhouse”

Commenced in 2003 and using the open landscape behind the property to complete the picture, Ruth & Gordon Whitmore have developed Spring and Summer Wildflower meadows containing well over 40 different species. To feed the family ‘Raised vegetable beds with a Difference’ have been constructed and new border planting to suit harsh weather conditions commenced in March 2010.

**SPECIAL FATHERS’ DAY REFRESHMENTS IN
 FOXLEY VILLAGE HALL**



COFFEE MORNINGS

FOXLEY VILLAGE HALL

Wed 26th May at 10.30am
Wed 30th June at 10.30am

TASTY BITES, MARDLE & RAFFLE

All Welcome

FOXLEY PARISH COUNCIL
EXTRACT OF THE ANNUAL PARISH MEETING HELD ON 12TH MAY 2010
AT 7.30PM IN THE VILLAGE HALL

Present: Councillors Harvey, Mears, Barrett, Hatch, Mr B Borrett (County Councillor), Mrs C Boer and 5 Parishioners

Issues Raised by Parishioners: There were no issues raised by parishioners, however it was highlighted that after all these years and the efforts of Dr Rushbrook the church bells can once again be heard. The Parish Council congratulated Dr Rushbrook on his endeavours and commented how nice it is to hear the church bells.

EXTRACT OF THE ANNUAL PARISH COUNCIL MEETING HELD ON 12TH MAY 2010 IN THE VILLAGE HALL

Present: As above and Mr G Bambridge (District Councillor)

Election of Officers: Councillors Harvey and Mears were re-elected as Chairman and Vice-Chairman respectively.

Chairman's Report: As below.

Clerks Financial Report: A summary of the Parish Council Accounts for 2009-2010: Total income amounted to £4359.07, which included a balance brought forward from 2008-2009 of £558.82, Total expenditure for the year was £3444.80, therefore leaving a balance to be carried over to year 2010-2010 of £914.27.

Village hall Committee Report: The Chairman, Mrs Whitmore provided an excellent and detailed report on the past years activities of the Village Hall Committee. The Parish Council thanked the Committee for their continued hard work in providing an excellent facility for the village,

Chairman's Report to 2010 Annual Parish Council Meeting

The Parish Council met, as usual, in May, July, Sept, Nov and Feb. Apart from the usual round of planning applications, Highways and Village Hall matters etc, there was one major, all consuming item affecting the whole village in the year 2009/2010 – namely what started out with the title “West Foxley (First Time) Sewerage Scheme”. Anglian Water held an open meeting to explain/consult with parishioners on 15th July 2009. They expected to be finished by Christmas 2009. Barhale Ltd were appointed the contractors and they were getting along handsomely until they were stopped just short of West Foxley sewage treatment plant (which, admittedly was extra work outside the original scheme), whereupon May Gurney took over. They were also to pick up the East Foxley system re Lawrence Place. They are still here and there have been many complaints about poor communication, length of disruption and days off the job. Whether the inevitable damage to verges and road

surfaces are adequately repaired, as promised, remains to be seen and the Parish Council will be monitoring.

While on the subject of the long disruption during digging up The Street, our grateful thanks should be conveyed to Mr Paul Davis (and residents at Church Farm Barns), for allowing parishioners to use the roadway round the barns for access to their homes, thereby saving on the very long journey via Foulsham. What we need now is a proper sewer constructed for The Street. I don't doubt the same will be said for many years to come.

I cannot close this report without expressing our sadness at the news that our Clerk is leaving us, due to pressure of time and her many other roles. She has a good and efficient system up and running, keeping us well informed and organised. We shall miss her and we wish her well for the future and offer our grateful thanks. My personal thanks go to my Vice-Chairman and fellow Councillors, also District Councillor Gordon Bambridge, for their time, help and attention over the past year.

John Harvey, Chairman

BAWDESWELL PARISH COUNCIL DIGEST OF
THE ANNUAL PARISH COUNCIL MEETING HELD ON 10 MAY 2010

Present: Councillors Shannon, Mason, Beane, Green, Lilwall, Kirby, and 3 parishioners.

Election of Officers: Councillors Mason, Kirby, Mallen and Green were co-opted back on to the Parish Council for a further year. Councillors Shannon and Mason were re-elected as Chairman and Vice-Chairman respectively.

Clerks Report:

A Summary of the Parish Council Accounts for 09/10: Total income amounted to £50,136.56, which included a balance brought forward from FY 08/09 of £11,038.26. Total expenditure for the year was £35,459.41. The £4082.00 received by the Trustees from the sale of the Old Surveyors Land, which was being held within the Parish Council accounts, has now been transferred to a new account; therefore the balance to be carried over to year 10/11 was £10595.15. It was noted that there were unusually large transactions outstanding at the year end because of the play area development.

A Summary of the Project Bawdeswell Account for 09/10: Total income amounted to £6660.67, which included a balance brought forward from 08/09 of £3660.67. The total expenditure for the year was £5037.18, leaving a balance to be carried over to year 10/11 of £1623.49. However, £5000 of the total expenditure, which was used in March to help cover invoices associated

with the new play area pending the VAT refund and interim grant payments from Breckland, has still to be transferred back to the Project Bawdeswell Account from the Parish Council.

Resume of Work for 09/10: Visits to the PC included: PCSO Angie Powles to discuss policing issues and Mr R Gurney, Chairman of Bawdeswell Heath Trust, to discuss the challenges the Trust are experiencing and the support it needs. The Parish Council has also been involved in pursuing allotments for parishioners, the refurbishment of Adam's Pit, the successful launch of the Community Speedwatch and Community Car Scheme, and the new children's play area project.

Items to be Addressed in the Forthcoming Year: These will include: continuing to pursue the provision of a flexibus service and refurbishment of the bus shelter by the school; addressing road safety/parking in the village, and the periodic invitation of the Police and Chairman of the Heath Trust to discuss issues of mutual interest.

BAWDESWELL PARISH COUNCIL

DIGEST OF THE PARISH COUNCIL MEETING HELD ON 11 MAY 2010

Present: Councillors Shannon, Mason, Beane, Lilwall, Mallen, Kirby, Green and 3 parishioners.

Ongoing Issues from Previous Meetings

Adams Pit: Refurbishment work has temporarily ceased during the wildlife breeding season. A recent meeting between Parish Council representatives and Ed Stocker, Ecologist at NCC, had revealed that the latter was very happy with the work undertaken so far and, in principle, with the proposals for excavation work in the autumn. It is hoped that the Trustees will, once again, be able to attract 40% match funding grants for the proposed excavation work. The current water level is very low, which should aid excavation, and the latter will increase the eventual depth of water, and a swan-necked pipe fitting will eventually control the maximum water level in accordance with the Ecologist's advice.

Allotments: The Chairman and Clerk are expected to meet with a second local landowner to discuss possible land for allotments within the next two weeks.

Planning

3PL/2010/0394/F: Cobb Breeding Co Ltd, Elsing Lane, proposed extension to hatchery building for the storage of equipment related to the hatchery; the Parish Council had no objections to this application.

3PL/2010/0341/F: Cobb Breeding Co Ltd, Elsing Lane, redevelopment of extg broiler breeder unit, demolition of 11 sheds and erection of 6 new with associated feed bins; the Parish Council had no objections to this application.

3PL/2010/0402/F: Bawdeswell Village Hall, temporary portable building to be used as meeting room, changing rooms, and storage; the Parish Council had no objections to this application.

Any Other Business of Interest to Parishioners

Children's Play Area: Work on the new 8-13s children's play area is now complete, although parents are asked to keep their children off the area whilst the grass gets established. Fel Roberts has managed to secure a further grant of £3,000 from Breckland District Council, so that about £10,000 is now available for the under 8's area. The work on this area has been put out to tender and should be completed in the next few weeks, in time for the formal opening of the children's play area at the Village Fete.

Village Hall: The Parish Council congratulated the Village Hall Committee and Bawdeswell Activities Group on securing a grant to fund the purchase of equipment to set up a village cinema in the Village hall. The first film night will be on 19 June.

Bus Shelter Repairs: Unfortunately, NCC officials have lost all the paperwork relating to the grant application for the bus shelter repairs, submitted last year. The Clerk has therefore been commissioned to re-submit an application, and NCC has assured the Parish Council that they will deal with this application as a priority.

Glass Recycling Credit: Breckland District Council has confirmed that the Parish Council will receive a glass recycling credit of £476.01 in respect of 22.581 tonnes of glass recycled through the bottle banks; so to all those parishioners who take the time and trouble to re-cycle their glass in our bottle banks – thank you – you can see the effort was worth it!. The Parish Council will consider how to best to use this money at its next meeting in June, so if parishioners have ideas for a good cause within the community would they please let the Parish Clerk know.

Land in Front of Folland Court: Peddars Way have indicated that this area should be turfed in the near future. The Parish Council will then eventually take over the responsibility for the upkeep of this land. The future use of this area will be discussed at the next Parish Council meeting in June. Suggestions so far include a memorial garden and a possible play area; however, parishioners are invited to put forward any other ideas they might have to the Clerk by 1st June.

Date of next meeting is: Monday 7th June 2010

Contact Details for the Parish Clerk - Claire Boer

Tel: 01362 688415/07877955745 Email: cboer.pariahclerk@fsmail.net

RAVENCROFT TREE SERVICES LTD



For the preservation and management
of trees.

All aspects of tree work undertaken,
with free quotations.

Tree consultancy services provided
Contact Richard Ravencroft Tel: 01362 684291
www.ravencrofttrees.co.uk

ANNE WEITZ

GTCL LTCL Dip Ed (Lond)
Member ISM-EPTA-BKA
Tuition in Piano, Theory,
Sight Singing; Musicianship
ABRSM and TCM exams
Beginners to Advanced
All ages welcome
01362 688466

Bryan Ellum FRCO GRSM

LRAM ARCM Member ISM
Tuition in organ
and piano
All levels – Adults welcome
Accompanist for Exams etc.
40yrs experience
N. Elmham **01362 668156**



Your local contact
Charlie Reeve

Save money on gas, electric,
broadband, phones
and mobiles
Free Quotes

Tel: 01362 688210 Mobile: 07951 889917
FREEPHONE **0808 108 1002**
Email: charliereeve@telecomplus.org.uk
Website: www.telecomplus.org.uk/charliereeve

WANTED

Do you have old or rotten trees, perhaps
wind fallen or broken ones, I will cut and
remove free of charge, anything
considered.

Call D J Taylor: 07981 792790 evenings
or weekends.

G.A.EGMORE & PARTNERS

of Sparham

**Coal, Smokeless fuels,
Pre-packed & Barbecue fuels**

Also parts for Solid Fuel Fires

Regular Deliveries 6 days a week in
all areas. Quality, Service, Reliability.

PHONE 01362 688270



Bawdeswell Ladies Coffee Morning

Wednesday 16th June 10.30am

Rene Kent has invited us to join her for coffee in her garden on
Wednesday 16th June from 10.30 am. There will be a raffle, the
proceeds of which will go to a charity of our choice.

To assist with the seating and catering arrangements, please let
Rene know (688397) if you will be able to make it.

INFORMAL CRAFT AFTERNOONS

We continue to meet on the 2nd and 4th Thursday afternoons at 2 pm in the
Village Hall. It is very informal and everyone brings their own work and we
have also been knitting squares and children's jumpers for an overseas aid
agency.

We are also pleased to have raised money and made a donation to the new
Children's Play area. Anyone is welcome to join us just for a cuppa and a
chat.

We are going to continue throughout the summer months and the dates are
June 10 and 24, July 8 and 22, August 12 and 26.

Enquires to Marietta Menzies 01362 688 400.

The Elsing Heritage Society is pleased to announce that Dr Ken Mourin will
be giving a lecture on the monumental brass dedicated to Sir Hugh Hasting in
St Mary's Church, Elsing at 2 p.m. on Saturday June 12th. Dr Mourin is an
expert in the field of heraldry and has made a comprehensive study of the
brass and its history, and we hope that you will join us. Entry to the lecture is
£3 per head - under 16yrs no charge.

From 10.30a.m. on the same day we will be opening an exhibition of local
photographs and maps from times gone by, and there will be an opportunity to
make a rubbing of parts of the facsimile of the brass.



AQUAFIX
PLUMBING & HEATING SERVICES

*From dripping Showers & Taps.....
....To fitting Bathroom Suites & Kitchens
Floor & Wall Tiling, Water Softeners, Power Flushing*



For a Professional & Competitive Home Improvement Service

**Call Frank at - AQUAFIX on 01362 688880
or 07877 427344**

philip jacobs

Oil Fired Boiler Servicing
Repair & Breakdowns.

Friendly reliable local service

01362 688398
mobile 07887 902815

Carpet supply/fitting

*All types of carpet & vinyl supplied
and fitted. Choose at home from a
vast range, floor screeds, underlays,
gripper etc.*

Please call Jeremy Tyler
01328 829098
07834 401362

INDOOR HEATED SWIMMING POOL & SPA

MOOR FARM FOXLEY

Available for hire for your private use. Tel: 01362 688523

Purdys  Solicitors

Tel: 01603 870606
Fax: 01603 871332
email: mail@purdysreephams.co.uk

The Market Place
Reephams
Norwich Norfolk NR104LZ

PERSONAL, INDEPENDENT EXPERTISE

• Sales, • Purchases and Leases of Residential, Commercial and Agricultural Property
• Wills • Probate and Powers of Attorney • Licensing
Evening and Saturday appointments by prior appointment

BAWDESWELL BOOK CLUB



A Tale of Two Cities, by Charles Dickens

Mostly this novel was enjoyed by our members. It was felt that Dickens was not in his comfort zone writing about Paris during the revolution, about 80 years after the event, as he was writing about contemporary London. The number of coincidences that occur with characters cropping up connected to each other, either in Paris or London was also a bit implausible to 21st century readers, we thought.

However, the story is gripping, the scenes and atmosphere Dickens creates with words places the reader right there. The women characters are strong: Mme. La Farge and her knitted names sealing the fate of Charles Darnay as the son of an aristocrat, Mrs. Prosser's loyalty and strength and Lucie Manette's goodness and devotion. There is no compassion in Mme. La Farge or The Vengeance for Dr. Manette or Darnay and M. La Farge's compassion for the Doctor is seen as weakness. Every human emotion is present in the characters but Sydney Corton's love for Lucie transcends all others when he gives his life that her husband might live.

The theme of the sins of the fathers being meted out on the surviving generations is absolved by Corton's sacrifice of himself which, in turn, leads to his own redemption and is summed up in the famous last sentence of the book – "It is a far, far better thing that I do, than I have ever done; it is a far, far better rest that I go to than I have ever known."

The Book Club meets in the Workhouse Bar on the first Thursday of every month at 7.30 pm. New members are always welcome. We mostly obtain books from the library so there is not the expense of buying new books each month. We are reading The Suspicions of Mr. Whicher by Kate Summerscale for discussion at the June meeting and The Secret Agent by Joseph Conrad for discussion at the July meeting..



Our next meeting
Monday June 14th 7.30pm
Old School Room, Sparham
Talk: Russia – chest high flowers under Caucasian glaciers.

Visitors welcome

01362 688997 **RCD** Electrical 01603 743373
 www.rcd-electrical.co.uk info@rcd-electrical.co.uk
Your Local Electrical Service

RCD Electrical are proud to offer customers fast and friendly service coupled with expert knowledge.

Our service is flexible and customised to meet your needs so whatever your requirements contact us for advice, further information or a free, no obligation quotation.

Electrical installation
and maintenance

Additional sockets



Internal and
external lighting

Electric showers &
smoke detectors

24 hour emergency call out

Open Every Day
Kerri's Farmhouse Pine
 Quality Range of Gifts & Accessories
 Hand waxed Furniture
 Old Style Tea Shop
Reepham Station
01603 871187
 Traffic Free Cycle Hire

**Locally based accountancy and
tax service**



Self-Assessment Tax Returns
 Annual Accounts
Book Keeping
 VAT Returns

Committed to providing a prompt professional service at a sensible price. For a free initial consultation at a time to suit you contact
 David Pooley ACIB
 Tel/Fax **01603 866542** Mobile **0790 508 6960**
 e-mail: davidpooley@certax.co.uk

Charles Seaman

Interior/Exterior Painter and
Decorator

Tel: (01362) 688309

2 Bell Close, Bawdeswell, Dereham,
NR20 4SL

MARK HIGH
GENERAL BUILDER

Tel Mobile

01362 07796
 668896 061501

BAWDESWELL HEATH

Did you know that we have 3 hectares of Heathland less than a mile from Bawdeswell for the benefit of villagers and the surrounding areas. It is in the woods on the road to Dereham on the right hand side and there is a car park. It is a quiet area which is currently visited by dog walkers and those interested in wildlife and fauna.

The Heath is managed by the Trustees of the Bawdeswell Heath who meet twice a year and are responsible for ensuring all legal requirements are met as well as the maintenance of the biodiversity of the Heath as funds allow. With this in mind the following activities are prohibited: Motor vehicles, motor cycles, camping, fires, littering and taking wood. (If anyone witnesses any of these prohibited activities it would be greatly appreciated if you rang asap the number on the Notice Board in the car park and if possible remembered or even better photographed the vehicle registration numbers.)

It's free and it's on your doorstep. Go and have a look and if anyone is interested in taking a more active role then we would be delighted to hear from you.

R.G.

History of Bawdeswell Heath

Up to two hundred years ago the village lay in the middle of a large Common stretching westwards to Billingford and eastwards almost half-way to Reepham. Of Chaucer's Reeve of Bawdeswell we read '*He had a lovely dwelling on a heath, shadowed in green trees above the sward...*' The old Roman Road, known as Common Lane, ran alongside it to the west of the village and across it to the east.

In the year 1808 a private Act of Parliament caused the enclosure of the Common Land around Bawdeswell, resulting in the gathering up of arable land into very few hands.

This had been happening everywhere for some years as farming methods were changing from strip-farming to field farming - due to the modern methods being introduced by people like Thomas Coke of Holkham and Townsend of Raynham.

In the same year, 1808, provision was made to set aside two acres for gravel and 5 acres of woodland 'for the poor' - this is the Bawdeswell Heath we know today.

More form www.bawdeswell.net

Ed.

Lyn Walker DipCFHP MPSPract

Qualified foot health Practitioner

Treatment in the comfort of your own home

Nail cutting, removal corns, calluses,
in-growing toenails, fungal infection.

Tel 01328 700140 Mobile 07788440327



Nicky P.

Hair Design

Freelance Hairdresser

10 years experience

covering all aspects of hairdressing

For Appointments tel: 07799298020

Louise Ledbury

State Registered

Senior Hairstylist

Works Tuesdays and Thursdays

9am-3pm

at home,

2 Saxon Meadows, Bawdeswell.

For an appointment

please phone 01362 688666

Covering all aspects of
ladies hairdressing.



Gentle, effective therapies

Sue Whiting, M.A.R. I.E.B.Tera-Mai™ Assoc. M.I.H.S.A

Tel: 01362 688664 (Bawdeswell)

Reflexology - Aromatherapy - Reiki

Experienced & Registered Practitioner

Also:- *Reiki training and attunements

*Workshops (meditation - aromatherapy- baby reflex- skincare)

*Handmade natural skincare range

*Gift Vouchers & Gift Packs

Josephine Tym
MCSP
Chartered Physiotherapist

Registered member of the
Health Professional Council

Tel: (01362) Bawdeswell 688281

For assessment and treatment
at home or in treatment room

Jordans
Jordan Green
Whitwell
Norwich
NR10 4RQ

*Physio
First*

Helen Mears MCFHP MAFHP

Qualified Foot Health

Practitioner

Phone 01362 688251

Registered member of the

British Association of Foot Health

Professionals

Professional Foot Care Treatment

and

Pain Relief for a range of

Common Foot Dis



Old Hall Farm Barn
The Street, Foxley

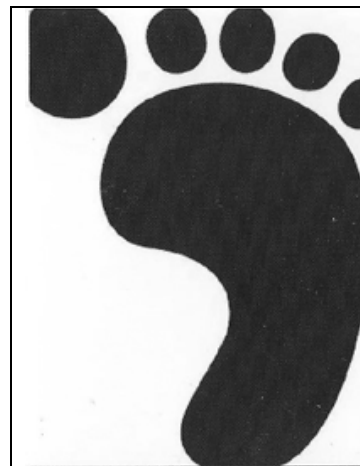
ICENI CHOIR – WORKSHOPS

Do you have a voice ? Would you like to sing ? come along to a **FREE** vocal workshop with Hannah Francis to try your voice and learn more about how to sing, along with members of the ICENI choir.

An open workshop on Saturday 5th June will be held at Bawdeswell Church 10.30a.m. - 12.30p.m, including a break for coffee. *Hannah Francis, international soprano, studied at The Royal College of Music. She was principal soprano with the English National Opera and has performed widely on the international concert platform. Hannah is president of the ICENI choir and works with the choir on voice production and performance technique.* Roger Rayner, ICENI accompanist will be at the piano during the workshops to help us on our way. If you would like to come along and just listen please join us.

An informal Masterclass will be held on Wednesday 2nd June at 7.30p.m. If you would like to see what individuals in the choir have attained and would like to have a try, come and have a go. Members of the choir will be singing a selection of pieces for the workshop. It will benefit members and is designed to encourage new people to join and to show the progression of the voice.

Both classes are free. If you would like to come along to either the masterclass or workshop more information can be obtained by contacting the ICENI Director of Music James Lilwall 01362 688499 / pjlilwall@hotmail.com



LARAS LITTLE TOES
Foot care in the comfort of
your own home

CLINIC ALSO HELD IN FAKENHAM THURSDAY/FRIDAY

Lara Smith MAFHP MCFHP

REGISTERED MEMBER OF
THE BRITISH ASSOCIATION
OF FOOT HEALTH PROFESSIONALS

TREATMENTS INCLUDE:

ROUTINE FOOT AND NAIL CARE
CORNS
CALLUSES
VERRUCAS
INGROWN NAILS
DIABETIC FOOT CARE

For an appointment please call:
01603 865135 / 07920 549531
or e-mail: laraslittletoes@googlemail.com



..... G P LANDSCAPING
BAWDESWELL

(Fencing Specialists – Commercial, Domestic and Industrial)

The best quality fencing that lasts the longest!

Also undertaking all hard landscaping; paths, patios,
driveways, turf and brickwork.

Locally based (Bawdeswell), fully insured, portfolio on request,
free quotations.

Contact : 07971 771204 / 01362 688159



G A Bishop



Oil, gas & lpg servicing and maintenance

Most appliances covered

Landlord certificates

Aga and Rayburn servicing

Experienced and insured

Gas Safe and Oftec registered

Tel: 01362 688999
Mobile: 07507850320

active
norfolk

norfolk village
games

Active Norfolk and Breckland District Council are asking villages across the county to assemble squads of players to compete in different sports varying from Archery, 5-a-side Football, Carpet Bowls, Netball, Table-Tennis, Rounders, Badminton, and Tug Of War at the Norfolk Village Games: Breckland event on Sunday 19th September 2010 at Watton Sports Centre.

The games are being delivered by Active Norfolk and Breckland District Council on the back of their successful *Norfolk Village Games* bid which has secured £577,700 from the £10 million Sport England Rural Communities fund, which was launched after research revealed that two thirds of the local authorities with the lowest sports participation rates are in rural areas.

People of all ages are invited to take part. Villages will be offered taster sessions in a variety of sports at their very own Sports Roadshow. These Roadshows will visit various parts of the county, including locations in the Breckland area, throughout the summer months in the build up to the Norfolk Village Games. The first Breckland Roadshow will be held at Watton Sports Centre on Saturday 24th July from 10am onwards.

Active Norfolk and Breckland District Council are appealing to volunteers to register their interest as Village Team Captains by visiting www.activenorfolk.org.uk/villagegames. We are looking to sports clubs, local business's and community groups to work together in order to provide representation from their area, and battle it out against other villages from across the Breckland area.

If you are interested, in the 1st instance, please contact the Parish Clerk - Claire on 688415



The BAWDESWELL GARDEN CENTRE

Monday to Saturday 9.00 am - 5.30 pm
Sunday 10.30am - 4.30 pm
01362 688 387
Between Norwich and Fakenham on the A1067

Cane and wrought iron garden and conservatory furniture

Perennials, trees, shrubs, house and bedding plants, alpines, herbs, seeds and bulbs

Pots, statues and garden accessories

Food Hall now open

Coffee shop serving home made lunches

The Millennium Garden



ABILITY Driver Training

Lessons or intensive courses
Very competitive rates
High first time pass rate

Call 01603 870276

Call or text 07754685159
www.abilitydrivertraining.co.uk

TELEPHONE BAWDESWELL 688211

J.A. BAKER
FAMILY BUTCHER
BAWDESWELL, Norfolk

ORDERS TAKEN FOR ALL DEEP-FREEZE MEATS



Vaughan Lapwood ADI

*Patient and Friendly
Driving Tuition*

Tel: 01362 690049
Mobile 07831 102311



Lilwall's Farm Pork
HOG ROASTS

for your function

50 - 500 people

Ring for a quotation
(01362) 688098 07867 987787
Farm Reared British Pigs

REEPHAM LEARNING COMMUNITY

Adobe Photoshop Introduction Course

Designed to provide knowledge of the basics of Adobe PhotoShop and the necessary skills to achieve professional looking results. You will learn how to manipulate pictures and other graphics elements. Basic/good understanding of Windows or Apple operating systems and some experience of word processing is required.

Wed 16th, 23rd, 30th June and 7th July 4 30pm – 6pm at Reepham College.
£10 per person for the course

Health and Well-Being Day.

Something for everyone. Come and participate in the activities or just come and enjoy the live entertainment provided by Serendipity (www.serendipity.eu.com) who will be playing the flute, saxophone and singing songs for all ages.

- Activity and Leisure including climbing tower, archery. Nordic walking and Tai Chi sessions – All FREE and bookable on arrival

- Food and Nutrition advice – healthy eating – stay for lunch, outdoor BBQ and picnic areas,

- Alternative Therapy and Treatment Area – Seek advice from our specialist therapists which include Osteopath, Homeopath and allergy testing plus many more. Treat yourself to a FREE treatment – bookable on arrival

- Learning and Information Area – health advice, career information, local event information

When - Saturday 19th June 2010 Time - 11am – 3pm Where - Reepham College

Cost - Adults £1, under 18s free

Please wear suitable clothing to participate in treatments and activities.

For more information and to book a place on either course, please contact

Reepham Learning Community 01603 308133

Sandie Athow 07796 698127

Bawdeswell Garage & MOT Centre

MOT's Class IV & Class VII

MOT's for Motorcycles Class I & II

Repairs and Servicing for all makes and models of Vehicles

Free Local Collection & Delivery of Vehicle - Recovery of Vehicles

State of the art Diagnostic Equipment

Fully Qualified Technicians

Friendly & Knowledgeable Staff - Quality Workmanship Assured

Health & HPI Check for Used Vehicles prior to purchase £50 + VAT

Mon - Fri : 8am - 6pm Sat : 8am - 12pm

**Park Farm Buildings Dereham Road
Bawdeswell**

Dereham NR20 4AA

Tel: 01362 688731 Fax : 01362 688943

www.bawdeswellgarage.co.uk

For all your Home & Garden Maintenance contact

J. D. Home & Garden Services

Professional & Reliable Workmanship

- ❖ *Garden Fencing Supplied & Erected*
- ❖ *Patio & Paving Laid*
- ❖ *Sheds Supplied & Erected*
- ❖ *Replacement External Doors & Windows*
- ❖ *Conservatories Supplied & Erected*
- ❖ *Floor and Wall Tiling*
- ❖ *All forms of Domestic Carpentry*

No Job Too Small – Free Estimates

Call Jason Dobbs on 01362 – 688824 or 07780 – 988628 (mobile)

Email: jdobbs@tiscali.co.uk

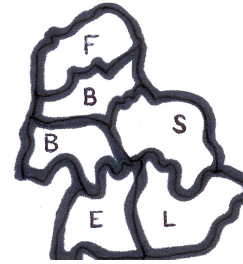
REEPHAM HOME HARDWARE

3 TOWNSEND CORNER, REEPHAM, NORWICH

Tel. 01603 871064

Paint Tinting Mixing System • CALOR GAS Stockists • Hardware
Full Gardening Range • Pet Food • Timber • Electrical • Tools
Shingle • Cycle Parts • Houseware

Mon - Sat 9 - 5 DEEP CLEAN CARPET CLEANER FOR HIRE LOCAL DELIVERIES Sun 10 - 12.30



Benefice News and Events

Events for June:

6th Lyng Church walk and tea starting from the Rectory 2.15pm

26th Sparham Fete

27th Bawdeswell village fete

Annual Benefice Walk

The annual Benefice walk is planned for Sunday 4th July. We shall set out from Hellesdon Mill car park (on Hellesdon Mill Lane, off Hellesdon Lane) at 3.30pm. This easy 4 mile walk follows part of Marriott's Way & then the Riverside Walk in Norwich. We hope to make a stop for refreshments en route, probably at a cafe, & arrive in ample time to join the **6.30pm Evensong at St. Julian's Church.**

Please contact Carole Jackson (01362 637752) by the end of June if you are interested in joining us.

Julian of Norwich (c. November 8, 1342 – c. 1416) is thought of as one of the greatest English mystics. Little is known of her life aside from her writings. In fact, it is not even known exactly when she died. She was last known to be alive in 1416 when she was 73 years old. Even her name is uncertain, the name "Julian" coming from the Church of St Julian in Norwich, where she was an anchoress (a type of hermit living in a cell attached to the church, engaged in contemplative prayer). At the age of 30, suffering from a severe illness and believing she was on her deathbed, Julian had a series of intense visions of Jesus Christ. (They ended by the time she overcame her illness on May 13, 1373.) She recorded these visions soon after having them, and then again twenty years later. The first version, called The Short Text, is more of a narration of her visions. The Long Text was written twenty years after the visions, and contains more theological commentary on the meaning of the visions. These visions are the source of her major work, called *Sixteen Revelations of Divine Love* (circa 1393). This is believed to be the first book written by a woman in the English language. Julian became well known throughout England as a spiritual authority.

You can find out more at www.julianofnorwich.org



A Julian Group meets twice a month in at Barwick House opposite the church in Bawdeswell, on the second and the last Fridays of the month.

Next meetings are on Friday 11th & Friday 25th June at 8pm.

Contact Susan March for details – 01603 870342

FOXLEY ST.THOMAS'

The Vestry and Annual Parochial Church Meetings were held in the church on Weds. 21st. April with the Rev. David Head in the Chair. The Rector thanked John Harvey and Tony Rushbrook for their commitment as churchwardens during the past year; both were willing to continue in office and were duly re-elected. Likewise, at the second meeting, John Harvey is to continue his other roles as Lay Chairman and Treasurer, Diana Harvey, Secretary and Monica Hatch is to continue to compile the Electoral Roll. The 8 members of the P.C.C. were re-elected and we were pleased to welcome June Vince to join us.

The Rector expressed his thanks for our efforts and John Harvey, supported by Tony Rushbrook, thanked those who, in particular, had helped us cope in 2009. John Fletcher would shortly complete 25 years at the organ – an invaluable contribution; Vic Gathergood had kept the churchyard 'in the best order for many years', Jayne Hough had braved the chilly conditions to keep everything clean and polished and the Flower Ladies had continued to exercise their decorative skills.

If our planned renovations, not least to the bells are achieved – and there is still some way to go towards their funding – then St. Thomas' will continue to be the 'sacred space' at the heart of our village. We shall still be able to gather there in times of joy and sorrow for baptisms, weddings and, alas, funerals; landmarks in our human existence experienced there for many hundreds of years.

Diana Harvey, P.C.C, Secretary.

The Children's Society

The fact that we raised £112 at our "Bake and Brew" coffee morning on St. George's Day speaks volumes about the generosity of our supporters. Sadly their number, on this occasion, was small (there are so many coffee mornings these days!), but the Old School Room at Sparham is such a warm and intimate venue that we were able to enjoy our coffee and Christine Rushbrook's tasty scones, without feeling too lonely or deserted – and we did benefit when the Draw numbers announced! Anyway "every little helps" and the Society's need for funds is very great at the moment; financial pressures on parents tends to lead to pressures on children in ways we hear all too often. The Society's work advising and supporting parents, mothers in particular and rescuing young runaways, whose lives have become intolerable at home, is vitally important. If these children and teenagers' lives are blighted by lack of stability, love and care, their chances of leading balanced and contented lives as adults is greatly reduced and our society will suffer.

The "powers that be" are now promoting their long-existent "housebox scheme", I suspect because corporate support is declining. So I'll repeat my plea – do contact me (phone number below) if you would be willing to pop your spare change or a regular pound or two into a little housebox. In our group we raised £1236 this way last year, which will also have been substantially increased by Gift Aid.

Plus – thank you so much for your donations of goods for our shops; our carport is always available to receive items (not electrical) if we're not in.

Diana Harvey, Parish Co-ordinator. 01362 688650

From the Rector

Dear Everybody, hello again.

As I write, the political parties are trying to broker a deal to give the country a stable government. By the time you read this, we will have some clearer idea of who has made what compromises, and why.

It seems that the markets do not like political instability. You can understand this. If the markets make money out of trying to predict what is going to happen, they don't like other people making things unpredictable. They can't plan, or guess confidently.

In our lives, it is often the uncertainties that cause us stress. Moving house, changing jobs, a company going under; these and many more events that loom and then happen can make us anxious as we wait.

Yet uncertainty can also be creative. We are made aware again of the contents of the manifestoes of the parties; we wonder, what *is* the best thing to happen? As people compromise, they think about others' agendas and needs. We might end up with the best of both.

In our lives of faith or belief, uncertainty is a good thing too. There's a saying: "The opposite of faith is not doubt, but certainty." (I've googled this to find the author, but lots of people seem to have said it.) It suggests that as soon as we think we know the whole answer, we stop asking questions. But there's always more to learn. Faith is the belief that God will tell us more. We seek the truth, more truth.

Those who talk now about trying to do what is best for the country are using the uncertainties of the present time as a catalyst for good. They say: we will seek the truth, not the advantage of our tribe; we will do what we believe to be best.

Clarity may be a good thing, but taking time to find the truth when things are unclear – that may be better than a speedy decision.

God bless you.

David Head

F.L.E.B.B.S. BENEFICE CHURCH SERVICES

Rector: The Revd David Head
01603 872381 david@davidhead.plus.com

Date	06/06	13/06	20/06	27/06
Season	1st Sunday after Trinity	2nd Sunday after Trinity	3rd Sunday after Trinity	4th Sunday after Trinity
Foxley	18.30 EP DH		8.00 HC PB DH	10.30 HC1 DH
Lyng	9.00 HC2 DH		17.00 EP DH	10.30 FS FST
Elsing	10.30 HC1 TC	10.30 OMS DH	9.00 HC1 DH	10.30 W&P CW
Bawdeswell	10.30 HC1 DH		10.30 GiG GiG team	10.30 MP CW
Bylaugh		9.00 HC PB DH		9.00 MP CW
Sparham	10.30 FS OASIS		10.30 HC PB DH	9.00 HC DH

**Bawdeswell mid week communion at 9am on Wednesday 23 June.
Lyng 9.30am every Thursday morning.**

DH	The Revd David Head
TC	The Revd Tom Candeland
CW	Church Warden
FST	Family Service Team
OASIS	"On a Sunday in Sparham"
GiG	"God is Good"
MP	Morning Prayer
HC1	Holy Communion <i>Order 1</i>
HC PB	Holy Communion <i>Prayer Book</i>
FS	Family Service

Moor Farm Stable Cottages

Moor Farm, Foxley, Dereham, Norfolk, NR20 4QP

Tel: (01362) 688523 (24hr answerphone)
688393 (evenings)

*A Courtyard of 8
2/3 Bedroomed Converted Stables
together with Individual Cottages.*

All fully equipped and Centrally heated.

Long or Short Term Lets

OPEN ALL YEAR

Visit our Website: www.moorfarmstablecottages.co.uk

DAVIS EGG SALES

MOOR FARM, FOXLEY, DEREHAM, NORFOLK, NR20 4QN

Tel: (01362) 688523



Your Local Egg Supplier

Pre-packs - Keyes Trays
Shrink wrapped - Free Range

Ewings Rentals

*For all your residential lettings
Please telephone 01603 879116*



*Market Place, Reepham
www.ewings.co.uk*



Paul E. Soanes

TV ENGINEER & AERIAL INSTALLER
EST 1974

HAVING DIFFICULTY SETTING UP YOUR TV,DVD,DIGITAL

**TEL 01603 871251
FOR HELP**



J MEARS LTD.

OLD HALL FARM BARN,
THE STREET, FOXLEY,
E. DEREHAM, NORFOLK
TEL: (01362) 688251
Building Contractors



Registered House-Builder

All types of Building work undertaken.
New houses, Extensions, Renovations, Roofing, Repairs.
Warranty available on all work.

**Hendry & Sons
Funeral Directors**

Private Chapels of Rest
Richard Hendry DIP.F.D

Member of N.A.F.D

Station Road, Foulsham, Dereham, Norfolk

Tel: (01362) 683249



Britannia Blinds

Your local manufacturers and fitters of
**Blinds - Curtains
Flooring - Sun Awnings**

Exclusive offer to Reeve's Tale readers!

**3 VERTICAL OR ROLLER BLINDS
FITTED FOR**

£149

Max width 6' x any drop from our Euro City collection

**CONSERVATORY BLIND SPECIALISTS
FREE QUOTATIONS & FREE FITTING**



01362 790319

**2 Shepherds Business Park, Lenwade, NR9 5SH
Reg. Office, Copperfields, Dereham Rd, Bawdeswell, NR20 4AA**