

**TUESDAY & FRIDAY
MORNINGS
9am - Noon**

in
BAWDESWELL CHURCH

POSTAL SERVICES

PENSIONS

CAR TAX

BILL PAYMENTS

BANKING
ETC

Cover: Winter in Bawdeswell

**COPY FOR THE MAR 2012 ISSUE
BY 15th FEB PLEASE**

Editors:
Robin Taylor
Angela Shannon
Stewart Comie

e-mail : magazine@bawdeswell.net

CONTENTS

LETTERS	page 2
EVENTS DIARY	page 3
NEW VILLAGE SIGN	page 4
SANTA'S VISIT	page 5
BAWDESWELL VILLAGE HALL	page 6
VILLAGE CINEMA	page 7
B.A.G. HALF TERM ACTIVITIES	page 9
FRIENDS OF BAWDESWELL CHURCH	page 11
CRAFT GROUP	page 11
BOOK CLUB	page 13
BECK WI	page 15
FOXLEY PARISH COUNCIL	page 16
BAWDESWELL PARISH COUNCIL	page 18
PROJECT BAWDESWELL	page 21
BETTER BROADBAND	page 23
LEARNING GRANTS	page 25
REEPHAM LEARNING	page 27
RED SQUIRRELS	page 29
WENSUM BIRD SOCIETY	page 31
BENEFICE NEWS	page 32
FOXLEY CHURCH	page 33
BAWDESWELL CHURCH	page 34
RECTOR WRITES	page 35
CHURCH SERVICES	page 36

LETTERS

I wish to put the record straight as to **Adam's pit**.

Mrs Menzies in her letter in the December/January Reeve's Tale says that this was the pond for Park Farm.

Park Farm had a pond in the farm yard under where Bawdeswell Garage premises now are plus various other ponds most of which have since been filled in. Adams pit and also an area of land on Bawdeswell Heath was formerly County Surveyors land, meaning that materials for the maintenance of the highway were obtained from these sites. The ownership of these were passed from Breckland Council to the Parish Council during the late 1970s as far as I recall.

The land adjoining Adams Pit was part of the land belonging to Maytree Farm and was used to graze horses and cattle.

Robert Eglinton

Flower Arranging Classes have been arranged at 2pm at Bawdeswell Village Hall on the following Tuesday afternoons:-
Feb 28th, Mar 6th, 13th, 27th, April 17th & 24th, May 8th. *Sue Lilwall*

Sheringham Panto

With Christmas and the New Year now behind us, can I please reflect back to the Sheringham PANTO.

53 of us embarked on the coach at the Village Hall somewhat later than arranged much to the dissatisfaction of Marilyn. We finally arrived at Dave's Fish Bar, to be joined by Andy's family and Marion King's two friends for a supper complete with mushy peas, then on to the Panto. Good seats but a bit cramped.

Good fun was had by all with plenty of banter and the usual----HE'S BEHIND YOU - ---- OH NO HE IS'NT etc etc

Back on the coach for a safe journey back home,

With various negotiations and other generous donations a total of £ 228.00 was raised which I am pleased to say will go to the New Village Hall Fund

Once again thanks to you all for supporting me and watch this space for a possible Summer trip.

Alan Collier

Looking for a babysitter?

My name is Paige Roberts and I am 14. I live in Bawdeswell and I help out at Seekers. I am available evenings and weekends and charge £2.50 an hour. References available. Please contact me on 688876 or 07878138860 Thank you!

TREES WANTED

Do you have old or rotten trees, perhaps wind fallen or broken ones, I will cut and remove free of charge, anything considered. Call D J Taylor: 07981 792790 evenings or weekends

FEBRUARY 2012 DIARY

Thu 2 nd	Book Club meets at Old Workhouse Bar, 8pm
Sat 4 th	Seekers, 10am Bawdeswell Village Hall
Mon 6 th	Bawdeswell Parish Council Meeting 7.30pm
Thu 9 th	Craft Group at Bawdeswell Village Hall 2pm Foxley Parish Council Meeting 7.30pm
Mon 13 th	BECK WI meet at Sparham Old School Room 7.30pm
Wed 15 th	Coffee Morning Foxley Village Hall, 10.30am
13 th – 17 th	Half Term Activities at Bawdeswell Village Hall, <i>see page 8</i>
Mon 20 th	Bawdeswell Village Hall Meeting
Thu 23 rd	Craft Group at Bawdeswell Village Hall 2pm
Sat 25 th	Project Bawdeswell Meeting 10am
Tue 28 th	Lent Course begins 2pm at Lyng Rectory Flower Arranging Class at Bawdeswell Village Hall 2pm

Foxley Village Hall – regular events

Exercise Classes
Short Mat Bowls
Bridge
Table Tennis

Every Tuesday morning at 9.30am.
Every Monday & Friday Evening
Tuesday evening 7.15pm
Wednesday evening.

Bawdeswell Village Hall - regular events

*Parish Council
*Village Hall Committee
*Table Tennis
Countrysiders
WeightWatchers
Running Club
Little Monkeys (Parent & Toddler Group) JayCee
Bridge Club
Pilates
Seekers
Semitone Singers Children's Choir
Ladies Craft Group

Normally 1st Monday of Month (not Jan or Aug)
Normally 3rd Monday of Month
Every Monday
Every other Wednesday in term time
Thursdays 6.15pm
Thursdays 8pm
Fridays 9.15am
Fridays 2.15pm
Fridays 7pm
1st Saturday of month
every Wednesday 4.30pm in Term Time
2nd & 4th Wednesday each month 2pm

Bawdeswell Church

ICENI Choir Practice

Wednesdays 7.30pm

Chaucer's reeve has a tale to tell on Bawdeswell's new sign.

By MARK TWEEDIE

Geoffrey Chaucer's reeve, from his Canterbury Tales, Roman roadbuilders and the ill-fated crew of an RAF aircraft have all played their part in shaping the history of the Norfolk village of Bawdeswell.



And all are commemorated in some way on its new sign, which brought a bold dash of colour to a grey, foggy morning as it was unveiled on Sunday, November 20, 2011.

Wind, rain and frost had taken their toll on the old sign, installed some 30 years ago, so the parish council ordered a replacement that incorporated a few extra reminders of episodes from Bawdeswell's past.

The rural scene has been crafted and painted in Norfolk-sourced English oak by husband-and-wife team Kelvin and Mary Thatcher, of Croxton Hamlet, near Fulmodeston.

The design depicts Osewald the Reeve on horseback - Chaucer recounts how this pilgrim was of Northfolk ... byside a toun men callen Baldeswelle - a well, the crossroads where a Roman road between ancient Durobrivae, in the Fens, Smallburgh and maybe Caister met the route from Norwich to Fakenham, the old 1845 Norman-revival parish church and a Mosquito aeroplane. The last two are connected: in late-1944, one such aircraft of RAF 608 Squadron based at Downham Market crashed in the village and destroyed All Saints, killing both crew.

The unveiling was performed by a group reflecting all ages of the community, ranging from children to 93-year-old Irene Ames, whose home too was damaged by the stricken plane. She said of the new sign: I think it is lovely - I am very pleasantly surprised.

SANTA VISITS BAWDESWELL



Once again a very enjoyable evening was had when Santa visited Bawdeswell in his sleigh and accompanied the carol singers around the village. Mulled Wine, Mince Pies and other refreshments were available in the Village Hall where the children were able to visit Santa in his Grotto.

However, none of this would have been possible without the band of helpers who worked tirelessly to make the evening a success.

A big thank you to the Carol Singers and Helpers without whom we could not organize such an event.

Just over £200 was raised for the New Village Hall Fund.

Tony & Chris Hood



Bawdeswell Village hall can be hired by both parishioners and non residents. You can also hire tables and chairs for your own events. There are a number of regular activities at the hall – see events page at front of magazine for details. Bookings are now being taken for 2012. We also now have a smaller meeting room available for hire.

HIRE CHARGES for Main Building (Meeting Room is 50% of charge)

Charge includes ALL heating costs

Period	(1) Standard and Commercial Hire Charge	(2) Parishioners Private Hires other than in (3)	(3) Parishioners - Hires ending by 5.30pm on Weekdays #
Minimum (2 hrs)	£20	£16	£10
4 Hours	£32	£27	£16
6 Hours	£48	£37.50	£25
8 Hours	£52.50	£42.50	£30
10 Hours	£62.50	£47.50	£40
12 Hours	£72.50	£52.50	n/a
Full Day	£90	£65	n/a
Saturday Evening minimum	£50	£40	n/a

Excludes Bank & Public Holidays. Other hours charged pro rata.

A refundable cash deposit of £50 is required (may be reduced or waived at the discretion of the Booking Clerk). **YOU MUST BE AGED 21 OR OVER TO HIRE THE HALL.**

**Birthday Party 4hr Special for children of Primary School age and younger.
Monday to Friday £15. Saturday or Sunday - £20, £25 deposit (Not Saturday Evening)**

For availability, more details and a booking form please contact: - *David Cockburn*
Tel: (01362) 688749, Mobile: 07778 835 254, Email: BawdeswellVH@aol.com

See also our website at – <http://bawdeswellvillagehall.norfolkparishes.gov.uk/>

Village Hall Committee Meetings are held on the 3rd Monday of every month and all are welcome to attend. If you would like to help run the hall or would like any other information please come along to the meeting.

* * * * *



BRIDGE CLUB

The JayCee Bridge Club holds weekly sessions at both Foxley and Bawdeswell Village Halls. We meet at Foxley Village Hall every Tuesday evening at 7.15p.m. for a 7.30p.m. start and at Bawdeswell Village Hall every Friday afternoon at 2.15p.m. for a 2.30p.m. start.

For information (or to confirm a session is to take place) contact Roger Fryatt on 01362 688627 or Patsy Catchpole on 01362 688352.



Bawdeswell Village Cinema Presents

Our film distributor has now imposed a minimum charge which makes the showing of their films, at a minimum of £120, too costly in Bawdeswell. In order to continue bringing more recent films to the village we are now offering local businesses the opportunity to sponsor a film. Sponsors would be recognised by advertising and if desired the showing of a video advert prior to the film. Please contact us for further information.

Our next film is planned for

Saturday 10th March 2012 - doors open 7pm

Free Entry Film [15]

We regret that, due to other commitments & hall bookings, there will be no film in February

Our film nights for the rest of 2012 will normally be on the second Saturday of the month but see the Reeve's Tale for confirmation as there will not be a film every month.

All at Bawdeswell Village Hall – Doors open 7pm,
films start at approx 7.30pm

Free Entry

The Bar/Cafe will be open for refreshments

Call 01362 688749 for more information or
see web site <http://bag.norfolkparishes.gov.uk/>



Bawdeswell Activities Group

Half Term at the Hall – February 13th to 17th

Details of any activities will be posted on our website at <http://bag.norfolkparishes.gov.uk/>, on posters at the village hall and leaflets through the school.

Table Tennis – fun evenings - NOW EVERY MONDAY

We now play table tennis every Monday evening, singles and doubles. It is great fun. If anyone is interested, do come along and join us. Entrance fee is **£2 adult and £1 under 16** to cover the cost of hiring the hall. Anyone under 16 must be accompanied by an adult. For more information please contact Janet on (01362) 688749.

Running Club

The Running Club has commenced Circuit training on Thursday evenings between 8-9pm - anyone is welcome, only £2 and all profit goes to the NEW HALL FUND. Running outside will probably re-commence in April/May 2012. Contact Fel on 07957254503 for more information.

Bawdeswell Events

You can now see future events for Bawdeswell and some for surrounding villages on Facebook www.facebook.com/pages/Bawdeswell-Norfolk/116544105086866?sk=events or on the calendar on the Project Bawdeswell Website <http://projectbawdeswell.norfolkparishes.gov.uk/> or if you have a Google account you can link direct to the Bawdeswell calendar

Some special dates for 2012 that you might want to put in your diary are

Sunday April 15th – Titanic Day - 100th Anniversary of the disaster – Following a Titanic breakfast at 9am served by the BAGY team, there will be various displays etc during the rest of the day and you can stay for as little or as much as you like. Full details of the event and timetable will be posted in the village hall. If you would like to help with this event please contact David on 688749. Call Fel on 01362 688876 or 07957254503 to book breakfast. Raising funds for the play area and new hall fund.

Sunday May 6th – Tractor Run and BAGY Breakfast – Breakfast 8.30 to 11.30am - Tractor Run – leaves Village Hall at 10am - returning around 4pm
See lots of different types of tractors and trailers from yesteryear.
Call Tony Hood for further information on 688218 - profits to New Hall Fund
Breakfast -The best Full English, Sunday papers, At Table service.
All profits to the play area. Call Fel on 01362 688876 or 07957254503 to book

Sunday 24th June – Bawdeswell Village Fete – profits to various village charities

Sunday September 2nd – Bawdeswell Extravaganza – bigger and better than 2011

See The Reeve's Tale in 2012 for more details or call Tony Hood for further information on 688218 - profits to New Hall Fund



BAWDESWELL PRIMARY SCHOOL

The Federation celebrated Christmas by holding a joint 'A School Nativity' performance at Reepham High School during December. The whole thing ran extremely well and was thoroughly enjoyed by children and adults from both schools. Thank you to Ms Laband for writing the play and pulling it all together on the night.

Update on Headteacher

We still have Mrs Rose in place as Acting Headteacher and the Governor's have again placed an advert for a permanent Head during January. We hope to have some good news for you next month regarding a full time appointment.

School Vacancy

We have a vacancy for a Mid-day Supervisor in school. We are looking for someone who is happy to work at lunchtimes between 11.45am and 1.10pm approx. The hours are 7.25 per week. Hourly rate is £6.29. If you like working with children and are interested in this vacancy, please contact Mrs Lambert at the school on 01362 688282 or e mail office@bawdeswell.norfolk.sch.uk for an application pack. An enhanced CRB will be required before employment commences and are looking for someone to start as soon as possible.

Dates for Spring & Summer Terms

Spring Term

4th Jan 2012 to 30th March 2012

Half Term 13th to 17th February
Easter Holiday – 2nd April to 13th April

Summer Term

16th April to 20th July

Half Term – 4th to 8th June
May Day 7th May

<p>ANNE WEITZ GTCL LTCL Dip Ed (Lond) Member EPTA Tuition in Piano ABRSM exams Beginners to Advanced <i>All ages welcome</i></p> <p>01362 688466</p>	<p><i>Josephine Tym</i> MCSP Chartered Physiotherapist <small>Registered member of the Health Professional Council</small></p> <p>Tel: (01362) Bawdeswell 688281</p> <p>For assessment and treatment at home or in treatment room</p> <p>Jordans Jordan Green Whitwell Norwich NR10 4RQ</p> 		
 <p>Kerri's Farmhouse Pine Open Every Day Quality Range of Gifts & Accessories Hand waxed Furniture Old Style Tea Shop Reepham Station 01603 871187 Traffic Free Cycle Hire</p> <p>www.kerrispinefurniture.co.uk</p>	<p>G.A.EGMORE & PARTNERS <i>of Sparham</i></p> <p>Coal, Smokeless fuels, Pre-packed & Barbecue fuels Also parts for Solid Fuel Fires <i>Regular Deliveries 5 days a week in all areas. Quality, Service, Reliability.</i></p>  <p>PHONE 01362 688270</p>		
<p><i>Rose Cottage Therapies</i> Clinic suite in tranquil setting</p> <p>Reflexology * Reiki Aromatherapy * Massage Rosetone Facial Massage (the natural facelift)</p> <p>Registered Practitioner 15 yrs experience</p> <table border="1"> <tbody> <tr> <td data-bbox="1299 1133 1433 1324"> <p>Special interests:- Back Pain Depression Menopause Stress</p> </td> <td data-bbox="1433 1133 1635 1324"> <p>Also:- Teaching Reiki Master Meditation Days Handmade Skincare Range Free Skincare Advice Gift Vouchers Gift Packs</p> </td> </tr> </tbody> </table> <p>Sue Whiting MAR, IEB, RASA, CThA Tel: 01362 688664</p>	<p>Special interests:- Back Pain Depression Menopause Stress</p>	<p>Also:- Teaching Reiki Master Meditation Days Handmade Skincare Range Free Skincare Advice Gift Vouchers Gift Packs</p>	 <p>Remind your body how it should feel</p> <ul style="list-style-type: none"> • Aromatherapy • Massage • Hot Stone Therapy • Indian Head Massage <p>To book an appointment at Dragonfly Therapy Room OR in the comfort of your own home call</p> <p>Bawdeswell (01362) 688746 Mobile 07786 628309</p> <p>Carmen Taylor CThA Holistic Massage Therapist</p>
<p>Special interests:- Back Pain Depression Menopause Stress</p>	<p>Also:- Teaching Reiki Master Meditation Days Handmade Skincare Range Free Skincare Advice Gift Vouchers Gift Packs</p>		

The Friends of Bawdeswell Church planned Events 2012

- March Sat 17th** Quiz Night & supper 7pm village hall
- July Sun 15th** Festival Players present *Richard the Third* in front of the church
- Sept 14th, 15th 16th** Bawdeswell Flower festival - including Friday preview, Sat evening concert
- October Sat 20th** Bawdeswell Harvest Supper 7pm Village Hall
- December Sun 9th** Bawdeswell Family Christmas Concert 4pm in the church
- December Sat 15th** Bawdeswell Christmas Fair & Wreath Sale 10am - 4pm in the church



Bawdeswell Craft Group

We have enjoyed our first meeting of 2012 after a break for the whole of December. Although we did have a Craft Stall at the Wreath Sale Day in the Church in December, when we also sold some of Nicholas Ward's lovely wooden bowls and pots etc. and in all raised just over £100, which was shared between the Friends of the Church and the New Hall Fund. We will continue to meet on the 2nd and 4th Thursday afternoons of the month at 2 pm, which means our next meeting will be on 26th January and our February meetings on the 9th and 23rd of the month. We welcome new members and feel free to come along and bring your own work or just join us for a cup of tea and a chat. Enquiries Marietta Menzies 688 400.



Domestic plumbing services

All repairs and renewals.
Anglian Water Approved.



Charles Seaman

Interior/Exterior Painter and
Decorator

Tel: (01362) 688309

2 Bell Close, Bawdeswell,
Dereham, NR20 4SL



Vaughan Lapwood ADI

*Patience and Friendly
Driving Tuition*

**Tel: 01362 690049
Mobile 07831 102311**

TELEPHONE BAWDESWELL
688211

J.A. BAKER
FAMILY BUTCHER
BAWDESWELL, Norfolk

ORDERS TAKEN FOR ALL DEEP-FREEZE
MEATS

**Locally based accountancy and
tax service**



Self-Assessment Tax Returns
Annual Accounts
BOOK KEEPING
VAT Returns

Committed to providing a prompt professional service at a sensible price. For a free initial consultation at a time to suit you contact

David Pooley ACIB

Tel/Fax **01603 866542** Mobile **0790 508 6960**

e-mail: davidpooley@certax.co.uk

ABILITY

DRIVER TRAINING

YOUR LOCAL DRIVING INSTRUCTOR

EXCELLENT PASS RATE

LYNG (01603) 870276

www.abilitydrivertraining.co.uk

Maxine Denmark

Garden Designer & Gardener

Need a full design service for your whole garden or just a planting plan for a tricky spot in the garden?

- Site survey
- Design Concept Plan
- Planting Plan
- Construction & Maintenance



01362 683693



Lilwall's Farm Pork
HOG ROASTS

for your function

50 - 500 people

Ring for a quotation

(01362) 688098 07867 987787

Farm Reared British Pigs

www.hogroastnorfolk.com



BOOKCLUB

The Book Club meets in the Workhouse Bar on the first Thursday of every month at the new time of 8pm. Most of our books are borrowed from the library so there is not the expense of buying new books each month. New members are always welcome.

Enquires: Marietta Menzies 01362 688400. 'The Room' by Emma Donoghue will be the book for discussion at our February meeting.

Freedom by Jonathan Franzen

This is a lengthy novel that has won international critical acclaim. It's the story of an American family that dips and dives through modern culture. A lavishly entertaining account of a family at war with itself. A book that moves at an alarming pace: mid-life crises aplenty, the striking problems of climate warming, the effect of corporate management on everyday life, and all with a heavy salt of intrigue. What more could you want?

The book itself caused a lengthy and lively discussion. Some found the emphasis on dialogue excessive. Several found the characters to be basically unpleasant people. But we believe most recognised the book as a modern masterpiece. Perhaps the measure of all great literature is that the characters stay with you long after the book has been read. Franzen's enormous skill as a novelist certainly meets that criteria.

PG and CG

FOXLEY VILLAGE HALL
COFFEE MORNING
Wednesday, 15th February
Everybody welcome
Bawdeswell & Foxley

The Mermaid Inn *Firelogs-Extra Hot*

Burn similar to smokeless coal, 100% recycled
Ideal in Multi Fuel /Log Burners & Open Fires

10 kg Easy to Handle Clean Bags

FREE delivery 20 plus sacks, 15 mile radius of Elsing or
COLLECTION from Mermaid Inn, Elsing, opening Hours ONLY
Singles £4.75 x 5 = £4.25 per sack x 10 sacks £4.00
x 20 sacks £3.75 Pallet quantities available

Come and feel the warmth call us on 01362 637640

Grab a bag and grab a pint Real ale, Great food, Dog Friendly, WI FI

Full information from info@elsingmermaidinn.co.uk
www.elsingmermaidinn.co.uk facebook:- Mermaid Inn Elsing

REEPHAM HOME HARDWARE
3 TOWNSEND CORNER, REEPHAM, NORWICH
Tel. 01603 871064

Paint Tinting Mixing System • CALOR GAS Stockists • Hardware
Full Gardening Range • Pet Food • Timber • Electrical • Tools
Shingle • Cycle Parts • Houseware

Mon - Sat 9 - 5 DEEP CLEAN CARPET CLEANER FOR HIRE LOCAL DELIVERIES Sun 10 - 12.30

For all your Home & Garden Maintenance contact

J. D. Home & Garden Services
Professional & Reliable Workmanship

- ❖ Garden Fencing Supplied & Erected
 - ❖ Patio & Paving Laid
 - ❖ Sheds Supplied & Erected
 - ❖ Replacement External Doors & Windows
- ❖ Conservatories Supplied & Erected
 - ❖ Floor and Wall Tiling
 - ❖ All forms of Domestic Carpentry

No Job Too Small - Free Estimates
Call Jason Dobbs on 01362 - 688824 or
07780 - 988628
www.jdhomeandgarden.com





BECK W. I.

Soon after arriving and greeting W.I. friends for our January meeting, we were pleasantly surprised to be asked to drink a toast to Margaret Roy. As Margaret will be celebrating a special birthday later this month we were only too pleased to raise our glasses and wish her a wonderful memorable day with her family.

The next item that evening was no surprise because we already knew that Ernie Richard would be talking to us about Hello Dolly. This he did with his usual enthusiasm and we learned that although starting life as a play, Hello Dolly was not made into a musical until 1964. Ernie went on to tell us how the story unfolds, playing tapes to remind us of some of the songs – ‘Put on your Sunday Clothes’, ‘It only takes a Moment’ and, of course, the catchy ‘Hello Dolly’. Thank you very much Ernie. The Beck theatregoers will certainly enjoy their visit to Norwich’s Theatre Royal to see this fascinating musical.

After our coffee/Gill’s cake and shortbread/tea break, we were able to give Aleathia our choice of Resolution from the six given in the recent edition of W.I. Life, the most popular to be put to the vote at the May 2012 NFWI A.G.M. The exhibit – a doll – was won by Gill, second Jennifer. Jennifer won the raffle.

Aleathia mentioned several forthcoming events including ‘Women Reaching Women’, Friday 9th March at U.E.A. Price £5. (See Page 12 of the January Gazette.) Aleathia told us that any unwanted scarves taken to Federation Office by the end of February will be sold to help funds.

Our committee members have come up with A Plan. In addition to our usual meetings they feel it would be interesting for us to meet up each month to ‘do something different’. This month of course it is the visit to the Theatre. In February (27th) the venue is Mattishall’s Café Verde. Lunch at 12.30. Hope there’s lots of interest.

Our February meeting is on the 13th when our speaker is Angela Thompson. Angela’s subject is the Alexander Technique for Health and Posture. The exhibit is a Childhood Photo. Hope to see you all.

Mary Humphrey

THE BECK WI (Bawdeswell, Sparham, Foxley)
meets in the Old School Room, Sparham

*You are welcome to come along and join us. More details from:
Carole 688569 or Christine 688494*

FOXLEY PARISH COUNCIL
MINUTES OF MEETING HELD ON THE 8TH DECEMBER IN THE VILLAGE
HALL AT 7.30PM

Present: Councillors Harvey (Chairman) JH, Mears (Vice-Chairman) NM, Hatch NH, Barrett DB, Mr G Bambridge (District Councillor) Mrs E Buck (Clerk) and 3 Parishioners.

Apologies: None

Minutes of last meeting: The minutes of the last Parish Council meeting held on the 6th of October were agreed and signed.

Declaration of Interest: None

Ongoing Issues From Previous Meeting:

Neighbourhood Watch Scheme The Clerk had a meeting with PCSO Jade Fuller on Tuesday 6th December to look into re-starting the scheme, the Clerk will be distributing forms to every house hold in Foxley to see if any residents are interested for the scheme to be restarted. Homewatch operates through a network of district associations and schemes that are run by the residents and are supported by the police.

Are set up using guidelines approved by Norfolk Constabulary

Are maintained by a Co-ordinator and sometimes a small committee who manage the scheme and liaise with police and partners

Take steps to prevent crime and anti-social behaviour.

To get started again Foxley needs a co-ordinator so if you would be willing to help please contact the Parish Clerk, Emma Buck, on 688299.

Highways The Clerk had a meeting with Richard Fletcher from Highways to discuss the possibility of having two grit bins and this has been approved, one being placed at the cross roads of Mill Road, West Foxley and the other next to the bus shelter, East Foxley. They will be secured in place as soon as possible.

A parishioner has enquired as to the possibility of having a mobile speed indicator situated on the A1067. Clerk to contact Highways.

Village Sign

The Clerk met with Kelvin Thatcher who refurbished the Bawdeswell Sign. He was kind enough to give a quotation. A decision for this will be made at the next meeting in February.

Correspondence

Code of Conduct Training

Councillor Dennis Barrett has kindly volunteered to undertake a course & will be contacting Susan Allen at Breckland to book a session to go through the basics of the current Code of Conduct.

Finance

Summary of Accounts The financial report for the period 6th October to 5th December were agreed and signed.

Clerk's Expenses Clerk's expenses approved Cheque no:100342 £15.95

Clerk's Salary This item will be discussed and resolved, based on latest workload figures etc, at the next meeting in February.

Planning

3PL/2011/0968/F Moor Farm PP granted with 8 conditions.

Village Matters

Following a letter from Norfolk Accident Rescue Service requesting a donation from the Parish Council, the Parish Council voted unanimously that ,while recognising it's good work, a donation to this charity would not be made on this occasion.

The Clerk will contact the Village Hall Committee to discuss the possibility of having a joint celebration for the Queen's Jubilee celebrations next year.

Village Hall Roof

The possibility of having solar panels placed on the roof of the village hall to save money in the long run was discussed, but the time scale given for implementation was considered to be too short.

War Memorial

A parishioner has kindly given up their own time to keep the Foxley War Memorial clean and tidy, but feels that more help from the Foxley residents is needed, if anyone is willing to help please contact the Clerk on 688299.

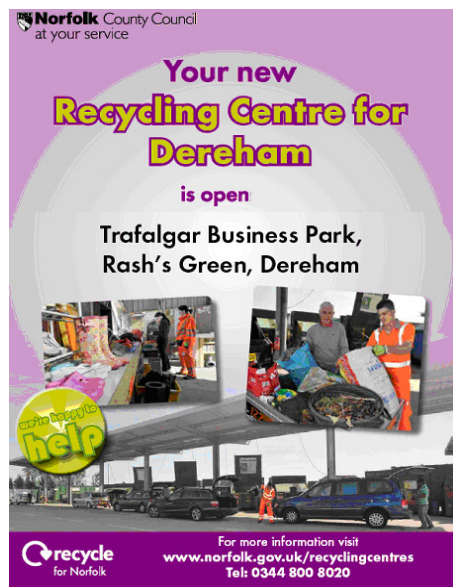
Date of the next meeting

Thursday 9th February at 7.30pm

Date of the Annual Parish Meeting, Annual Parish Council Meeting and first Parish Council meeting of the new year will be held Thursday 10th May at 7.30pm in the Village Hall.

Contact Details for Parish Clerk-Emma Buck

Tel:01362688299/07771654277, Email:foxleyemma@aol.com



DIRECTIONS: Turn into ROYS at the traffic lights in Yaxham Road, then turn Left under the A47, follow the signs. Exit is on the Watton Road.

BAWDESWELL PARISH COUNCIL

DIGEST OF MEETING ON 5TH DECEMBER 2011

Present: Councillors Shannon, Mason, Beane, Kirby, Mallen, McColville, Mr G Bambridge (District Councillor), Mrs C Boer (Clerk), and 1 parishioner.

Visit by Local PCSO

The Chairman welcomed PCSO Jade Fuller to the meeting and thanked her for arriving early to give an opportunity to parishioners to share any community concerns in confidence, even though no parishioners had attended. The Parish Council expressed its concerns about the recent level of anti-social behaviour and increased crime rate in Bawdeswell and invited PCSO Fuller to discuss how the Parish Council might help alleviate the problem. PCSO Fuller confirmed that a survey of crime figures for Bawdeswell since July 2011 did reveal an increase in crime/anti-social behaviour calls to Dereham SNT. She suggested a crime prevention meeting for the whole village but, on the interest shown to date, the Parish Council felt that this would be poorly attended. PCSO Fuller therefore agreed to produce some Norfolk Police leaflets highlighting the need for parishioners to be more aware about securing their properties etc. PCSO Fuller also noted the lack of CCTV and lighting around the village hall and felt that these would help reduce the anti-social behaviour in this area. The Parish Council therefore agreed to ask the Village Hall Committee to consider the need to install CCTV. Noting that there was no active Home Watch/Neighbourhood Watch within the village, PCSO Fuller felt that the Parish Council should try and restart this scheme and recruit new volunteers. PCSO Fuller also emphasised the continued need for parishioners to report any incidents to the Dereham Safer Neighbourhood Team, so these can be investigated immediately and the Police can respond accordingly.

Ongoing Issues from Previous Meetings

Adams Pit: All the major work related to the refurbishment of Adams Pit has now been concluded with the recent planting by volunteers of hedging and trees purchased from Felthorpe Nursery. Some additional water plants etc will be planted next Spring. The Parish Council would like to take this opportunity to publish a vote of thanks to all the volunteers who have helped with this project.

Allotments: The Chairman confirmed that work is in progress to produce a draft business plan for the creation of the community allotment resource to help negotiate the acquisition of land and possible funding grants..

Village Sign: The new village sign was unveiled successfully on 20th Nov 2011, in the presence of local children and parishioners. The event was also covered by the EDP and Dereham & Fakenham Times. Mr Kelvin Thatcher, the artist, has subsequently removed the sign to correct a minor problem. The old village sign has been stored in a safe and secure site and minor restoration on this sign will commence shortly.

Planning

PA 3PL/2011/0708/F Heath Cottage, Dereham Rd: Mrs Wragg, Planning Enforcement Officer at Breckland District Council, has conducted a site inspection and

confirmed that the building works do differ from the approved plans. Mrs Wragg has subsequently spoken to the agent who will be carrying out a survey with a view to submitting amended drawings shortly thereafter.

PA 3PL/2011/1212/F Land west of Heath Cottage, Dereham Rd (resubmission of 2 low cost starter homes): The Parish Council agreed to reiterate the objections raised in connection with the original planning application.

PA 3PL/2011/1049/F 31 Reepham Road (erect 2.2kW PV ground mounted array (NE corner of garden & 4 sqm 1675kWh roof-mounted solar thermal system): planning permission granted with 6 conditions.

Any Other Business of Interest to Parishioners

Flexibus: The Parish Council have been advised that NCC representatives were due to meet with Foulsham Parish Council in December to discuss the feeder scheme again. If possible, NCC would still like to link a Foulsham feeder service (planned to meet the X29 service in Bawdeswell) with a Bawdeswell flexibus service to Dereham. It is hoped that a NCC representative will attend the February Parish Council meeting to discuss the outcome of the Foulsham meeting and hence the future of the Bawdeswell flexibus scheme.

Precept 2012-2013: The budget for the forthcoming financial year was discussed and it was agreed that the Precept for 2012-2013 be set at £12,000. In setting the Precept, the Parish Council wished to reassure parishioners that it had done its utmost to continue supporting village projects and keep increases to an absolute minimum, bearing in mind the current economic climate.

Home Watch/Neighbourhood Watch Volunteers Needed -

If you would like to become involved with this initiative or would like more information please contact the Parish Clerk

Claire Boer 01362 688415/07877955745 Email cboer.pariahclerk@fsmail.net

The Art & Craft of Gardening

Tel:01362 688977 Email: shelagh.ashe@googlemail.com

Website: www.fraxina.co.uk

Shelagh Ashe
Garden Consultancy

BD FENCING & LANDSCAPING

All Types of Fencing/Gates & Landscaping

Public Liability Insured. Call for Free Estimates & Friendly Advice

TEL: 01362 683774 MOB: 07733216578

INDOOR HEATED SWIMMING POOL & SPA

MOOR FARM FOXLEY

Available for hire for your private use. Tel: 01362 688523

NORFOLK COUNTRY MAIDS

Domestic Cleaning and Ironing Services

For all your household chores

Various packages available

All cleaners fully insured

Whatever your requirements

Weekly, Monthly or one-off cleans

We can help!

Check out our website: www.norfolkcountrymaids.co.uk

or call 07880 605 180

philip jacobs

Oil Fired Boiler Servicing, Repair & Breakdowns

Friendly reliable local service

01362 688398

Mobile 07887 902815

NiC

C & G EMC



We ended the 2011 on a high when just before Christmas we had formal notification from Breckland of a grant for 30% of the architect's fee, an amount of just under £8,000. As soon as we have raised the rest of the money needed (and we are nearly there) we will give the go ahead to the architects. They will then proceed to draw up plans suitable for a builder to quote against.

Lots more has been happening in the last two months too, discussions have continued with Breckland Planning and the final plans have been altered a little to meet their ideas, which we have found a positive experience although it has meant some more work and expense. The final business plan is just about complete too.

Luckily we have had the support of some professionals in the village who have given their time for free, for which we are most grateful. One clever young man has done some computer imagining and produced this wonderful picture of what the new hall should look like in situ. Something will be done about the puddles too!

As we are finding there are a lot of stages to this project and the one we are focussing on for 2012 is obtaining grants. We have had a workshop type meeting to set out priorities, and plan to identify large capital grant givers and make applications to them in the first instance. Our next meeting will be held on Saturday 25th February in the village hall at 10.00 a.m. We are always happy to welcome anyone who would like to be involved in this major project for the village.



Here is how the proposed new village hall would look when built.
This image has been prepared for us by Simon Lindley

Bawdeswell Garage & MOT Centre

MOT's Class IV & Class VII
MOT's for Motorcycles Class I & II
Repairs and Servicing for all makes and models of Vehicles
Recovery of Vehicles (24 hour)
State of the art Diagnostic Equipment
Fully Qualified Technicians
Friendly & Knowledgeable Staff - Quality Workmanship Assured
NEW: COURTESY CARS AVAILABLE – small charge

Mon - Fri : 8am - 6pm Sat : 8am - 12pm

**Park Farm Buildings Dereham Road
Bawdeswell
Dereham NR20 4AA**

Tel: 01362 688731 Fax : 01362 688943

www.bawdeswellgarage.co.uk



BRECKLAND CARE AT HOME

**COMMUNITY INTEREST COMPANY
(NOT FOR PROFIT)**

**High quality home care to enable
people to stay in their own homes**

Breckland Care at Home, at Elmham Surgery, aims to provide high quality home care services to individuals or groups in the local community. Our aim is to enable people to stay in their own homes and remain independent.

We are registered with the Care Quality Commission and Norfolk County Council. All our staff have enhanced CRB checks.

For more information please contact Helen Simpson or Karen Howarth on 01362 668215. www.brecklandcareathome.co.uk

Better Broadband for Norfolk Information Sheet 3 (11th January 2012)

In May 2011 Norfolk County Council was successful in its bid to secure Government funding to help provide improved broadband speeds and access across Norfolk. We want to keep the people of Norfolk informed and updated about the project and the work that is underway to provide better broadband services in the county. Please visit www.norfolk.gov.uk/sayyesnorfolk for more information on the project.

What's happened since the last update?

We've launched our 'Say Yes to Better Broadband' campaign which means residents and businesses in Norfolk can now register their interest in receiving the broadband services provided by the Better Broadband for Norfolk project.

Why do you need to run a campaign to encourage people to register their interest?

We know that large areas of the county lack access to even a basic broadband service but in order to attract competitive bids from a number of telecoms partners we need to show them what the actual demand in Norfolk is – not just where broadband services are currently lacking. The more people who register their interest now, the more attractive Norfolk will be to potential private sector partners and this means we will be in a stronger position to provide superfast broadband in as many areas as possible.

I'm not sure if I want to receive broadband through the Better Broadband for Norfolk project.

You don't have to be sure at this stage. When you register there is no obligation to buy a broadband service – you will simply be helping to demonstrate to potential private sector partners that demand for better broadband exists.

How do I register my interest?

There are a number of ways. You can fill in the form – there is one for residents and one for businesses – online at the campaign website www.norfolk.gov.uk/sayyesnorfolk where you can also find a lot more information about the campaign. Hard copies of the forms will be available in all Norfolk County Council libraries and mobile libraries or you can register over the phone by calling the council's customer service centre on 0344 800 8023.

When do I need to register my interest by?

You will need to register your interest no later than 31st March 2012.

Is there anything else I can do to help the Say Yes campaign?

Absolutely! You can help get the message out there that we need people to sign up now in order to get the best deal for Norfolk. Tell your friends, family and neighbours. Campaign posters are available on the website – print one off and put it on a community noticeboard!

If you require further information please telephone Norfolk County Council on 0344 800 8020.

B B BUILDING SERVICES

* All General House Repairs *

- * Alterations * Extensions * Renovations * Restorations * Conversions *
- * Brick & Flint Work * Carpentry * Gutter Repairs & Replacement *
- * External Groundwork * Drainage & Pipe Work * Digger Work *

All Insurance Work Undertaken

- * Fully Insured * Free No Obligation Quote *

For an outstanding service at a realistic price call Brian
01362 688531 or 07901 805595

B B LANDSCAPING

- * Patios * Paving * Garden Walls * Brick Work * Steps * Brick Weave * Driveways *
- * Paths * Gates * Fencing * Decorative Ironwork * Raised Beds * Gravel Boards *
- * Lawns – Seed or Turf * Hedge & Tree Planting * Hedge & Tree Cutting & Clearance *
- * Garden Clearance * Drainage & Pipe Work * Mini Digger Work *
- * Redesign All Outdoor Areas *

- * Fully Insured * Free No Obligation Quote *

For an outstanding service at a realistic price call Brian
01362 688531 or 07901 805595

GP LANDSCAPING Norfolk

Making you look good from the outside!

Fencing Specialists for all your domestic, commercial and security needs.

Using the best quality materials that last the longest!

Also undertaking all hard landscaping:

**Paths • Patios • Paving • Driveways • Turf • Brickwork
Decking • Garden Clearance • Ponds • Pergola's**

Locally based, fully insured, portfolio on request.
Free quotations, CSCS Holders (Health and Safety)



Tel Paul on: 07971 771204 Evening: 01362 688159

www.gplandscapingnorfolk.co.uk



Learning grants for Norfolk carers

- Are you a carer living in Norfolk?
- Are you aged over 18?
- Have you been providing unpaid help and support for a year or more to a relative, friend, partner or child who cannot manage because of illness, age or frailty?

If the above apply to you, you may be able to obtain a grant of up to £200 in one year to fund Learning Course fees. Courses can be distance learning, provided at a local college, adult education centre or other centre. They can be for just a half-day or day, several sessions, a term or a year.

Learning Course fees could include:

- Leisure Courses e.g. creative writing, music lessons.
- Sports & Fitness e.g. swimming lessons, fitness classes.
- Employment-related courses e.g. computer skills.
- Complementary therapies courses e.g. aromatherapy, massage classes.
- Academic courses e.g. GCSE's, A Levels.
- Training to help you continue in your caring role e.g. lifting and handling.
- Condition specific training e.g. dealing with challenging behaviour.
- Adult Education Courses.
- Driving Lessons – strictly limited availability.

To find out more, please contact us on 01603 787111 or email acn@ageuknorfolk.org.uk

Norfolk County Council & The Alzheimer's Society Cafe Care

Cafe Care is a free cafe for Carers of people with dementia held at Fakenham Library on the first Wednesday of each month 2.30 - 4.30 p.m.

Cafe Care offers a range of free services including:

- Opportunity to meet other Carers of people with dementia
- Professional information and advice about dementia and caring
- Relaxation treatments
- Refreshments



*Les Blotinières
Dissé-sous-Le-Lude*

Les Blotinières has been tastefully renovated and can comfortably sleep 18 people and can cater for those with limited mobility. There are three large terraces overlooking the valley and a lower terrace with a heated 106y5m swimming pool. Dissé-sous-Le-Lude nestles between Le Mans, Angers, Tours and Saumur; the area is famous for its chateaux, gardens, food, wine, rivers, golf courses, water sports, car racing and cycling. It is perfect for a family get together or just friends.

Chateau Le Lude

*Available from mid July 2012.
Please contact Michelle on
01362 688761 for more details.*

All Welcome...

Wensum Valley Hotel

Bar and Restaurant Meals served all day, every day

FORTHCOMING EVENTS

QUIZ NIGHTS
Fridays: Jan 27th, Feb 24th, Mar 23rd
£6.50 pp including Basket Meal

Saturday 11th February
Valentines Dinner Dance
3 Course & Coffee £28.50

Sunday 19th February
Wedding Show - Free Entry

Live Music Nights Every month
from £12.00 inc Carvery

Carvery served Sunday 12 - 3pm
with Pianist
Fri/Sat Evening 6.30-9.30pm

Weddings Receptions and
Civil Ceremonies

Functions and Conference Rooms

Fully Equipped Gym, Swimming
Pool, Sauna, Steam Room, Jacuzzi

Big Screen TV, Snooker & Pool

Golf Memberships, Green Fees
and Society Days

Beech Avenue, Taverham, Norwich, Norfolk, NR8 6HP
Tel: 01603 261012 Fax: 01603 261664
www.wensumvalleyhotel.co.uk enqs@wensumvalleyhotel.co.uk



Car Maintenance for Women

Run by women for women!

Learn the basics of car maintenance including how to change a tyre, check oil and water and tyre pressure and have the opportunity to ask any questions.

Caroline Lake is your tutor, visit her website www.carolinescars.co.uk

We will be running 2 identical sessions, choose which time is more suitable for you

When Sat March 10th 10am-12pm or Wed March 21st 4pm-6pm

Where Reepham High School

Cost £15 per person per session

Growing your own food – Making a start

The course will aim to provide beginners and novices with basic advice and support in starting to grow their own food or to build on early experience. The course will provide a mixture of teaching, discussion, group and individual activities over six evenings. Handouts and signposts to sources of information (including websites etc.) will be provided. A range of relevant books for reference and resources will be provided and some free, ongoing support is also available.

Your tutor is Nigel Boldero

Brief course overview

Week 1	Starting out
Week 2	Soil, pests and diseases
Week 3	From seed to store – fruit and herbs
Week 4	from seed to store – vegetables
Week 5	Early evening visit to local vegetable garden
Week 6	Setting out

Where Reepham College
When Wed 22nd, 29th February Wed 7th, 14th, 21st, 28th March

Time 7pm-9pm

Cost £39 pp for 6 week introductory course
Concessions £29 (for those claiming State Pension or Job Seekers Allowance)

To book a place on a course please contact
Reepham Learning Community 01603 308133
Sandie Athow 07796698127

E mail RLC@reephamhigh.com

For further details of our other courses, please visit

www.reephamlearningcommunity.co.uk

Moor Farm Stable Cottages

Moor Farm, Foxley, Dereham, Norfolk, NR20 4QP

Tel: (01362) 688523 (24hr answerphone)
688393 (evenings)

*A Courtyard of 8
2/3 Bedroomed Converted Stables
together with Individual Cottages.*

All fully equipped and Centrally heated.

Long or Short Term Lets

OPEN ALL YEAR

Visit our Website: www.moorfarmstablecottages.co.uk

DAVIS EGG SALES

MOOR FARM, FOXLEY, DEREHAM, NORFOLK, NR20 4QN

Tel: (01362) 688523



Your Local Egg Supplier

Pre-packs - Keyes Trays
Shrink wrapped - Free Range

Red squirrel enclosures opened at Themelthorpe



Red squirrels used to be a common sight in Norfolk's woodland

Two new breeding enclosures, designed to help increase the UK's red squirrel population, have opened locally.

The enclosures by the Countryside Restoration Trust (CRT) have been built at its Mayfields

smallholding at Themelthorpe near Foxley Wood..

Trust chairman Robin Page said: "Red squirrel is an endangered species and we want to help it survive. It was once very, very common in Norfolk. We hear so much about saving tigers and rhinos and all sorts of things in different parts of the world - quite exotic. We think a red squirrel is exotic and we want to save our precious, iconic red squirrel."

Members of the public can view the squirrels at the Mayfields site.

'Squirrel desert'

Red squirrels were once a common site in British woodland but they are now mainly confined to northern pine forests and islands such as Brownsea in Poole Harbour and Anglesey.

David Stapleford, from the East Anglian Red Squirrel breeding programme, said: "This new location will help our breeding population considerably and it's important we now have the support of the CRT.

"Much to our surprise the reds we've paired produced a litter last year - unusual when they were so young - so we're hoping to expect two litters this year which on average would mean six kittens."

The young squirrels from Mayfields are most likely to become part of a red squirrel reintroduction programme in Anglesey.



www.orangefoxelectrical.co.uk

**Complete Installation and Maintenance Services
for Retail, Commercial and Domestic Customers**

01362 688997 01603 743373

24 Hour Emergency Call Out



Need help with your tax return,
book-keeping, accounts, VAT or payroll?
I can provide you with a local, personal service at competitive rates.

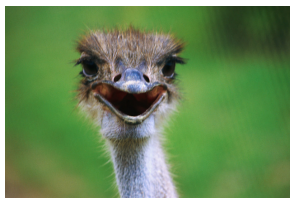
Aleathia Mann ~ Chartered Accountant
Springwood, Church Lane, Sparham.
01362 688543:07887 523640

SEAN KNOWLES BUILDER

All types of Brickwork, Flintwork,
Extensions, Renovations and Repairs
Experienced, fully qualified and insured

01362 688718
07818 294282
2 Dereham Road, Bawdeswell





Wensum Valley Birdwatching Society

Only one event in December, our Christmas social, a get-together at Weston Longville Village Hall, with a 'bring your own' buffet, raffle and a quiz or two to stretch the mind. The buffet always exceed expectations and this is an informal gathering that allows members to get acquainted - always a very popular event.

The year 2012: Ray Gribble has put together an excellent programme of events for 2012. Lots of interesting talks about locations near and far, from Foxley Woods to Ethiopia and the Galapagos Islands. Also, artist Steven Cale will be talking about 'The Art of Birds'. Our field trips will include visits to Holkham, Hickling, Foxley Wood and the Nth Norfolk Coast, we will also be looking for Nightjars and witnessing the 'Dawn Chorus'. You can meet members of the society at the conservation events 'Wild about Wensum' at Pensthorpe and 'Wild about Norfolk' at Easton college. Also we are doing a 'BioBlitz' at the Dinosaur park at Weston Longville. Full details can be found on our webpage. **Please note** that you do not have to be a member of the Society to take part in any of our activities. All are welcome, especially beginners, but be warned that our events are addictive and most first timers subsequently join the Society, which has nearly 150 members and still growing. Joining the society is easy, just come along to a meeting or complete the form on our webpage.

Dates for February: Thursday 16th, at Weston Longville Village Hall, Samantha Lee of the Wildfowl and Wetlands Trust will talking about Welney's Wintering Wildfowl, starts at 7.30 p.m. On Saturday 25th we will be visiting the North Norfolk Coast.

Colin Wright [01603 740548] www.wvbs.co.uk

Benefice News and Events



The new service pattern is set and began on the 1st of January. It will not change this year! The first three Sundays of each month will have services in each parish's own church. The fourth Sunday will be a One More step Service on the existing rota basis and whenever there is a fifth Sunday that too will be on a rota. Do please look out for the service times and the type of service it is on the church notice boards or in the magazines.

The Rector will be holding a Lent course this year on a Tuesday afternoon at the Rectory from 2 -3.30 beginning on 28th February until 27th March. The course will be in the form of a discussion on the sermon of the previous Deanery Lent Evensong which is to be based on the book, "Love Unknown" by Ruth Burrows. This book is the Archbishop of Canterbury's 'Book for Lent'.

The next men's breakfast will be held on sat 25th February in Foxley village hall. Invitations will be going out soon. If you do not receive one and would like to come along please contact your BMG rep;

Foxley - Monica Hatch, Lyng - Jennifer Abram/Carole Jackson/Chris Woor
Elsing - Fran Neale, Bawdeswell and Bylaugh - Sandi Taylor
Sparham - Fiona Sayer / Clare Hill

S.T.

WOMEN'S WORLD DAY OF PRAYER

On Friday, 2nd March 2012 women from around the world will celebrate the Women's World Day of Prayer. The service has been written by the women of Malaysia, and the theme this year is 'LET JUSTICE PREVAIL'

Malaysia is a country of contrasts lying north of the Equator in S.E.Asia. Since the Japanese invasion in WW2, the country has worked hard to recover.

But women are still discriminated against especially in education and employment.

Voices for truth and justice have been silenced by corruption and greed.

You are cordially invited .to join us in this moving service in ALL SAINTS CHURCH, BAWDESWELL AT 2pm on Friday, 2nd March, when the Speaker will be Mrs Ruth Sanson.

Everyone will be very welcome, and please join us for refreshments afterwards.

Mrs Christina Smithson, 3 Wensum Road, Lyng NR9 5RJ Tel: 01603 872411

THE CHILDREN'S SOCIETY

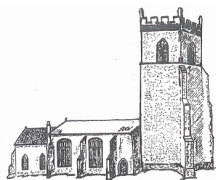
Unlike the previous year, there were no problems with the weather for December's "Box-Opening Coffee Morning" at Foxley Lodge. We eventually trudged off to the Bank with £1300-43 from the boxes - another record! The coffee & Christine's delicious scones, our home - made "goodies", bric-a-brac & the Draw made £528-45, generously "match-funded" by Barclay's Bank's Charity Scheme, as in recent years;

this when you add £145 from Lyng's Christingle, plus donations of £50-00 reach a total of £2552-33, also a bit more than last year. So thank-you so much to all who helped or contributed in any way!

You may have noticed before Christmas much publicity about the Society's work with young "runaways" – children & teenagers who escape from unimaginably awful treatment at home, only to be predated upon on the streets – drugs, prostitution & so on, not to mention hunger, no shelter, no roof over their heads. Their lives are blighted, no effort could be too great to rescue them & guide them to stable & civilized lives.

Should you feel willing to give a home to a "House-Box", into which you can pop spare change or regular coins do give me a call. I will, as usual, mention the "re-cycling centre" in our carport. You can leave your unwanted household goods (not electrical), clothes, books, toys & so on, or we will collect them. Mostly they boost our stocks at the Fakenham shop, sometimes the one in Dereham. Another reminder, fabric items clearly past their best can be put into a bag labelled "Rags" and they, too, will earn some money. Shopping in charity shops is becoming popular in these difficult times, so do visit them & find a few bargains – I've even heard of a family who made a pact to buy all their Christmas presents there!

Diana Harvey, FLEBBS Benefice Co-ordinator. 01362 688 650.



St. Thomas' Foxley

What a pleasure it was to gather in our newly renovated church for the Carol Service on the 18th. December – immaculate plaster replacing the crumbling mess on the walls and fresh lime-wash. How grateful we are to Tony & Christine Rushbrook! We held the service in the Chancel, because we had no expectations of many attending and it would be warmer with the new heating system. Well, what a surprise! We were jammed in like sardines & the singing was the heartiest we have heard in Foxley Church for a long while. The Rector led the service, John Fletcher was at the organ & we read the traditional lessons from the King James Bible, appropriate, this year being the 400th anniversary of its publication.

The tree was in a new position greeting us as we entered by the main door, holly & ivy decoratively arranged, candles glowing everywhere, and we were so pleased that our young helpers, Georgia & Douglas were on hand to help again. Another pleasure, we ended up enjoying mulled wine, mince pies & gingerbreads in our new social area at the front of the nave, with much chatter & good humour.

Rather fewer attended the service of Holy Communion on Christmas Day, due partly to family responsibilities away from home – so many families don't live near each other these days. Anyway, the witness of St. Thomas' was maintained on that very special day & the readings, carols and decorations enjoyed again.

We look forward to more updating & improvements to our precious sacred inheritance in the year to come & are thankful for all the help we have been given.

Diana Harvey P.C.C. Secretary.



ALL SAINTS CHURCH, BAWDESWELL

November and December were, as usual, busy months.

After much planning, we relaunched the GiG on the Sunday next before Advent to take advantage of the musical opportunities afforded by the Worship Group and to try incorporating other ways of expressing our worship such as brief dramatic pieces. The new format seems to have received general support and we are now planning for the months of 2012 when the GiG will be on the second Sunday of each month. The GiG service is particularly for children but everyone is welcome.

On Advent Sunday, members of the Icenii choir again led a beautiful Advent Carol service. The readings and carols lead us towards the Christmas season and was much enjoyed by those present. Such a service still seems to be unfamiliar but is well worth looking out for in December this year.

The children from the school came to church for their carol service at the end of term. It is always a pleasure to see them and our thanks to Annabelle, headteacher, for bringing them and encouraging them. They sound better every year! It is a tight squeeze to get all the children and their parents in - upstairs and downstairs absolutely full and standing. It was nice to see some recent leavers (now at High School) looking in. The crèche for the younger siblings was much appreciated - their absence kept the noise level down so the children's songs and readings could be heard properly.

We held a Carol Service at which the children from Seekers presented a nativity play entitled "On Christmas night ...". We were pleased to welcome 59 to that service and 60 to the GiG on Christmas Day when we had a number of musical contributions from young people in addition to the Worship Group. At each of those services we had collections for particular charities and we were able to send £220.33 to St Martin's Housing Trust and £311.87 to EACH at Quidenham. The First Mass of Christmas was held on Christmas Eve (at 9pm but it has that Midnight Mass feel to it) with an attendance of 35 so our total Christmas attendance was nearly 100.

W.M.

The F.L.E.B.B.S Benefice
 Rector: The Revd David Head Tel: 01603 872381
 Email: david@davidhead.plus.com

From the Rector

Dear Everybody, hello again.

This month Lent starts. It's a time when Christians traditionally look hard and long at their past actions. They take time to examine their motives and their way of life more deeply.

Some people aren't sorry for the wrong things that they have done until they are caught, or punished. Others are sorry when they see the effect of their actions on other people. Sometimes people say that they shouldn't be blamed for the things they have done, because they *meant* no harm.

There are three levels of intention that make us culpable under the law of this land: negligence, recklessness, and wilful behaviour. Interestingly, they nearly mirror the three descriptions in the Anglican confession: "we have sinned...through negligence, through weakness, through our own deliberate fault".

But whatever the level of culpability, the principle behind them is the same. We are not only responsible for our actions, we are responsible for the *foreseeable results* of our actions. We are deemed to have intended the natural consequences of what we choose to do.

There is a commonplace in psychology; the "Freudian slip" is not a mistake, but us showing our true intentions. You know how irritating it was when you were young, and in the playground a child said something spiteful to you, and then said: "It was only a joke. Can't you take a joke?" You knew that at some level they meant to be unkind.

In our society, the Occupy movement is based on the idea that the economic situation in which we now are is the *foreseeable result* of people acting negligently. And if results happen that we didn't foresee, then we have to ask ourselves: "why did I not think this might happen?"

Sometimes we all need to look at the effects of our actions, and think back. "Did I mean this to happen?" "Did I make it happen?"

God bless you David Head

February 2012

Date	05/02	12/02	19/02	26/02
Season	The Third Sunday before Lent	The Second Sunday before Lent	The Sunday next before Lent	The First Sunday of Lent
Foxley	17.30 EP DH	08.00 HC DH	10.30 MP CW	
Lyng	9.00 HC2 DH	10.30 W&P CW	15.30 EP DH	10.30 OMS DH
Elsing	10.30 HC TC	09.00 HC DH	10.30 W&P CW	
Bawdeswell	10.30 W&P CW 12.00 HC DH	10.30 GiG Team	10.30 WP CW/DH	
Bylaugh		9.00 MP CW		9.00 HC DH
Sparham	10.30 OASIS Team +DH	10.30 Confirmation DH	9.00 HC DH	

Holy Communion every Thursday morning at Lyng at 9.30am

DEANERY LENT SERVICES
ASH WEDNESDAY – 22nd Feb 7.30pm Foulsham
Lent 1 Sunday 26th Feb 4pm St Michael's Reepham