

## Film Programme

**Saturday 13th April 7pm**

**Quartet (12A)**

Well what a cast! Maggie Smith, Tom Courtenay, Billy Connolly, Pauline Collins and Michael Gambon. Would Verdi turn in his grave if he thought he was remembered in such a way? You may have already seen this but come and join 'The Sprockets' for a great evening.

**Saturday 11th May 7pm**

**The Sapphires (PG)**

**Saturday 8th June 7pm**

**Lincoln (12A)**

**Saturday 6th\* July 7pm**

**Hitchcock (12A)**

\*NB – 1<sup>st</sup> Saturday

**Saturday 10th August 7pm**

**Hyde Park On The Hudson (12A)**

**More Dates for your diary (Subject to Confirmation)**

**Saturdays - 14<sup>th</sup> September, 12<sup>th</sup> October, 9<sup>th</sup> November, 14<sup>th</sup> December**

**All At Bawdeswell Village Hall**

**Doors open 7.00 pm for 7:30 pm start.**

**The Bar/Cafe will be open for refreshments for all films**

### **Ticket Prices**

**Adults £4, Over 60 £3.50, U12 £3, Family (2A+2C) £12 + £1 each extra child**

**Special discount for Students (12/18) £2**

**Annual Season Ticket also available at £36 - equivalent to £3 or less per film**

**Call 01362 688749 or email [BawdeswellVillageCinema@gmail.com](mailto:BawdeswellVillageCinema@gmail.com) for further information.**

**Send us your email to get regular updates and take part in choosing our films.**

## CONTENTS

NOTICE BOARD	page 2
EVENTS DIARY	page 3
SENIORS' CLUB	page 4
CINEMA NEWS	page 5
BAWDESWELL VILLAGE HALL	page 7
CRAFT GROUP	page 9
BOOK CLUB	page 11
TRACTOR RUN	page 13
FRIENDS OF BAWDESWELL CHURCH	page 15
WI	page 17
BAWDESWELL PARISH COUNCIL	page 18
FOOTPATHS TO BAWDESWELL HEATH	page 21
BINTREE BOWLS CLUB	page 21
CLUB PAGE	page 23
CHILDREN'S SUMMER CLUB	page 25
LOCAL WEATHER	page 27
BAWDESWELL FESTIVAL	page 28
LEGAL CORNER	page 29
WENSUM BIRD SOCIETY	page 30
REEPHAM LEARNING	page 31
ELSING EVENTS	page 32
CHURCH PAGES	33 - 36



**TUESDAY & FRIDAY  
MORNINGS  
9am - Noon  
in  
BAWDESWELL CHURCH**

**Martin McColls**

6am – 10pm

Sun 7am -10pm

**J. Baker Butcher**

7.30am – 5pm Mon Tu Thu Fri

7.30am – 1pm Wed. & Sat.

**Garden Centre**

*Summertime:*

9am – 5.30pm

Sun 10.30am - 4.30pm

**Bluebell Square Shops**

As above but closed Mondays

**Cover:**

*Spring at Last! Bawdeswell*

**COPY FOR THE May 2013**

**ISSUE BY 15<sup>th</sup> April PLEASE**

**Editors:**

Robin Taylor

Angela Shannon

Stewart Cormie

e-mail : [magazine@bawdeswell.net](mailto:magazine@bawdeswell.net)

## NOTICE BOARD

### Flower Arranging Classes at Bawdeswell Village Hall.

Tuesdays      April 16<sup>th</sup> & 23<sup>rd</sup>  
                      May 13<sup>th</sup> & 21<sup>st</sup>  
                      Workshop July 1<sup>st</sup>.

Details from *Sue Lilwall* 01363 688240.

Just a reminder that there is still time to register your interest in the Breckland Council's **BIG SWITCH AND SAVE** campaign to help with lowering the cost of electricity (See your Breckland Voice magazine page 5). Closing date is 8<sup>th</sup> April.

To register your interest, with no commitment, go to: [www.bigswitchandsave.co.uk](http://www.bigswitchandsave.co.uk)

or ring 01362 656870

*Carole Nottage*

## Coffee Morning Foxley Village Hall



**Wed 17<sup>th</sup> April at 10.30 am**  
**All are welcome for coffee & mardle**

## APRIL 2013 DIARY

Mon 1 <sup>st</sup>	Bawdeswell Parish Council meeting 7.30pm - Portakabin
Thu 4 <sup>th</sup>	Book Club meeting at The Old Workhouse Bar 8pm
Sat 6 <sup>th</sup>	Craft Market, Elsing Village Hall, 10-12
Sun 7 <sup>th</sup>	Bawdeswell Church Annual Parish Meeting, after 10.30am Service
Mon 8 <sup>th</sup>	WI at Sparham Old Schoolroom, Japanese fabric folding 7.30pm
Thu 11 <sup>th</sup>	Craft Group at Bawdeswell Village Hall 2pm
Sat 13 <sup>th</sup>	Bawdeswell Cinema: <i>Quartet</i> 7pm Bintree Bowls Club Quiz & Chips, Foxley Village Hall 7pm
Tue 16 <sup>th</sup>	Flower Arranging Class at Bawdeswell Village Hall 2pm
Wed 17 <sup>th</sup>	Mobile Library in Bawdeswell 10am – 11.30am Coffee Morning Foxley Village Hall 10.30am
Thu 18 <sup>th</sup>	Craft Group at Bawdeswell Village Hall 2pm
Sat 20 <sup>th</sup>	Megson Folk Group, 8pm Elsing Village Hall
Tue 23 <sup>rd</sup>	Flower Arranging Class at Bawdeswell Village Hall 2pm
Thu 25 <sup>th</sup>	Craft Group at Bawdeswell Village Hall 2pm
Sat 27 <sup>th</sup>	Bawdeswell Village Hall Meeting 10.00am

### Foxley Village Hall – regular events

Exercise Classes  
 Short Mat Bowls  
 Bridge  
 Table Tennis

Every Tuesday morning at 9.30am.  
 Every Monday & Friday Evening  
 Tuesday evening 7.15pm  
 Wednesday evening.

### Bawdeswell Village Hall - regular events

\*Parish Council  
 \*Village Hall Committee  
 \*Table Tennis  
 Countrysiders  
 WeightWatchers  
 Running Club  
 Little Monkeys (Parent & Toddler Group)  
 JayCee Bridge Club  
 Pilates  
 Seekers  
 Zumba

Normally 1<sup>st</sup> Monday of Month (not Jan or Aug)  
 Normally last Saturday of Month  
 Every Monday  
 Every other Wednesday in term time  
 Thursdays 6.15pm  
 Thursdays 8pm  
 Fridays 9.15am  
 Fridays 2.15pm  
 Fridays 7pm  
 1st Saturday of month  
 Mon morning & Wed evening

### Bawdeswell Church – regular events

ICENI Choir meet Wednesday evenings 7.30pm



## **SENIORS AND OVER** **50'S CLUB**

**Thank you to everyone who came along to our first meeting. There were over 50 people and it was good to see so many smiling faces in the hall. At our next meeting we will be announcing our FAB new Club name!**

**The next meeting is at  
Bawdeswell Village Hall:**

**Wednesday 1st May at 10.30am**

**Tea, coffee and cake will be on sale and there will be a raffle. In addition we will be presenting:**

**Alan Smith of Swanton Morley  
with his 'Norfolk Stories'  
which is sure to be entertaining and  
very funny!**

**Hope to see you there!!**

We had a great attendance for the showing of **ARGO** at Bawdeswell Village Cinema. With great building of suspense, this film told the 'true story' (Hollywood version) of the rescuing of 6 American nationals from the home of the Canadian Ambassador during the siege of the American Embassy in Iran in 1979. As usual, Hollywood seems to ignore or as in this case, deny any British involvement. It seemed that the plan was not thought to be viable but due to outstanding nerve and courage, it was amazingly successful. It won three OSCARs and BAFTAs including both 'Best Film' categories showing us that Ben Affleck as Director has further talents we have not seen before.

Our next film in the Village Hall is **QUARTET 13th April 7:00 for 7:30 start**. A really great British comedy cast, (Maggie Smith, Tom Courtenay, Billy Connolly, Pauline Collins and Michael Gambon) this is the kind of comedy that only the British can do. This is a first major Director role for Dustin Hoffman. Based in a home for the mature, it has great fun with the problems of getting on in years interlinked with 'Oh God, not you' statements of 'friends' meeting again after many years. A true 'feel good' film. A must to see, laugh a minute film, so put it in your diary **NOW – 13<sup>th</sup> April!!**

**Please note – We have a new Student price of £2.00 for those from 12 to 18 years so join us, even if we aren't COOL you will see some great films.**

We would like to thank 'The Sprockets' for voting for the Summer Season. We have had to add some Extra films to fit them all in. Voting was very close.

So come join us and receive a warm welcome, just check on the film rating for those of you who are younger. *If you are local and can't get to us, let us know and we will see if we can help.*

We have refreshments and a bar.

For further information contact our **new email address**

[BawdeswellVillageCinema@gmail.com](mailto:BawdeswellVillageCinema@gmail.com)

or call David or Janet on 01362 688749.

## Bawdeswell Garage & MOT Centre

MOT's Class IV & Class VII

MOT's for Motorcycles Class I & II

**Repairs and Servicing for all makes and models of Vehicles**

Recovery of Vehicles (24 hour)

State of the art Diagnostic Equipment

Fully Qualified Technicians

Friendly & Knowledgeable Staff - Quality Workmanship Assured

*NEW*: COURTESY CARS AVAILABLE – small charge

**Mon - Fri : 8am - 6pm Sat : 8am - 12pm**

**Park Farm Buildings Dereham Road  
Bawdeswell**

**Dereham NR20 4AA**

**Tel: 01362 688731** Fax : 01362 688943

[www.bawdeswellgarage.co.uk](http://www.bawdeswellgarage.co.uk)



REMINDER TO EVERYONE – all our meetings are open to attendance from the people of Bawdeswell, and our Committee meetings for the year will take place on Saturday mornings at 10.00 am in the village hall on - 27<sup>th</sup> April, 25<sup>th</sup> May plus AGM, 29<sup>th</sup> June, 27<sup>th</sup> July, 31<sup>st</sup> August, 28<sup>th</sup> September, 26<sup>th</sup> October, 23<sup>rd</sup> November and even 28<sup>th</sup> December! It is always good to welcome others.

At our last meeting we agreed the new Constitution, which has since been agreed by the Parish Council and now will be lodged with the Charities' Commission. That was a significant goal for the Village Hall Charity and puts us in line with current legislation.

Lighting has been installed to cover the car park which will improve the experience for everyone using it in the winter months. The outside lighting around the hall is also being left on, controlled by a time switch, to improve security.

The group working on the 2<sup>nd</sup> stage of the lottery application are continuing to meet weekly to complete it and it will be finalised around Easter in time to meet the deadline, by which time it will be 50+ pages long. It will be Easter eggs all round when they have achieved that! Those of us who buy lottery tickets each week and groan when we realise we have not been successful, most hope that those weekly outlays will come back to us in the guise of a new Village Hall meeting the needs of the community!  
MM

### Important Contacts:

John Mallen - Booking Clerk 688627 [villagehall@bawdeswell.net](mailto:villagehall@bawdeswell.net)  
or [jm67y@mallenj.fsnet.co.uk](mailto:jm67y@mallenj.fsnet.co.uk) .

Les Beach - Caretaker 688 869.



Amanda Nelson DipCFHP MPSPract

## FOOT HEALTH PRACTITIONER Mobile Foot Care Service

**In Dereham, Fakenham  
& Surrounding Area.  
Tel 07788 427656**

Email [healthyhappyfeet22@gmail.com](mailto:healthyhappyfeet22@gmail.com)

Nail Trimming Corn Removal Verruca Treatment  
Hard Skin reduction Diabetic Foot Care Ingrown Toenail  
Fungal Infection Medical Pedicure. (medi-pedi) Home Visits

[www.healthyhappyfeet.co.uk](http://www.healthyhappyfeet.co.uk)

DEDICATED TO THE CARE OF YOUR FEET.



**30<sup>th</sup>**  
**ANNIVERSARY**

**Saturday, 1st  
June 2013**

**KATIE RUSHWORTH** from the BBC series *Love Your Garden* doing planting demonstrations from 11am.

**Rollo the Entertainer** from 10am – 4pm for Punch & Judy and magic shows.

Live music from the **Nene Valley Jazz Band** – live demonstrations – bouncy castle and slide for the children.



The Bawdeswell Garden Centre, Norwich Road, Bawdeswell, Dereham Norfolk NR20 4RZ

The  
Reeve's  
Larder

Millennium  
Garden

BLUEBELL  
SQUARE

Reeve's  
Parlour  
Restaurant

Children's  
Play Area



Tel. 01362 688 387



[www.bawdeswellgardencentre.co.uk](http://www.bawdeswellgardencentre.co.uk)

Visit our Garden Centre for  
all your gardening needs



## **BRECKLAND CARE AT HOME COMMUNITY INTEREST COMPANY (CIC)**

**High quality home care to enable people to stay  
in their own homes**

We are based at Elmham Surgery and cover areas between, Litcham, Fakenham, Reepham, Mattishall and Toftwood.

We can support you with your personal needs such as preparing meals, washing, dressing etc. We can assist with domestic chores, shopping, trips and appointments and provide companionship. We can provide as little or as much help as you feel necessary.

We are registered with the Care Quality Commission and Norfolk County Council. All our staff have Enhanced CRB checks.

As a CIC all funds are reinvested into the company and community projects.

**We are also recruiting new staff as we expand.  
Excellent rates of pay. Mileage paid, uniform provided.**

For more information please contact Helen Simpson on 01362 668215  
or visit our website [www.brecklandcareathome.co.uk](http://www.brecklandcareathome.co.uk)



## **BAWDESWELL CRAFT GROUP**

Work continues on our own projects and making goods for sale later in the year. We are very grateful for the donations we have received in the last month from local people and hope to put them to good use to make more products for sale - so a **big thank you** from us all. We do have fun and fellowship as we discuss various issues – particularly the species from Mars!! Around Valentine's Day we were chatting about the motivation for a marriage proposal when one is eighty+ which caused lots of merriment, but we do cover some serious subjects too. We enjoy our afternoons together and are supportive of one another. Our next meetings will be on 28<sup>th</sup> March, 11<sup>th</sup> and 25<sup>th</sup> April at 2.00 pm in the Village Hall. We welcome new members - bring your own work and come and share an afternoon with us. We will arrange transport if necessary. Enquiries: Marietta Menzies 688 400.

## **The Festival Players - A MIDSUMMER NIGHT'S DREAM –**

### **Summer Tour 2013 \***

Shakespeare's wonderful fantasy comedy has always been a firm favourite for open-air production. As in the Bard's day, we will be performing with an all-male company of skilled professional actors, and invite you to share in the colour, poetry, and magical mayhem. Summer fun for the whole family.

**\* Visiting BAWDESWELL on Saturday 13<sup>th</sup> July**

**More Details on**

[www.bawdeswell2013festival.org.uk](http://www.bawdeswell2013festival.org.uk)



## INDOOR HEATED SWIMMING POOL & SPA

MOOR FARM FOXLEY

Available for hire for your private use. Tel: 01362 688523

## NORFOLK COUNTRY MAIDS

*Domestic Cleaning and Ironing Services*

For all your household chores  
Various packages available  
All cleaners fully insured  
Whatever your requirements  
Weekly, Monthly or one-off cleans

**We can help!**

Check out our website: [www.norfolkcountrymaids.co.uk](http://www.norfolkcountrymaids.co.uk)

**or call 07880 605 180**

## philip jacobs

Oil Fired Boiler Servicing, Repair & Breakdowns

*Friendly reliable local service*

01362 688398 Mobile 07887 902815

NiC

C & G EMC

## Reepham homehardware

3 TOWNSEND COURT REEPHAM NR10 4LD

TEL. 01603 871064

[www.reephamhomehardware.co.uk](http://www.reephamhomehardware.co.uk)

Dulux Paint Mixing System    Color Gas    Hardware    Gardening    Timber  
Electrical Tools    Shingle    Pet Housewares    Carpet Cleaner Hire  
Local Deliveries

Open Mon-Fri 9.00-5.30

Sat 9.00-5.00 Sun 10.00-12.30

## TREES WANTED

Do you have old or rotten trees, perhaps wind fallen or broken ones,  
I will cut and remove free of charge, anything considered.

Call D J Taylor: 07981 792790 evenings or weekends



## BOOK CLUB

### Lady Chatterley's Lover by D.H. Lawrence

Where shall I begin? Perhaps you're wondering why we decided to choose this as our month's reading choice. After all, it's been around for years, everyone knows about it. But even mentioning that this was our choice raised a few eyebrows and knowing looks. Strange when you think about it. Open a tabloid paper and what do you see? Browse the supermarket book shelves and copies of Fifty Shades of Grey are looking straight at you. No hint today of blank brown paper covers. And yet it seems it was still a rather 'racy' choice.

However I and others in the Book Club would like you to think again. Except I'd do more than that, I'd urge you to read or re-read it. To paraphrase an advert, it's worth it. So, more about the book. It threads different relationships against a world after the Great War. The aftermath meant that loves had been lost, bodies were incapacitated, class and gender divisions which had been surrendered in war-time were re-established. Indeed these great divides were heightened. Lives might have been turned upside down but a stiff upper lip was the order of the day. Alongside this, is an evocative background of poverty, failing industry and increasing unemployment. And of course, as everyone knows, Lawrence describes a love affair between a Lady and a Gamekeeper.

And that should have been that. It was just a story. And I'd say a well written story. But a book with descriptions of sex, especially bridging the great class divide, was just too hot to handle. It couldn't be printed and sold in England until 1960, after the notorious obscenity trial. And the trial did give us the immortal prosecution line – "Is it a book that you would have lying round your house? Is it a book that you would even let your wife or servants read?"

But now, more than fifty years on, we'd urge you to have another read of this book. Our discussion was lively with many views about the characters, the story and the ending. Perhaps the least positive were from readers who'd loved it the first time of reading, and were a little underwhelmed this time. But others, including me, thought it a Great Read!

So forget today's trashy sexy novels. Just try an erotic masterpiece. *Carolyn Good*

*The Book Club meets in the Workhouse Bar on the first Thursday of every month at 8pm. We mostly obtain books from the Library so there is not the expense of buying new books each month. We are reading Travels with my Aunt by Graham Green for discussion at our meeting on 4th April 2013. We will be reading the Seamus Heaney translation of Beowulf for discussion at our meeting on 2<sup>nd</sup> May. (A challenging literary endeavour we thought!) New members are always welcome. Enquiries: Marietta Menzies 01362 688 400.*

## Moor Farm Stable Cottages

Moor Farm, Foxley, Dereham, Norfolk, NR20 4QP

**Tel: (01362) 688523** (24hr answerphone)  
688393 (evenings)

*A Courtyard of 8  
2/3 Bedroomed Converted Stables  
together with Individual Cottages.*

***All fully equipped and Centrally heated.***

Long or Short Term Lets

**OPEN ALL YEAR**

Visit our Website: [www.moorfarmstablecottages.co.uk](http://www.moorfarmstablecottages.co.uk)

## DAVIS EGG SALES

MOOR FARM, FOXLEY, DEREHAM, NORFOLK, NR20 4QN

Tel: (01362) 688523



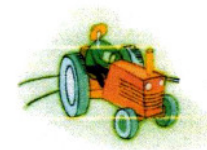
***Your Local Egg Supplier***

Pre-packs - Keyes Trays  
Shrink wrapped - Free Range

# Bawdeswell Tractor Road Run



Sunday  
12<sup>th</sup> May  
2013 10am



From Bawdeswell Village Hall through country lanes  
With lunch stop at the Green Man, Little Snoring (Lunch provided).

£10 per Tractor (inc driver) and £5 for each passenger  
N.B. Remember valid insurance needed  
Lorries/trailers to unload at 'Park Farm'

Full English Breakfast (£6) or Bacon Butty and Tea (£3) available  
from 8.30-9.30am – must be pre-booked and paid for.  
Afternoon tea and Refreshments will be provided at the Village Hall.

AN ENTRY FORM AND FURTHER INFORMATION  
CAN BE OBTAINED FROM  
Tony Hood, Robin Hill, Mill Road, Foxley, NR20 4QU  
Tel: 01362 688218



**LAST ENTRIES 1<sup>st</sup> MAY**





## GP LANDSCAPING Norfolk

*Making you look good from the outside!*

**Fencing Specialists for all your domestic, commercial and security needs.**

**Using the best quality materials that last the longest!**

Also undertaking all hard landscaping:

**Paths • Patios • Paving • Driveways • Turf • Brickwork  
Decking • Garden Clearance • Ponds • Pergola's**

Locally based, fully insured, portfolio on request.  
Free quotations, CSCS Holders (Health and Safety)



Tel Paul on: **07971 771204** Evening: **01362 688159**

**www.gplandscapingnorfolk.co.uk**

## B B BUILDING SERVICES

### \* All General House Repairs \*

- \* Alterations \* Extensions \* Renovations \* Restorations \* Conversions \*
- \* Brick & Flint Work \* Carpentry \* Gutter Repairs & Replacement \*
- \* External Groundwork \* Drainage & Pipe Work \* Digger Work \*

### All Insurance Work Undertaken

- \* Fully Insured \* Free No Obligation Quote \*

**For an outstanding service at a realistic price call Brian  
01362 688531 or 07901 805595**

## B B LANDSCAPING

- \* Patios \* Paving \* Garden Walls \* Brick Work \* Steps \* Brick Weave \* Driveways \*
- \* Paths \* Gates \* Fencing \* Decorative Ironwork \* Raised Beds \* Gravel Boards \*
- \* Lawns – Seed or Turf \* Hedge & Tree Planting \* Hedge & Tree Cutting & Clearance \*
- \* Garden Clearance \* Drainage & Pipe Work \* Mini Digger Work \*
- \* Redesign All Outdoor Areas \*

- \* Fully Insured \* Free No Obligation Quote \*

**For an outstanding service at a realistic price call Brian  
01362 688531 or 07901 805595**



## The Friends of Bawdeswell Church

*'protecting & enhancing this unique building for the future'*

### Past event(s)

- November 30<sup>th</sup> Flower Demonstration – Church **profit £643**
- December 9<sup>th</sup> Christmas Concert with Icení & Semi Tone Youth Choir **profit £304**
- December 15<sup>th</sup> Christmas Wreaths & Fair **profit £610**
- January 26<sup>th</sup> 100 club members drinks party **profit £1,300**
- February 23<sup>rd</sup> Race Night – Village Hall **profit c£570**

### Finance Report:

In 2012, the Friends raised just over **£5,300** from its fund raising events – this was slightly down on 2011 (£5,860).

Our donations to the Church (via the PCC) amounted to £6,160, some £300 more than the previous year. This slightly depleted our bank balances over the year and, at 31 Dec 12, we had about £4,300 in available assets, as opposed to £5,200 the previous year.

Nevertheless, the Friends are in a sound financial position to continue helping the Church, both with its day-to-day expenses (utilities, inspections, insurance etc) and also with the prospective capital outlay on structural repairs and improvements..

In 2013, so far, we have raised about £1,300 from 100 Club subscriptions and some £570 from the recent Race Night.

### **Next Event:**

May 11<sup>th</sup> 7pm 'An Evening with Ivor Novello'

### **Looking for a babysitter?**

My name is Paige Roberts and I am 15. I live in Bawdeswell and I help out at Seekers. I am available evenings and weekends and charge £3 an hour. References are available. Please contact me on 688876 or on my new mobile number 07881 912901. Thank you!



*Nicky P.*  
*Hair Design*  
*Fredance Hairdresser*  
*10 years experience*  
*covering all aspects of hairdressing*  
 For Appointments tel: 07799298020




OPENING 1<sup>st</sup> APRIL  
 Cassie's Dog Grooming  
 2 Dereham Road,  
 Bawdeswell  
 01362 688718  
 07775 444082  
*Over 10 years experience*  
 Collection & delivery service – first 3 miles FREE



 **BLOOMIN' HAIR**  
 YOUR LOCAL HAIR SALON FOR LADIES AND GENTS  
 IN BAWDESWELL GARDEN CENTRE  
 CUTS AND COLOURS  
 BLOW-DRY'S AND SETS  
 PERMS AND HI-LIGHTS ETC.  
 APPOINTMENTS NOT ALWAYS NEEDED  
 FOR APPOINTMENTS CALL:  
**01362 688588**

**SEAN KNOWLES  
 BUILDER**  
 All types of Brickwork, Flintwork,  
 Extensions, Repointing, Renovations and Repairs  
 Experienced, fully qualified and insured  
 01362 688718  
 07818 294282  
 2 Dereham Road, Bawdeswell



Need help with your tax return,  
 book-keeping, accounts, VAT or payroll?  
 I can provide you with a local, personal service at competitive  
 rates.  
 Aleathia Mann ~ Chartered Accountant  
 Springwood, Church Lane, Sparham.  
 01362 688543:07887 523640

  
**The BECK WI**  
 meets in Sparham Old School Room at 7.30pm  
*Come along and join us on*  
**Monday 8<sup>th</sup> April**  
 For a fascinating demonstration and hands-on evening  
 of Japanese fabric folding

We invite everyone to a delicious home-made  
**Soup & Pudding Lunch**  
 on Friday 17<sup>th</sup> May, 12 noon – 2.00pm  
 in Sparham Old School Room  
 Tickets £5  
**Contact: Aleathia** 01362 688543,  
**Jennifer** 01603 879452  
**Carole** 01362 688569, **Christine** 01362 688494

**BAWDESWELL PARISH COUNCIL**  
**DIGEST OF THE MEETING HELD ON MONDAY 4<sup>th</sup> MARCH 2013, at 7.30pm**

**Present:** Councillors: Shannon DS (Chairman), Mason WM (Vice Chairman), Beane CB, Kirby AK, Lilwall JL, Mallen JM, Mr G Bambridge (District Councillor) and Mrs H Moore (Clerk) + 5 parishioners.

**Ongoing Issues from Previous Meetings**

**Possible Pedestrian Access to Bawdeswell Heath:** DS congratulated AK on the hard work in producing the business cases. AK recommended that both proposals – one for a footpath alongside Billingford Road and one alongside Dereham Road – be put forward. However, at £1,500, the Billingford Road option is more achievable and a less costly option than the £7,700 required for Dereham Road. Match funding from NCC will be requested, whereby NCC fund 75% of the project; meaning that both options could cost the village £2,300, plus longer term maintenance and additional grass cutting costs. Adjacent landowners, Albanwise, will be approached to see what help could be offered towards maintenance. All agreed that AK should submit both proposals to Highways given that this incurs no cost, and the PC would discuss the future of the proposals once Highways had ruled on the submissions. AK will seek support for the proposals from GB, BB and the local MP.

**Possible Work on Churchyard trees:** The PCC is happy for the PC to carry out any necessary work. The Clerk will chase BDC via GB for a response to the application. Once BDC approval is achieved, voluntary help to carry out the work will be sought.

**Other Business of Interest to Parishioners**

**Proposal Received from Villagers for a Community Orchard:** Some villagers have proposed setting up a community orchard at the eastern end of the recreation ground. The detailed proposal is shown below. JL noted that the area suggested was used for car parking during some village events, and that the location for such an orchard should be considered within the VH Committee to ensure it accords with the new hall proposal and any future Project Bawdeswell plans. The proposers confirmed that space for parking would be allowed for within the tree planting scheme, and that the trees would provide shade for parishioners, as requested in the recent village survey. The PC agreed with the proposal in on the understanding that the proposers would consult with the Village Hall Committee and Project Bawdeswell to establish the best location for the trees. Once this was established, the proposers would need to produce a more detailed business plan, to include costs, funding and sourcing for the trees etc, for the PC to consider.

**Proposal from Bawdeswell Bowls Club for a Pavilion:** Since the proposal was first submitted to the Council, a further letter had been received which requested that the proposal will be held in abeyance until Stage 2 of the Lottery Application for the new Village Hall is complete.

**Fencing & Draft Constitution for the Village Hall:** JL noted the fundamental importance of an approved VH Constitution for the Lottery Stage 2 Application. The draft Constitution for discussion had been created from a Charity Commission model and therefore should not be amended lightly. As a result of the subsequent discussion, the PC agreed unanimously to thank WM for his valuable and time-consuming work on the issue, and to endorse the draft as requested, subject to an agreed clarification of the definition 'Permanent Endowment' within the document and a minor amendment to a point regarding 'Amendment of Trust Deed' to state that any such amendment would need approval of the PC as well as the Charity Commission. The PC also agreed that, if necessary, DS and WM as Chairman and Vice Chairman, respectively, would sign the final document.

DS had obtained quotes for fencing of the village hall driveway and car park. The quote has three sections:- 1) fencing to the side of the drive 2) the car park/field boundary and 3) the car park/play

area boundary. It was agreed to give the contractor approval to carry out the work detailed in item 1, to fence the side of the drive using posts and line wires for the cost of £650.00 + VAT. The other two sections of the quote will remain in abeyance until the full specifications of plans for the new Village Hall project are in place.

A quote had also been received from May Gurney for road planings to carry out temporary repairs to the car park, pending the creation of a new car park as part of the new VH project; the quote was £6 + VAT per tonne. It was proposed that this quote be approved and 40 tonnes be ordered initially, the cost being taken from the £1200 2013/14 Precept allocation to the Village Hall for the driveway fencing (£650.00) and car park maintenance. The residue of £310.00 would therefore be available to the VH Committee for hire of equipment etc for the repair. It was agreed that the Clerk write to May Gurney to take up the quote. Thanks were offered to Alan Collier for obtaining the quote.

**Village Hall Committee News:**

JL confirmed that an outside light on a timer and an external car park light are due to be fitted to the Village Hall. A security pen is also being used to mark items in the hall. Other security improvements are still being discussed. Rates to hire the hall are to be discussed at the next committee meeting. There has been a power issue due to water damage which is being dealt with by the caretaker. Upcoming events include the Village Festival and Rock on the Rec, which offer great fundraising opportunities for the new hall. There will be an open meeting on 26<sup>th</sup> March regarding the new hall plans.

The VH Committee requested that the PC agree in principle to take out of a loan and grant this money to the new hall project. If an amount of £50,000 were granted, the loan repayments would equate to what the PC normally allocates to the Village Hall within the annual precept, and the VH Committee would then fund its own maintenance. Any loan above £50,000 would require an increase in future precepts. A loan from the PC would be the last resort, but if the PC endorsed the idea in principle it would help Stage 2 of the Lottery Application. The PC agreed in principle to fund to the best of its ability the new hall project, subject to further definition of amounts required.

**Paradise Road Sewers:** JM – reported the continuing sewer problems in Paradise Road. Despite assurances from Anglian Water, the situation is not being monitored, and residents are continuing to have sewage spilling into their gardens and have to clean out drains themselves. The Clerk will write to Anglian Water in the strongest possible terms to inform them that the situation is becoming worse and that action is urgently needed. The Clerk will also point out that if it is not resolved, the PC will contact Environmental Health.

**Dog Fouling:** DS raised the issue of dog fouling occurring in The Street. All dog walkers are requested to collect their dog's waste as this is a health risk.

**Big Switch N Save:** GB informed the meeting of an initiative called Switch n Save that BDC are part of. Anyone can register an interest and the more that do, the more weight the scheme will have with a potential saving of £170 per year. It takes just 5 minutes to register online. Details can be found at <http://www.breckland.gov.uk/content/brecklands-big-switch-and-save>.

Any queries or comments for the PC can be forwarded to Parish Clerk, Helen Moore.

She can be contacted on 01263 587954, 4 Adams Lane, Corpusty, NR11 6QJ,  
email: [helenmoore1974@yahoo.com](mailto:helenmoore1974@yahoo.com)

*The next meeting will be held on Monday 1<sup>st</sup> April 2013 at 7.30pm in the Village Hall Portacabin – all are very welcome.*

The Annual Parish Council Meeting will be held on Monday 13<sup>th</sup> May at 7pm in the Village Hall Portacabin.

The Annual Parish Meeting will be held on Tuesday 21<sup>st</sup> May at 6.30pm in the Village Hall.

## Proposal for consideration to Bawdeswell Parish Council

### Introduction:

Villagers from *Incredible Edible Bawdeswell* \* request that the Bawdeswell Parish Council adopts a policy to create a Community Orchard.

### Aim:

To enhance a community green space, increase feelings of ownership within the community; grow a legacy area for current and future residents of Bawdeswell. Enhance and utilise space for villagers to enjoy alongside the recreation of the new Village Hall.

### Objective:

To plant a community orchard at the east end of recreation ground. Using experience and guidance from *The East of England Apples and Orchards Project* to plant and grow Norfolk heritage fruit trees.

### Opportunities:

1. Celebrate first planting by linking to 700th year events
2. Create a legacy orchard for future generations
3. Use *England Apples and Orchards Project* for experience, guidance and support with funding
4. Encourage further interest in and use of the Recreation Ground area
5. Involve villagers in planning and growing fruit trees e.g. sponsor/adopt a tree as a memorial for a loved one
6. Involve school pupils in the orchard e.g. help to research varieties, design tree name labels
7. Encourage our young villagers to grow fruit trees and other edible produce, linking the cultivation to the plate, missing out the ready picked in a plastic bag product
8. Grow produce for the community's use
9. Cook and eat fruit at Harvest Supper
10. Create an area of interest and beauty
11. Encourage further involvement between the Master Gardener Project and villagers' own gardens
12. Encourage interest in growing and eating local produce
13. Create a shaded area for summer activities e.g. family picnics, village events
14. Increase interest and involvement through pupil and family interactions with aim of reducing anti-social behaviour.

### Further and future opportunities:

Create raised vegetable beds for elderly/disabled villagers to continue their love of growing, gardening and eating local food.

*\*Incredible Edible Bawdeswell* are villagers who have been inspired by Incredible Edible Todmorden. We share a belief that unloved spaces can grow plants to create areas of beauty and contribute to providing local food for our community.



Would you like to walk to

## The Heath or Village safely?

If you currently use either the Dereham or Billingford Roads for walking to Bawdeswell Heath or The Village, you're almost taking your life in your own hands.

Bawdeswell Parish Council has submitted two proposals to Norfolk County Council to improve the verges on the north side of the Dereham Road and the south side of the Billingford Road to allow safe pedestrian passage. Basically, this is to level/re-grade the surface, thus giving better foot access to The Heath and The Village.

**We are applying for funding but have to find local money as well so are looking for financial pledges from you. Any pledge will be kept in strict confidence.**

If you have any questions, comments  
or wish to pledge, please contact

Alex Kirby – [alexckirby@hotmail.com](mailto:alexckirby@hotmail.com) 01362 688787



## BINTREE BOWLS CLUB

The Bowling Green is situated  
behind Bawdeswell Village Hall

Every Tuesday & Thursday 2.00 - 4.00pm

Everybody, Young, or even Old is very welcome

*For further information contact*

Richard Blyth Tel: 01362 688450

Richard Johnson Tel: 01362 688016

Alan Collier Tel: 01362 688017



**G.A.EGMORE & PARTNERS**  
of Sparham

Coal, Smokeless fuels,  
Pre-packed & Barbecue fuels  
Also parts for Solid Fuel Fires  
Regular Deliveries 5 days a week in  
all areas. Quality, Service, Reliability.



PHONE 01362 688270

Locally based accountancy and  
tax service



Self-Assessment Tax Returns  
Annual Accounts  
BOOK KEEPING  
VAT Returns

Committed to providing a prompt professional  
service at a sensible price. For a free initial  
consultation at a time to suit you contact  
David Pooley ACIB  
Tel/Fax **01603 866542** Mobile **0790 508 6960**  
e-mail: davidpooley@certax.co.uk

**Charles Seaman**

Interior/Exterior Painter and  
Decorator

**Tel: (01362) 688309**

2 Bell Close, Bawdeswell,  
Dereham, NR20 4SL

**ABILITY**  
**DRIVER TRAINING**  
YOUR LOCAL DRIVING INSTRUCTOR

EXCELLENT PASS RATE

**LYNG (01603) 870276**

[www.abilitydrivertraining.co.uk](http://www.abilitydrivertraining.co.uk)



**Vaughan Lapwood ADI**

*Patient and Friendly  
Driving Tuition*

**Tel: 01362 690049**

**Mobile 07831 102311**



Rose Cottage Therapies  
Tel: 01362 688664  
[www.rosecottage therapies.co.uk](http://www.rosecottage therapies.co.uk)



**Reflexology - Aromatherapy - Reiki**  
**RoseTone FRT® (Facial Rejuvenation)**

Sue Whiting IEB.CThA, RASA (18yrs experience)  
Natural skincare range—available online, phone  
orders or by appointment from Bawdeswell  
Also teaching CThA accredited courses in:-  
Reiki and RoseTone FRT®

TELEPHONE BAWDESWELL  
688211

**J.A.BAKER**

**FAMILY BUTCHER**  
BAWDESWELL, Norfolk

ORDERS TAKEN FOR ALL DEEP-FREEZE  
MEATS



Lilwall's Farm Pork  
**HOG ROASTS**  
*for your function*

**50 - 500 people**

Ring for a quotation

**(01362) 688098 07867 987787**

*Farm Reared British Pigs*

**[www.hogroastnorfolk.com](http://www.hogroastnorfolk.com)**



## Bawdeswell Table Tennis Club

**Table Tennis – EVERY MONDAY EVENING**

Our table tennis evenings on Monday nights continue to be successful and lots of fun. We have some new members, young and old, all different levels of experience.. Depending on how many of us are there each week, we will try to play some singles games, as well as doubles. It is great fun. If anyone is interested, do come along and join us.

Entrance fee is **£2 adult and £1 under 16** to cover the cost of hiring the hall. Anyone under 16 must be accompanied by an adult.

For more information please contact Janet on (01362) 688749.

**BRIDGE CLUB** The JayCee Bridge Club holds weekly sessions at both Foxley and Bawdeswell Village Halls. We meet at Foxley Village Hall every Tuesday evening at 7.15pm. for a 7.30p.m. start and at Bawdeswell Village Hall every Friday afternoon at 2.15p.m. for a 2.30p.m. start. For information (or to confirm a session is to take place) contact Roger Fryatt on 01362 688627 or Patsy Catchpole on 01362 688352.



**SHORT MAT BOWLS**  
**Foxley Village Hall**

*Every Monday and Friday evening.*

**The RPM Record Club** meets on the **first Tuesday** of the month at **Elsing Village Hall, 8pm**. The evening features a theme and also a mystery album chosen by a club member. There is tea and a guest biscuit and entry is by a suggested £1 donation to cover costs.

Information from Tim Chipping 01362 637331

**All Welcome...**  
**Wensum Valley Hotel**

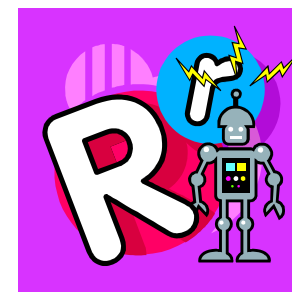
<p><b>Forthcoming Events</b></p> <p><b>March</b> Mothering Sunday Carvery Sunday 10th 12.30pm - 3.00pm from £18.95pp</p> <p>Quiz night Friday 22nd £6.50 per person max 8 per team</p> <p>Live Music Carvery Sunday 24th - 6.00pm till late Free Entry</p> <p><b>April</b> PGA Pro AM - 29th Enter a team to play with a professional</p> <p>PGA Tournament 30th-2nd May Come and watch for free</p>	<p>Bar &amp; Restaurant meals served all day, every day</p> <p>Carvery served Sunday 12.30 - 3.00pm with Pianist Friday/Saturday 6.30-9.30pm</p> <p>Wedding Receptions &amp; Civil Ceremonies</p> <p>Function &amp; Conference Rooms</p> <p>No membership joining fees</p> <p>Fully Equipped Gym, Swimming Pool, Sauna, Steam Room &amp; Jacuzzi</p> <p>Golf Memberships, Green Fees &amp; Society Days</p> <p>Big Screen TV, Snooker &amp; Pool</p>	   
--	--	---

Beech Avenue, Taverham, Norwich, Norfolk, NR8 6HP  
**Telephone: 01603 261012** **Fax: 01603 261664**  
[www.wensumvalleyhotel.co.uk](http://www.wensumvalleyhotel.co.uk) [enqs@wensumvalleyhotel.co.uk](mailto:enqs@wensumvalleyhotel.co.uk)

<p><b>Paul Downs</b></p> <p>for all your woodworking requirements –</p> <p>carpentry, joinery, cabinet making</p> <p>and bespoke furniture, doors and windows.</p> <p>Telephone: 07765957386 or 01953 883868</p> <p><a href="http://www.good-with-wood.co.uk">www.good-with-wood.co.uk</a></p>	
--	--

<p><b>RAVENCROFT TREE SERVICES</b></p> 	<p><b>TREE CONTRACTING AND CONSULTANCY</b></p> <p>Contact Richard Ravencroft BSc.(Hons) Arb. Tel: 01362 684291 <a href="http://www.ravencrofttrees.co.uk">www.ravencrofttrees.co.uk</a></p>
--	---

Are you ready for some fun?



Come and join the  
**RAZZAMATAZZ ROBOTS**

This year's **Summer Club** will be at  
Sparham from 29<sup>th</sup> July to 2<sup>nd</sup> August

Open to everyone in  
current Year 1 to Year 6

*Look out for more details  
in the next few weeks*

Our theme this year is  
all about the Creation

**Norfolk Stairlifts**  
www.norfolkstairlifts.co.uk

**2 Years Warranty**

**Straight & Curved Stairlifts**

*Largest Working*  
**DEMONSTRATION**  
**DISPLAY In Norfolk**

Stairlift broken down? Call Now

**Tel: 01953 850004**

FREE NO OBLIGATION SURVEY  
Unit 10, Ironside Way, Hingham, Norwich.

**The Hairdressing Council**

Louise Ledbury

Welcomes you to

The Hair Room

2 Saxon Meadows, Bawdeswell

Tuesdays, Wednesdays and

Thursdays 9am – 5pm

Fully qualified in all aspects of

hairdressing

23 years experience

To book an appointment call:

01362 688666

20% off your first appointment

**R. WELLS MEMORIALS**

*Your Independent Memorial Mason*

Memorials in marble, stone and coloured granites

Workshop: 01603 755524

Office: 01603 485691

[www.rwellsmemorials.co.uk](http://www.rwellsmemorials.co.uk)

Unit 8 Sawmill Close, The Street, Felthorpe, NR10 4BH

**For all your Home & Garden Maintenance contact** 01603 871064

**J. D. Home & Garden Services**

*Professional & Reliable Workmanship*

- ❖ Garden Fencing Supplied & Erected
  - ❖ Patio & Paving Laid
- ❖ Sheds Supplied & Erected
- ❖ Replacement External Doors & Windows
- ❖ Conservatories Supplied & Erected
  - ❖ Floor and Wall Tiling
- ❖ All forms of Domestic Carpentry

No Job Too Small – Free Estimates  
Call Jason Dobbs on 01362 – 688824 or  
07780 – 988628  
www.jdhomeandgarden.com

**Norfolk Trusted Trader**

## THE LOCAL WEATHER by Chris Bell

### A cold, rather cloudy month:



February is on average the coldest month of the year in East Anglia and February 2013 was even colder than normal. The average high temperature at Foxley during February 2013 was 5.7C, with the low temperature averaging 0.7C, both of which were about 1C below the long-term average.

Part of the reason February is such a cold month in Norfolk is due to the very cold sea temperatures surrounding our coastline. Temperatures in the North Sea at the end of February were below 4C in some places near the coast of Norfolk, which is about 2-3 degrees below average, and with the predominant wind direction from the northeast at the end of the month, this led to some bitterly cold feeling days.

The highest temperature recorded in February was 9.8C on the 4<sup>th</sup> of the month, ahead of a front that brought colder air and a spell of wintry showers that lasted from the 5-10<sup>th</sup>. These wintry showers were heavy enough at times to allow for 1-2cm of snow to lay at times between the 5-8<sup>th</sup>.

The coldest night of the month occurred on the 18<sup>th</sup> into the morning of the 19<sup>th</sup> with a temperature of -3.4C. The temperature dropped below freezing on eight separate nights during the month.

Precipitation was very close to normal with 37.8mm recorded during the month, (compared to the long-term average for February of 38mm) and almost a third of that rain fell on the wettest day of the month, the 14<sup>th</sup>.

Overall, February 2013 will was a fairly uneventful month weather-wise, and has already given way to a colder than average start to March - so spring has definitely not made a quick entrance.

*This weather data is collected by a Davis Vantage Pro 2 weather station located in Foxley. The data can be accessed live on the internet at: [www.stormbell.net/weather](http://www.stormbell.net/weather)*





## 2013 FESTIVAL

12<sup>th</sup>, 13<sup>th</sup>, 14<sup>th</sup> July 10am – 4pm

### Church Flower Festival Celebrating 700 years of recorded Rectors in Bawdeswell

10am – 4pm

*"Bawdeswell through the ages"*

Free Entry. Programmes £2.50 Refreshments available.

If you would like to pay for some flowers to honour someone, living or dead, please make a cheque out to Friends of Bawdeswell Church and hand it to the Treasurer David Shannon who can be contacted on 01362 688111. The names of the remembered persons will be displayed.

**Preview Reception** Thursday evening 11<sup>th</sup> July 7pm . *Ticket event.. £10*

**Festival Players** Saturday 13<sup>th</sup> July Gates open at 6pm, *A Midsummer Night's Dream.*

*Ticket event.. £12.50 in advance, £15 on the gate. Bring a picnic.*

*Proceeds to the Friends of Bawdeswell Church*

Sunday 14<sup>th</sup> July **Service of Thanksgiving** 6pm Bishop of Lynn

### Open Gardens

*Entrance by Programme:*

*£5 allows entry to all the gardens.*

**Village History & Archive Display** - Village Hall *Donations appreciated*

**Children's Treasure Hunt & Adventure Playground**

*Proceeds to the New Village Hall Fund*

Contacts: 01362 688499, 688268 Email: [2013festival@bawdeswell.net](mailto:2013festival@bawdeswell.net)

Latest News on the Festival Website  
[www.bawdeswell2013festival.org.uk](http://www.bawdeswell2013festival.org.uk)

## LEGAL CORNER *by Ruth Collings*

### Power of Attorney

In England, an attorney is someone who can make decisions on your behalf. The document that creates this authority is called a 'Power of Attorney'. They have 'attorneys' in the USA but that seems to be a term equivalent to our 'lawyer'.

Powers of attorney come in two main types. There are those that give authority to someone else to make decisions on your behalf while you have mental capacity and those that are specifically created to keep working if you lose mental capacity. The former power of attorney is often referred to as a general power of attorney or a section 10 power of attorney. This name comes from the specific section of the Powers of Attorney Act 1971 which is their legal basis.

A general power of attorney is usually used for a specific purpose. If you're selling your house and are away on holiday at a crucial point, all is not lost. If you know you're going to be away when the exchange of contracts takes place you can prepare for that by appointing someone reliable as your attorney. When the transaction is ready to go ahead, rather than interrupting your holiday in Paris, your lawyer can confirm the sale of Church Cottage and the purchase of Rose Mansion by calling your attorney instead.

If you are appointed as someone's executor and they die, you may wish to deal with their estate but just not be able to do so at the time. In this circumstance you can appoint an attorney just to deal with the administration of the estate in your place as executor.

I have recently heard a few stories about people who have been executors for a loved-one and appointed an attorney to deal with the administration of the estate. If you appoint someone you know, trust and can rely on to take up your role as executor, you're likely to be doing the right thing. Be very wary though of someone (or an organisation) you don't know from Adam saying they'll take on that responsibility. It's not always very straight forward to get the authority (and paperwork) back from them once given!

In the next edition I'll go into more detail about the powers of attorney that keep going if you lose mental capacity and why they're so useful.

*Ruth Collings is an Associate Solicitor in the Private Client department of Hood Vores & Allwood in Dereham.*

## Wensum Valley Birdwatching Society

Dr Kevin Elsby joined us to talk about 'Spitzbergen – Wildlife at the Top of the World'.



Spitzbergen is the largest and only permanently populated island of the Svalbard archipelago in the Arctic Ocean. The administrative centre and largest settlement is Longyearbyen which was founded on coal mining in 1906. Longyearbyen is a rather bleak town dotted with multi-coloured houses, shops, a supermarket and its own university. It was July - high summer - but the temperature was still near freezing.

The town is surrounded by majestic mountain scenery. We saw the many plants surviving in the few inches of unfrozen ground above the permafrost on the lower stretches like Polar Willows, Arctic Poppies, Hairy Lousewort and Cotton grass. There were birds such as Snow Buntings, Sanderlings, Skuas, Turnstones and Phalaropes, all in the breeding plumages that we don't see in Norfolk. The sheer cliffs hold huge colonies of Little Auks, Black Guillemots and the rarer Brunnich's Guillemots. Glaucous Gulls roamed the cliff faces snatching eggs and swallowing chicks. Together with the Ivory Gull, with its almost translucent plumage, the Glaucous Gull spends a great deal of the time following Polar Bears scavenging scraps. Arctic foxes scoured the cliffs. We saw Bearded Seals and the endemic Reindeer with its huge feet; then a group of huge Walruses lounging on the sea edge quite unperturbed by the scores of cameras clicking away. But now, the star of Svalbard - the Polar Bear. The one animal everyone comes to see. The largest land dwelling carnivore on the planet. Standing over 9 feet at the shoulder, the big males are very dangerous. For safety reasons, the majority of the pictures were taken from inflatable zodiacs. We saw amazing shots of this beast. Kevin's talk gave a great insight into the life in the High Arctic with stunning photography and amusing anecdotes.

Our outdoor meeting took us to several sites – Sandringham, Dersingham Bog and ending at Roydon Common for the raptor roost. We were treated to a very cold wind all day and the birds seemed to feel it as well. A total of 53 birds were seen.

Our next indoor meeting is on Thursday 18<sup>th</sup> April (which date is also our AGM). We meet at Weston Longville Hall for All commencing at 7.30pm. Outdoor meetings are on Sunday 31 March when we will explore The Brecks and Saturday 4 May when we will visit Bayfield.

For more information contact Liz Bridge – publicity@wvbs.gmail.com

## Computers for the Terrified! At Reepham College 4pm-6pm Wed 1<sup>st</sup> May – 26<sup>th</sup> June £50pp for the 8 week course

It is never too late to learn how to use a computer.

Come along to this friendly supportive class where you will be able to work at your own pace. Learn how to get the most from your computer.

Suitable for **absolute** beginners or for those who have a little experience and want to progress. The class will be tailored to meet individual needs.



## Garden Design Thursday 2<sup>nd</sup> May – 27<sup>th</sup> June 7pm-9pm at Reepham College £65 per person

'Your garden -by design'

The course aims to provide those wanting to change or develop their garden with information, advice, support and skills in developing and delivering their own plans. A range of books will be available for reference and information/ hand outs given on other sources of advice etc. The course uses a mixture of presentation, group discussion, case studies/ exercises and a garden visit.



Reepham Learning Community 01603 308133(term time)

Sandie Athow 07796 698127 (other times)

Email – [RLC@reephamhigh.com](mailto:RLC@reephamhigh.com)

For further details of our other courses, please visit

[www.reephamlearningcommunity.co.uk](http://www.reephamlearningcommunity.co.uk)



## ELSING EVENTS

Easter Craft Market at Elsing Village Hall  
([www.elsingvillagehall.co.uk](http://www.elsingvillagehall.co.uk))

on  
Saturday April 6th 2013, 10.00 - 12.00  
Come browse & buy!

Plants, Arts & Crafts, Greeting Cards, Textiles, Smocking, Paintings,  
Ceramics & Handmade Walking Sticks (with demo)  
Great Refreshments, Bacon Rolls...and our latest introduction Toasties!

Following the success of last year's  
**Elsing Village Dog Show**

we will be holding another one  
on

Saturday June 1st, 11.00-4.00  
in Jacks Meadow & the Village Hall

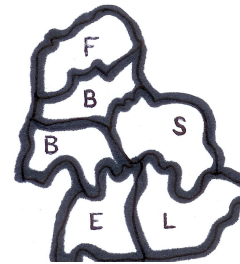
**Agility Display**

Crufts Judge, Trophies, Rosettes, Raffle,  
Real Ale Bar & Refreshments

Entry £1.50 per class, Phone Genine 01362 638542 for more details or to book

**MEGSON**, the husband and wife duo of Stu and Debbie Hanna, will be in concert at Elsing Village Hall on Saturday 20th April 2013, one date of their extensive UK spring tour. Nominated three times for the BBC Radio 2 Folk Awards, they draw heavily on their Tees-side heritage to create a unique brand of acoustic based music, a mix of lush vocal harmonies and driving guitars and mandolins. They have been described in the press as "The most original duo on the British folk scene", "Simply brilliant" and by FRoots Magazine who simply said, "If you don't like the music here, then you have a problem." **Tickets are on sale now, reserved by telephoning 01362 637331 or from Sounds Music, Nunns Way, Dereham (closed Mondays) priced £10 in advance (they will be £12.50 on the door if indeed there are any left by April). Doors 8.00pm, Bar with real ale. Visit [www.megsonmusic.co.uk](http://www.megsonmusic.co.uk) for more information.**

## Benefice News and Events



### **Food, glorious food!**

A big thank you to the children in Willow Class at Lyng School for making such delicious blueberry muffins for Mothering Sunday. They were much enjoyed (and not just by the mums!). They were given out at the service instead of posies, because they really were the work of the children, whilst delicate little posies tend not to be.

### **Food, glorious food 2**

A big thank you to Steve Knight at Kinnertons for their generous gift of Easter Eggs for the Easter congregations in the benefice. Delicious. Very meaningful to us, and locally sourced!

### **Food, glorious food 3**

Thank you to the gentlemen at the men's breakfast who sponsored the mothering Sunday Muffins, as well as another charity.

### **Food, glorious food 4**

At the Lent Deanery Evensong in Gt Witchingham on 10<sup>th</sup> March, representatives of the Mid Norfolk Food-bank gave a presentation. They are giving out significantly more in Dereham but making few deliveries to rural areas. If there is anyone with a food-bank voucher who needs a lift to collect food boxes from the food-bank, please call the Rector (01603 872381) in confidence.

### **Everyone Learning**

#### **8 April Diocesan House - Child Protection Training - no fee**

It is hoped that everyone working with children in the Benefice will be able to attend one of these sessions. Details from Liz Dawes 01603 882354

#### **20 April All Saints Church Shipdham - Core skills for children's work - £15**

Details from Liz Dawes 01603 882354

#### **26 April Norwich Cathedral - The Market as God - £5**

Talk by Harvey Cox of Harvard Divinity School

Details from Gudrun Warren 01603 218327

More details of these and other forthcoming courses can be found in the *Everyone Learning* booklets which are in each of the churches. *S.T.*

**Women's World Day of Prayer** was held in St. Margaret's Lyng on the 1st. March. We wish to thank Mrs Jean Cunnington for her message of how a simple act of kindness to new neighbours with cups of coffee have led to a very good friendship, to Jean sharing her faith and the lady coming to Church. I thank all the ladies for reading and Pearl Lipman for the lovely refreshments. The collection for different charity's was £102 thank-you for this wonderful amount. Next Years will be in Bawdeswell. Theme Steams in the desert from Egypt. *Margaret Keeler*



## Progress on the bells at St Thomas' Foxley

Much progress has been made since January. All the bells are down and away. The Tenor was badly cracked and has now been repaired and back at the bell foundry for tuning after a trip to Newmarket for welding. We have strengthened the bell chamber floor with a new oak beam with new floor boards. So we can actually stand on the floor to continue the repair work. The old floor was in a dangerous state. However, we could then inspect the 1801 frame more closely and found much rot in two corners, which was only visible after all the accumulated rubbish had been cleared out. That meant we needed to install two huge girders to support the frame. These are now in with the necessary approvals and structural analysis work done. The additional work also meant we had to extend the Faculty for the bell project, for which we are awaiting the approval from the Chancellor. In the meantime and despite the cold we make progress. Then we discovered that the No 2 bell had a casting flaw from 1755 which had caused the head of the bell to crack. That bell is now away for repair. So we hope that there are not too many problems that lie ahead, but we have incurred additional costs of some £4500 that we did not expect. We have also lime-washed the tower base and that looks a lot better. Hopefully we will get all the bells back and up in late April.

My thanks go to the continued support and encouragement we have received from the Archdeacon, the PCC, Nicky Mears, various local individuals and volunteers and the Norwich bell adviser. The volunteer effort has saved us about £17000 to date over the course of the project. More Foxley Bell mice were created and sold to raise funds of £500, and we received a welcome donation of £50 from the Foxley Bowls club.

*Tony Rushbrook*

## Bawdeswell's Bell

We are not as lucky as Foxley to have an historic bell tower. When our church was built in 1953, a second-hand bell with a piece missing out of it was acquired and holes drilled in the top of it and bolted to a steel beam in the tower, not hung as a bell should be hung. The result has been years of listening to a very solid "bong" every time it has been rung. The steel beam also twists alarmingly when the bell is struck and it is a wonder that the tower has not cracked. The tower of our medieval church collapsed!

In February of this year a digital bell system was installed by the renowned clockmakers Smith of Derby. So far only the hourly clock chimes have been tried. The bell now reverberates with harmonics as a bell should. We are sorry that some people have complained of the change and hate it, but the majority of the feedback has been more positive. The makers have told us the deep tone for the clock chime is embedded in the processor, because on English bells it is generally the tenor bell providing the strike.

The system is also able to ring peals of bells and we will make samples of these available to weddings and other festive occasions like Easter Sunday, if requested.

Any further feedback to [magazine@bawdeswell.net](mailto:magazine@bawdeswell.net) would be welcome.

*Robin Taylor*

## From the Rector

Dear Everybody, hello again.

So we have a new Pope. The white smoke announced it. Men in various uniforms, ranging for ordinary to odd, immediately started to parade in St Peter's Square. There was a delay, longer than the one scripted. And then the name of the new Pope was announced. The crowd was silent, with an inaudible "Hunh?"... "Franciscum?"

The Pope has chosen the name Francis I. One slightly ill-informed commentator implied that it was because of his love of animals. No, rather, St Francis lived in holy poverty and had a mission to build up the church. Preaching to the birds? At the moment, it's for the birds. Let's have not too much pomp, some simplicity, spirituality.

The Pope has chosen a name to show what he wants the future to be. Like everybody who rises to new heights, his past is also gone through with a fine-tooth comb. His statements about the Falklands, as well as his possible links to the Argentine Junta, are turned over again and again. It's the same with Justin Welby, the new Archbishop of Canterbury, especially at the time of his enthronement. A book about his earlier life is already on sale. What were his successes, his failures, his challenges?

I think it's quite natural for this to happen. As I get older, I find myself thinking about my childhood a lot more. When I was a brash stripling of merely forty, I thought it strange of the elderly to think about the past so much. Now I'm on the other side of the hill, I see it more clearly. We want to know who we are, who we have been, where we come from. We can still make plans for the future; but *why* do these plans come from this person? The clue is in the past.

Increasingly, with the internet, people contact me, as a church representative, wanting answers to their genealogical questions. They are mapping themselves. With wisdom, and knowledge of oneself, comes curiosity. *Why* do I tend to act – or function – in this particular way? Is it history, or my God-given nature, or my genes, or just me?

God bless you      David Head

The F.L.E.B.B.S. Benefice  
Rector: Te Revd David Head Tel: 01603 872381  
Email: david@davidhead.plus.com

Date	07/04	14/04	21/04	28/04
Season	The Second Sunday of Easter	The Third Sunday of Easter	The Fourth Sunday of Easter	The Fifth Sunday of Easter
<b>Foxley</b>	09.00 HC <b>Oliver Folkard</b>		10.30 HC <b>DH</b>	18.30 EP
<b>Lyng</b>	9.00 HC <b>DH</b>		17.00 EP <b>DH</b>	10.30 W&P <b>CW</b>
<b>Elsing</b>	10.30 HC <b>Oliver Folkard</b>		10.30 W&P <b>CW</b>	09.00 HC <b>Peter Halls</b>
<b>Bawdeswell</b>	10.30 HC <b>DH</b>	10.30 OMS <b>DH</b>	10.30 GiG  18.30 Evensong DH	10.30 WP <b>CW</b>
<b>Bylaugh</b>		9.00 HC PB <b>DH</b>		9.00 MP <b>CW</b>
<b>Sparham</b>	10.30 <b>OASIS</b>		09.00 HC <b>DH</b>	10.30 HC <b>Peter Halls</b>

Thursdays: Holy Communion at Sparham 9.30am  
Evening Prayer at Bawdeswell 6pm